



## Bilgola Plateau, 20 York Terrace

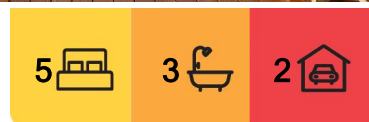
Resort Style Home, Wide Ocean Outlook, Pool and Self-Contained Level

Beyond the private facade of this exceptional home lies a remarkable design offering a flexible and resort like lifestyle. Cleverly crafted to enhance light and space, the home is open to its tropical surroundings welcoming delightful sea breezes and natural sunlight with wide views across the Ocean, Newport Beach and Newport reef. Cleverly designed with two levels of separate, self-contained living, enjoy the exclusive seaside terrace overlooking an azure pool with the twinkling Pacific Ocean set as the perfect backdrop.

- Upstairs level is a full family home with 3 bedrooms, living room, dining, balcony, kitchen and bathroom
- Downstairs is fully self-contained and separately accessed with 2 bedrooms, living room, dining, kitchen
- Resort style pool area with surrounding terrace and sheltered pool cabana (complete with TV!)



**Disclaimer:** All information contained therein is gathered from relevant third parties sources. We cannot guarantee or give any warranty about the information provided. Interested parties must rely solely on their own enquiries.



**For Sale**  
Contact Agent

**View**  
[ljhooker.com.au/VTXF58](http://ljhooker.com.au/VTXF58)

**Contact**  
**Peter Robinson**  
0401 219 077  
[peter.robinson@ljhooker.com.au](mailto:peter.robinson@ljhooker.com.au)  
**Angus Abrahams**  
0488 007 236  
[angus.abrahams@ljhavalon.com.au](mailto:angus.abrahams@ljhavalon.com.au)

**LJ Hooker Avalon Beach**  
(02) 9973 2999



- Enjoy incredible sunrises with wide ocean and beach views from all levels of the home
- A haven of natural light and privacy with subtropical, private manicured grounds including level grassed terrace
- Wide-open living spaces with superb flow
- Immaculate kitchens on both levels, stone bench tops, modern appliances
- Beautifully appointed bathrooms. Large walk in laundry on main level.
- Private separate access to the lower level residence
- Double garage, gas fire place, plantation shutters

Surrounded by pristine beaches and green spaces and only a short walk to local shops and schools, this is the ideal family location and ultimate lifestyle decision.

## More About this Property

<b>Property ID</b>	VTXF58
<b>Property Type</b>	House
<b>Land Area</b>	524.8 m <sup>2</sup>

### Peter Robinson 0401 219 077

Principal - Independent Contractor | [peter.robinson@ljhooker.com.au](mailto:peter.robinson@ljhooker.com.au)

### Angus Abrahams 0488 007 236

Licensed Real Estate Agent | [angus.abrahams@ljhavalon.com.au](mailto:angus.abrahams@ljhavalon.com.au)

### LJ Hooker Avalon Beach (02) 9973 2999

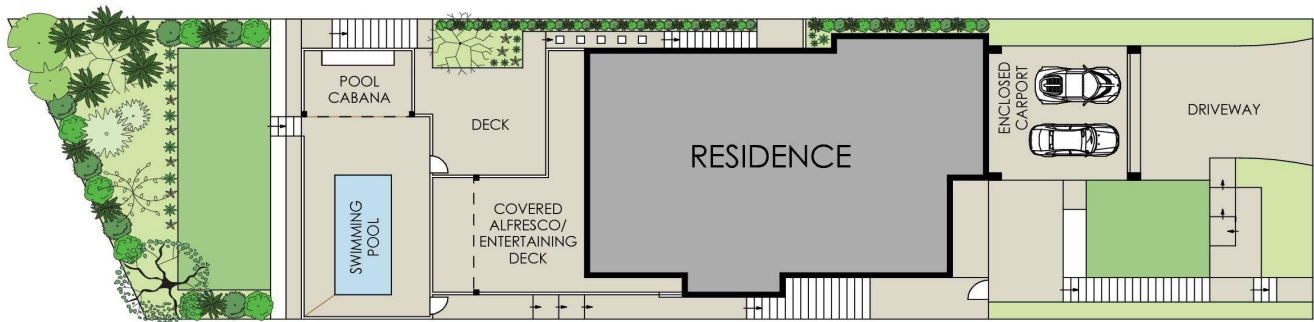
64 Old Barrenjoey Road, AVALON BEACH NSW 2107

[avalonbeach@ljhooker.com.au](mailto:avalonbeach@ljhooker.com.au) | [avalonbeach@ljhooker.com.au](mailto:avalonbeach@ljhooker.com.au)

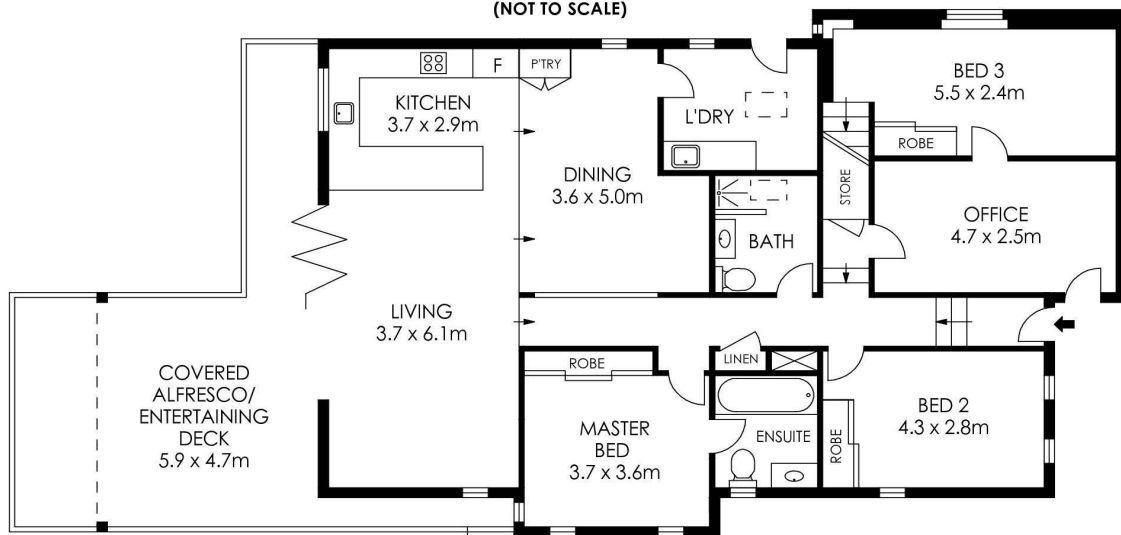


**Disclaimer:** All information contained therein is gathered from relevant third parties sources. We cannot guarantee or give any warranty about the information provided. Interested parties must rely solely on their own enquiries.

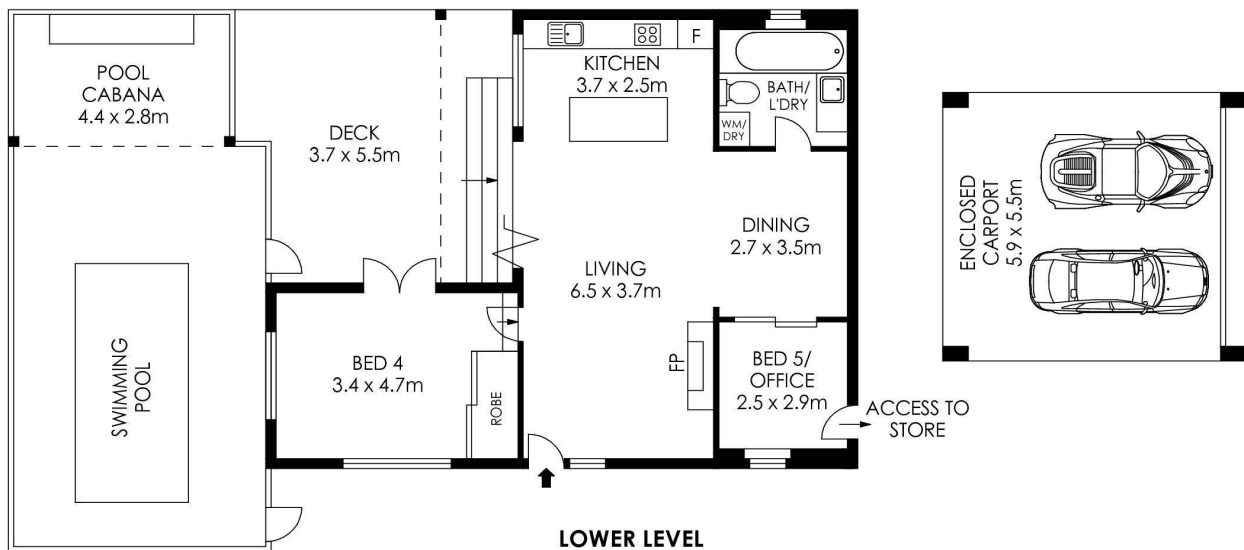
**LJ Hooker Avalon Beach**  
**(02) 9973 2999**



**SITE PLAN**  
(NOT TO SCALE)



**ENTRY LEVEL**



**LOWER LEVEL**

APPROX. INTERNAL AREA = 210 m<sup>2</sup>  
 APPROX. EXTERNAL AREA = 149 m<sup>2</sup>  
 TOTAL = 359 m<sup>2</sup>  
 LAND SIZE = 524.8 m<sup>2</sup>

PLANS SHOWN ONLY INDICATIVE OF LAYOUT. DIMENSIONS ARE APPROXIMATE.



**20 York Crescent, Bilgola Plateau**

**LJ Hooker**

**LJ Hooker**

**LJ Hooker Avalon Beach**  
 (02) 9973 2999

**Disclaimer:** All information contained therein is gathered from relevant third parties sources.  
 We cannot guarantee or give any warranty about the information provided. Interested parties must rely solely on their own enquiries.