



170 Plateau Road, Bilgola Plateau

Bespoke Architect-Designed Retreat with Panoramic Pittwater Views

With shimmering Pittwater views stretching from Bayview to Church Point and Scotland Island, this European-inspired, architect designed four bedroom sanctuary achieves a perfect balance of character, refinement and coastal connection. Vaulted ceilings with exposed rafters crown sunlit interiors, while organic textures and timber flooring add natural, grounded warmth. Renovated just eight years ago, it reveals a fluid, expansive floor plan. A custom reading bench frames the water outlook, while two adaptable studios provide space for creative pursuits or Airbnb stays. Open living and dining areas extend to a covered deck and generous lawn with thriving veggie gardens. Set on a rare level block in a welcoming Bilgola community, moments from shops, schools, beaches and express city transport, this is an elevated family retreat immersed in nature.

Features include:

- oArchitect-designed four bedroom sanctuary in Bilgola Plateau
- oGenerous rare level block with sweeping views across Pittwater
- oVaulted ceilings, exposed rafters and cathedral-style proportions

4 3 8

FOR SALE

EOI Guide: \$3,900,000

AGENTS

Reade Havenstein
0413 859 742
rhavenstein@ljhnewport.com.au

Elizabeth Charlton
0457 177 060
lcharlton@ljhnewport.com.au

AGENCY

LJ Hooker Newport
(02) 9979 1111

All information contained therein is gathered from relevant third parties sources.
We cannot guarantee or give any warranty about the information provided.
Interested parties must rely solely on their own enquiries.

LJ Hooker

- oFlexible open-plan layout with rumpus, office and study spaces
- oWoodburning fireplace, custom cabinetry and organic textures
- oCustom reading bench perfectly framing the shimmering outlook
- oGourmet kitchen featuring lIve steam oven and Qasair rangehood
- oIntegrated appliances and antique benchtop add unique character
- oFour bright bedrooms feature built-in robes and timber flooring
- oMaster bedroom features ensuite, timber floors, opens to terrace
- oThree stylish bathrooms with dual vanity, quality timber detailing
- oAdditional downstairs powder bay offers convenience and ease
- oDedicated laundry includes linen storage and under floor heating
- oSeparate studio with kitchenette and bathroom, ideal for Airbnb
- oSecond rear studio space offers space for retreat or home office
- oCovered alfresco deck overlooking veggie gardens and level lawn
- oBackyard offers ample space for potential swimming pool (STCA)
- oPatio with outdoor shower, cubby house, water tanks, irrigation
- oDouble automatic garage with storage, ample off-street parking
- oMoments to the local IGA , cafes, shops, schools, beaches and express city transport

Disclaimer:

All information contained herewith, including but not limited to the general property description, price and the address, is provided to LJ Hooker Newport by third parties. We have obtained this information from sources we believe to be reliable; however, we cannot guarantee its accuracy. The information contained herewith should not be relied upon and you should make your own enquiries and seek advice in respect of this property or any property on this website.

MORE DETAILS

Property ID	17H5G5W
Property Type	House
Land Area	949 m2

Reade Havenstein 0413 859 742

Sales Executive | rhavenstein@ljhnewport.com.au

Elizabeth Charlton 0457 177 060

Executive Assistant | lcharlton@ljhnewport.com.au

LJ Hooker Newport (02) 9979 1111

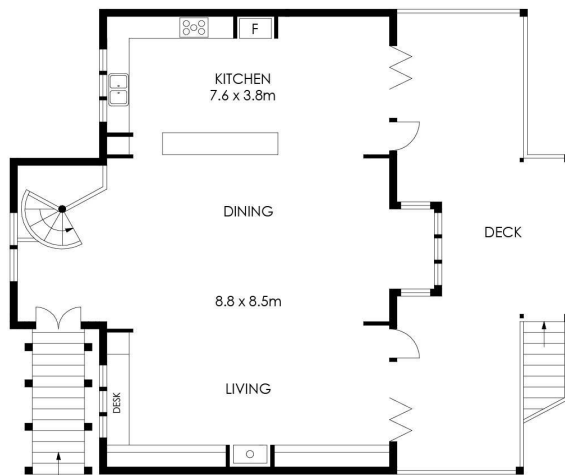
303 Barrenjoey Road, NEWPORT NSW 2106

newport.ljhooker.com.au | newport@ljhnewport.com.au

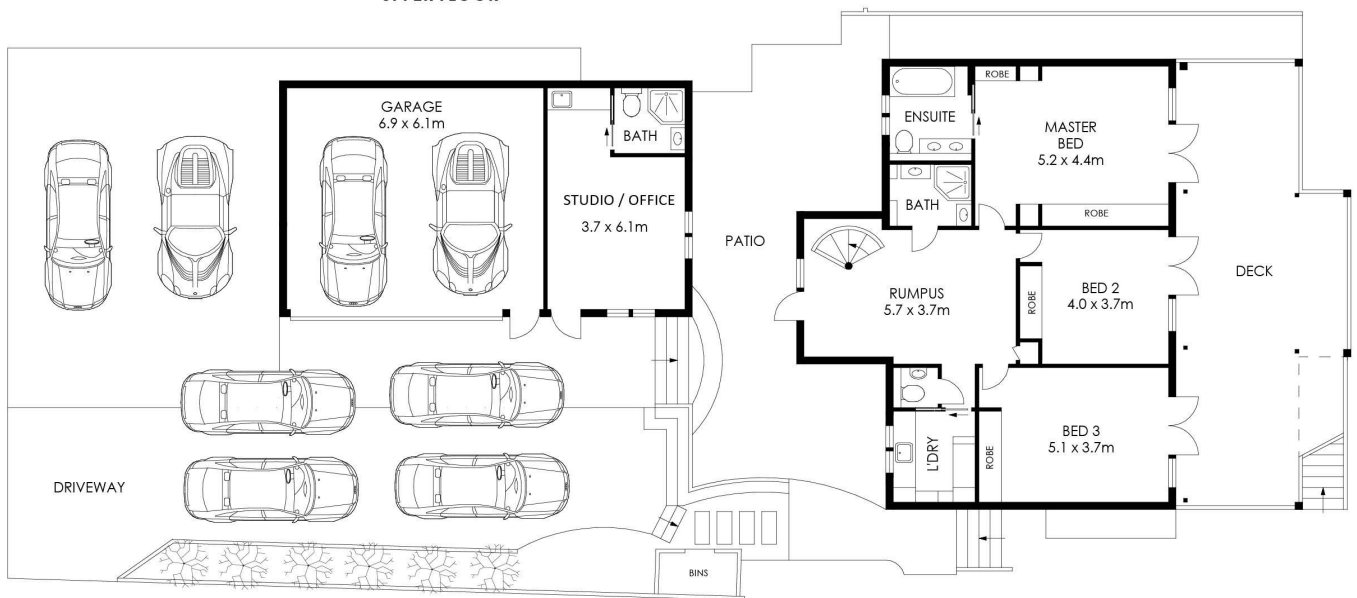




SITE PLAN
(NOT TO SCALE)



UPPER FLOOR



GROUND FLOOR

APPROX. INTERNAL AREA = 202 m²
 APPROX. EXTERNAL AREA = 97 m²
 TOTAL = 299 m²
 LAND SIZE = 949 m²

PLANS SHOWN ONLY INDICATIVE OF LAYOUT. DIMENSIONS ARE APPROXIMATE.



170 Plateau Road, Bilgola Plateau



All information contained therein is gathered from relevant third parties sources.
 We cannot guarantee or give any warranty about the information provided.
 Interested parties must rely solely on their own enquiries.

