

46 The Serpentine, Bilgola Beach

Extraordinary oceanfront setting, one of the finest on Bilgola Beach

Offered for the first time in four decades, this 1960's cottage enjoys a spectacular oceanfront position, taking in unobstructed vistas across the lush green Bilgola Headland to the north, the golden sands of Bilgola Beach to the south and views right down to Manly. It offers a once-in-a-generation opportunity for development on one of the peninsula's most tightly-held beaches. It's also one of the few homes with its own oceanfront pool, while a short walking track in front of the property runs directly to Bilgola Beach.

- Incredible development potential; trading for first time in 40 years
- Magnificent views across Bilgola Headland & Beach, right down to Manly
- Oceanfront pool, concrete and fully tiled, measuring 9.5m x 4.5m
- Tidy electric kitchen, combined living/dining, huge alfresco terrace overlooking the pool and incredible 180 degree ocean views
- Two upper level bedrooms plus study all with ocean views master bedroom with ensuite
- Fully airconditioned plus open gas fireplace
- Direct pathway to Bilgola Beach
- Impressive 708sqm terraced parcel enjoys abundant northern sun

All information contained therein is gathered from relevant third parties sources. We cannot guarantee or give any warranty about the information provided. Interested parties must rely solely on their own enquiries.

3 1 1

FOR SALE
Contact Agent

AGENTS

Angus Abrahams
0488 007 236
angus.abrahams@ljhavalon.com.au

Jonathan Gosselin
0488 011 870
jono.gosselin@ljhavalon.com.au

AGENCY

LJ Hooker Avalon Beach
(02) 9973 2999

LJ Hooker

- Rare opportunity; one of Bilgola Beach's finest oceanfront properties

Disclaimer:

All information contained herewith, including but not limited to the general property description, price and the address, is provided to LJ Hooker Avalon Beach by third parties. We have obtained this information from sources we believe to be reliable; however, we cannot guarantee its accuracy. The information contained herewith should not be relied upon and you should make your own enquiries and seek advice in respect of this property or any property on this website.

MORE DETAILS

| | |
|---------------|--------|
| Property ID | WWMF58 |
| Property Type | House |
| Land Area | 712 m2 |

Angus Abrahams 0488 007 236

Licensed Real Estate Agent | angus.abrahams@ljhavalon.com.au

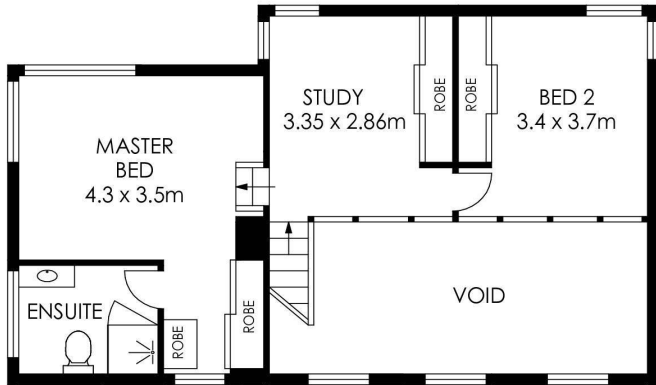
Jonothan Gosselin 0488 011 870

Licensed Real Estate Agent | jono.gosselin@ljhavalon.com.au

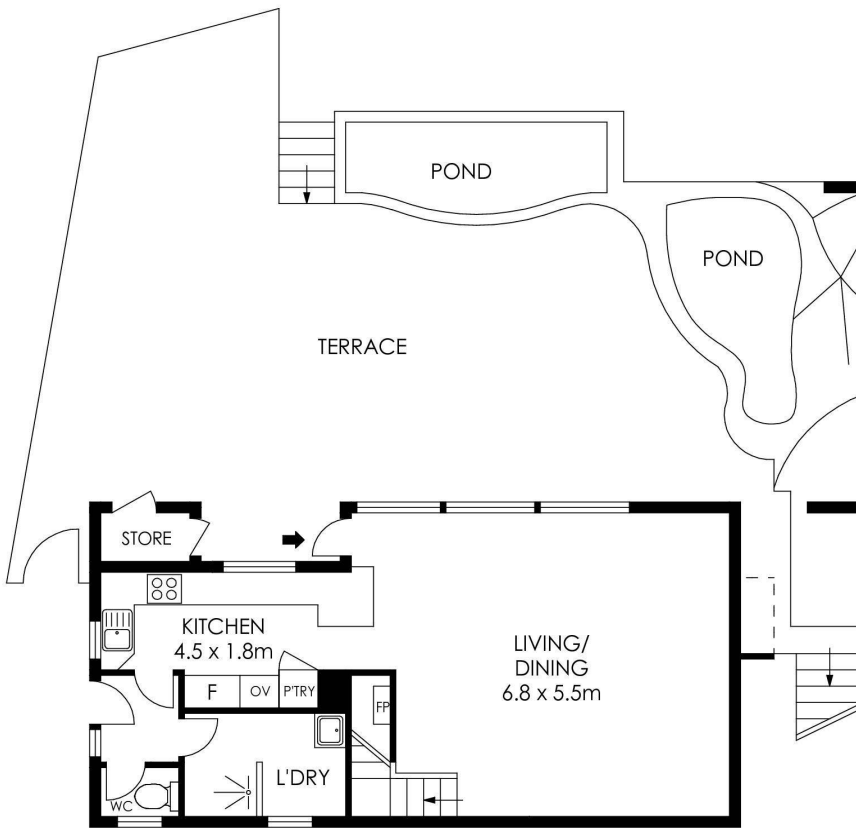
LJ Hooker Avalon Beach (02) 9973 2999

64 Old Barrenjoey Road, AVALON BEACH NSW 2107
avalonbeach.ljhooker.com.au | avalonbeach@ljhooker.com.au

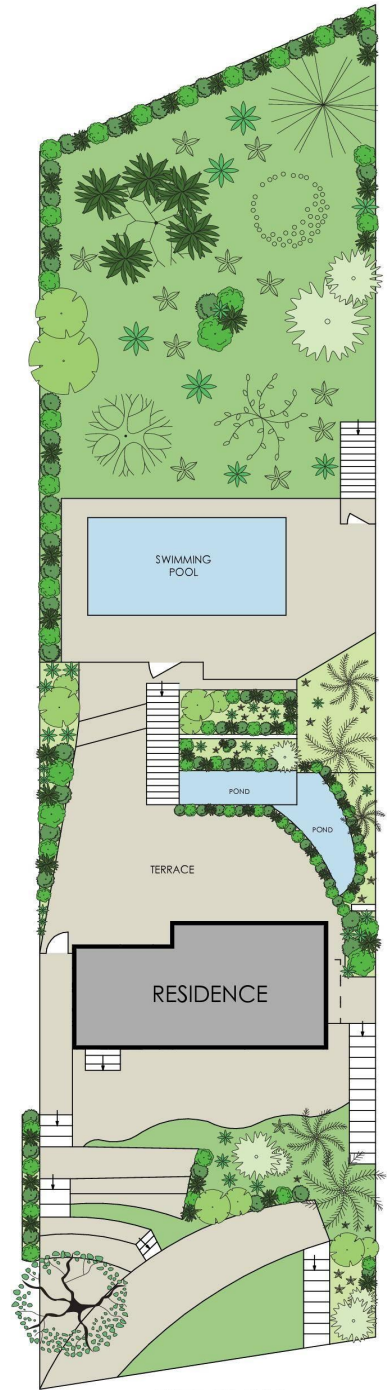




FIRST LEVEL



GROUND LEVEL



**SITE PLAN
(NOT TO SCALE)**

APPROX. INTERNAL AREA = 128 m²
 APPROX. EXTERNAL AREA = 2 m²
 TOTAL = 130 m²
 LAND SIZE = 708 m²

PLANS SHOWN ONLY INDICATIVE OF LAYOUT. DIMENSIONS ARE APPROXIMATE.



46 The Serpentine, Bilgola Beach



All information contained therein is gathered from relevant third parties sources.
 We cannot guarantee or give any warranty about the information provided.
 Interested parties must rely solely on their own enquiries.

