



2B/36 Albyn Street, Bexley

2  1  1 

Beautifully Presented and Affordable Home in a Prime Location

This immaculately presented apartment is located at the rear of a highly sought-after after full-Brick complex and features two spacious bedrooms, both with built-in wardrobes, a modern kitchen with breakfast bar, an updated bathroom with separate bath and shower and a spacious open plan living and dining area which flows out to a private east facing balcony.

The property has been freshly painted with new blinds, light fittings and brand new hybrid timber flooring throughout.

Parking is also provided by a car space at the rear of the complex.

The property is located within close proximity to local shops, schools, parks and public transport and is within a short drive to Westfield shopping in Hurstville.

This is the perfect first time or investment at an affordable price.

FOR SALE
SOLD

AGENTS

Joe Murania
0416 044 267
joe@ljhburwood.com.au

Rong You
0424 433 888
rong@ljhburwood.com.au

AGENCY

LJ Hooker Burwood
(02) 9745 3999

All information contained therein is gathered from relevant third parties sources.
We cannot guarantee or give any warranty about the information provided.
Interested parties must rely solely on their own enquiries.



MORE DETAILS

Property ID 11WNF8R
Property Type Unit
Land Area 71.5 m2

Joe Murania 0416 044 267

Director | Sales Manager | joe@ljhburwood.com.au

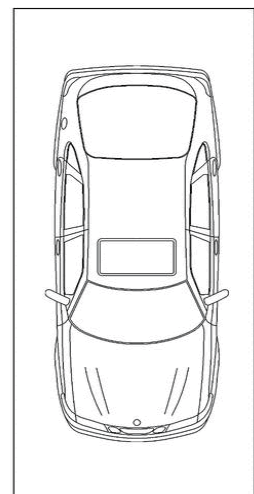
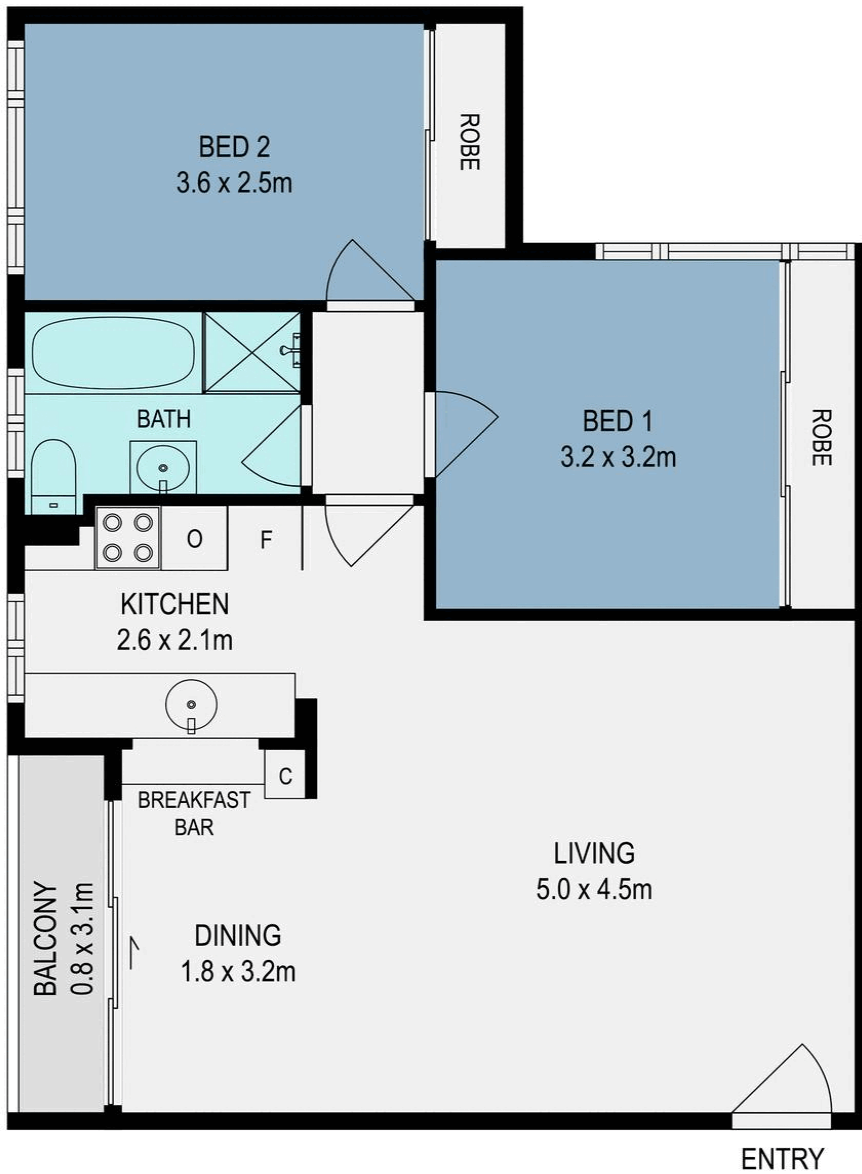
Rong You 0424 433 888

Sales | Licensed Real Estate Agent | rong@ljhburwood.com.au

LJ Hooker Burwood (02) 9745 3999

Shop 2/27-29 Burwood Road, BURWOOD NSW 2134
burwood.ljhooker.com.au | burwood@ljhburwood.com.au





CAR SPACE
(NOT TO SCALE)

2B/36 Albyn Street, BEXLEY



DISCLAIMER: THIS FLOOR PLAN IS INTENDED AS A GUIDE ONLY. IT DOES NOT CONSTITUTE PART OF ANY LEGAL DOCUMENTS. ALL DIMENSIONS ARE APPROXIMATE, ACTUAL MAY VARY. NO LIABILITY ACCEPTED. YOU MUST SEEK ADVICE FROM YOUR SOLICITOR. FLOOR PLAN BY WWW.MCPIXELSAU.COM