



1A Veron Road, Bexley

Updated Brick Home in a Very Peaceful Location

Surrounded by a tranquil leafy outlook and located in a quiet cul-de-sac is this comfortable 3 bedroom residence set on a 455.3m² block and backing onto Bardwell Valley Parklands. The home offers privacy, peaceful living, and an abundance of natural light and will not last long so inspection is a must.

The property offers -

- Three bedrooms all with built-in wardrobes
- An immaculate laminate kitchen
- Updated tidy bathroom
- Lounge room plus the addition of a family room with a wood fireplace
- Oversized laundry with plenty of storage space
- Versatile undercover rear entertaining area overlooking the private yard

Additional features include: Ducted air conditioning, freshly painted, gloss polished floorboards, recently restored and painted roof and under house storage.

Close to a selection of public and private schools, Barwell Valley Golf Club, local shops, eating precincts and a short drive to the Airport,

3 1 0

FOR SALE

Just Listed

VIEW

Sat 21st Feb @ 1:00PM - 1:30PM

AGENTS

Clair Andree-Evarts

0414 944 554

candree-evarts.blacktown@ljhooker.com.au

AGENCY

LJ Hooker Blacktown

(02) 9621 1222

All information contained therein is gathered from relevant third parties sources.
We cannot guarantee or give any warranty about the information provided.
Interested parties must rely solely on their own enquiries.



train station and beaches. This home is ready to move into so call Clair on 0414 944 554 to discuss further.

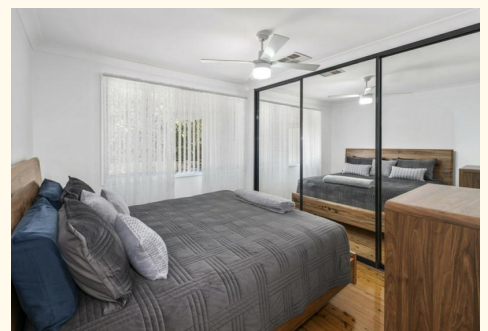
Disclaimer: All information contained therein is gathered from third party sources. We cannot guarantee or give any warranty about the information provided. Interested parties must rely on their own searches.

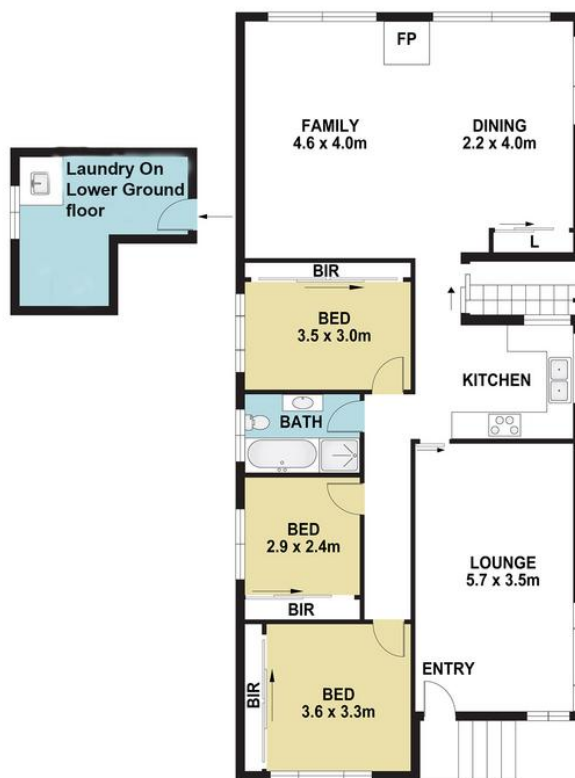
MORE DETAILS

Property ID	2DDJF8K
Property Type	House
Land Area	455.3 m2

Clair Andree-Evarts 0414 944 554
Licensed Real Estate Agent | candree-
evarts.blacktown@ljhooker.com.au

LJ Hooker Blacktown (02) 9621 1222
61 Main Street, BLACKTOWN NSW 2148
blacktown.ljhooker.com.au | blacktown@ljhooker.com.au





0 1 2 3 4 5
Scale in metres. Indicative only. Dimensions are approximate.



1A VERON ROAD, BEXLEY

LJ Hooker