



Bethania, 113/26-32 Radke Road

SOLD FOR SUBURB RECORD BY KAPIL!

SOLD FOR SUBURB RECORD BY KAPIL THAKUR!!

Looking for a low-maintenance, modern home that's both functional and fabulous? This beautiful townhouse has all the features you need for easy living, plus it's perfectly located at the start of the complex - just a stone's throw away from the sparkling pool and BBQ area. Whether you're a first-time buyer, a savvy investor, or looking for a simple lifestyle upgrade, this one's got you covered.

Downstairs Features:

- Open-plan living space with air-conditioning, creating a comfortable environment for both relaxing and entertaining
- Modern kitchen with plenty of storage, including an understairs pantry for all your kitchen essentials
- Guest toilet conveniently located downstairs for easy access



Disclaimer: All information contained therein is gathered from relevant third parties sources. We cannot guarantee or give any warranty about the information provided. Interested parties must rely solely on their own enquiries.

3 2 2 1

For Sale
Offers Over \$599,000

View
ljhooker.com.au/1WH9GRF

Contact
Kapil Thakur
0435 372 246
sales5@ljhbeenleigh.com.au

LJ Hooker Beenleigh
(07) 3807 7900

- Laundry area tucked away, keeping the living space neat and tidy
- Undercover patio area, ideal for alfresco dining or simply relaxing outdoors
- Single car garage with heaps of complex parking right at your doorstep, ensuring plenty of space for you and your guests

Upstairs Features:

- Three spacious bedrooms, each with ceiling fans and built-in robes
- Master bedroom featuring a walk-through robe leading to a private ensuite, your own little retreat

Rental Appraisal:

- \$600 - \$640 per week

Location Perks:

- Just steps from the pool and BBQ area-perfect for weekend relaxation
- Low-maintenance living - more time for you to enjoy life, with minimal upkeep required

Amenities Nearby:

- Bethania Train Station - 850mtrs
- Local Shops & Cafe - 900mtrs
- Bethania Lutheran School - 1.5 km
- Bunnings & Aldi - 3.5 km
- Bethania Lifestyle Centre(Gyms, Cafe, Doctors) - 3.5 km

Meticulously cared for and presented in great condition, this townhouse offers a warm and inviting atmosphere, ready for you to move in and make it your own.

This one won't last long - it's ready and waiting for someone to call it home!



More About this Property

Property ID	1WH9GRF
Property Type	Townhouse
Land Area	133 m2
Including	<ul style="list-style-type: none"> Ensuite Air Conditioning Pool Dishwasher Built-in-Robes Secure Parking Remote Garage

Kapil Thakur 0435 372 246
Sales Consultant | sales5@ljhbeenleigh.com.au

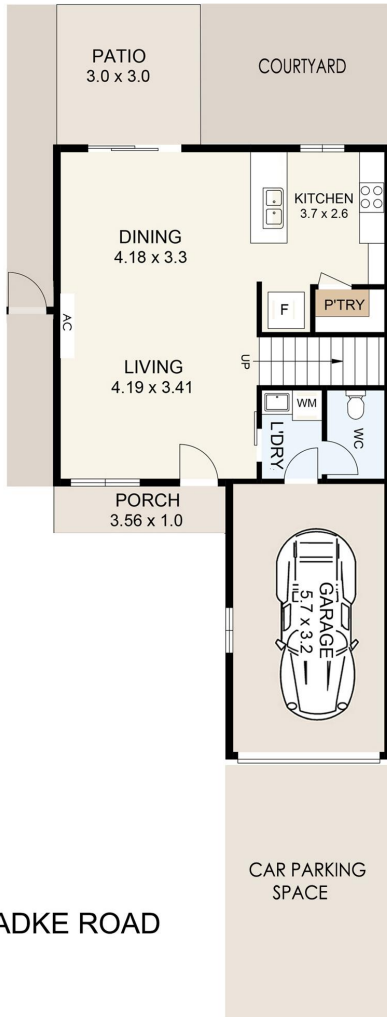
LJ Hooker Beenleigh (07) 3807 7900
14-16 James Street, BEENLEIGH QLD 4207
beenleigh.ljhooker.com.au | bso@ljhbeenleigh.com.au



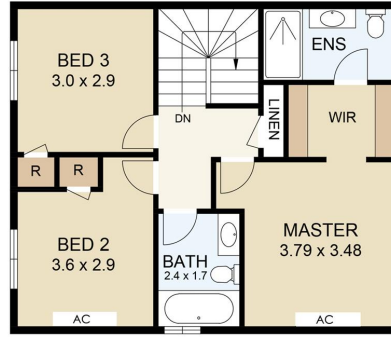
LJ Hooker Beenleigh
(07) 3807 7900

Disclaimer: All information contained therein is gathered from relevant third parties sources. We cannot guarantee or give any warranty about the information provided. Interested parties must rely solely on their own enquiries.

GROUND FLOOR

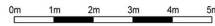


113/26-32 RADKE ROAD



FIRST FLOOR

Floor Plan



SCALE UNIT IS IN METRES

INTERNAL : 121m²
EXTERNAL : 13 m²

All measurements are approximate and for illustration purposes only. It should not be considered 100% accurate. Interested parties should rely on their own enquiries.