



Bethania, 111/26-32 Radke Road

SOLD FOR SUBURB RECORD BY KAPIL THAKUR!

SOLD FOR SUBURB RECORD BY KAPIL THAKUR!

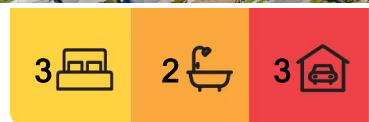
Whether you're a first-time buyer or looking to invest, this beautifully upgraded townhouse offers the ideal mix of modern comfort, convenience, and style. Situated in a well-maintained community, this property boasts the added bonus of air-conditioning in every room, sleek downlights, and plenty of thoughtful touches that make it stand out from the crowd.

Downstairs:

- Air-Conditioned Living Area: Enjoy the spacious, open-plan living area with air-conditioning and stylish downlights, providing the perfect environment for family living or entertaining guests.
- Modern Kitchen: Equipped with contemporary appliances, ample storage, and easy access to the outdoor area, it's a dream for anyone who loves to cook.



Disclaimer: All information contained therein is gathered from relevant third parties sources. We cannot guarantee or give any warranty about the information provided. Interested parties must rely solely on their own enquiries.



For Sale
Offers Over \$595,000

View
l.jhooker.com.au/1WE0GRF

Contact
Kapil Thakur
0435 372 246
sales5@ljhbeenleigh.com.au

LJ Hooker Beenleigh
(07) 3807 7900

- Convenient Guest Toilet: A separate guest toilet downstairs offers added convenience for visitors.
- Internal Laundry: A well-organised internal laundry space keeps everything neat and tidy.
- Private Outdoor Area: Step outside into a low-maintenance backyard complete with a garden shed - perfect for a quiet retreat or gardening.
- Tiled Flooring: The sleek, easy-to-maintain tiles throughout the downstairs area keep your home looking fresh and modern.
- Under-Stairs Storage/Pantry: Extra storage space under the stairs makes it easy to keep your home organised, ideal for pantry items or simply stowing away odds and ends.
- Rental Appraisal - \$550 - \$600 per week

Upstairs:

- Main Bedroom Retreat: The spacious main bedroom features air-conditioning, a walk-through robe, and an ensuite, offering a luxurious, private space to relax.
- Two Additional Bedrooms: Both bedrooms come with ceiling fans, air-conditioning, and built-in robes - perfect for family, guests, or even a home office.
- Family Bathroom: A modern, spacious bathroom perfect for family use.
- Storage Solutions: A handy linen cupboard provides additional storage space to keep things organised.

Community Perks:

- Visitor Parking: Ample parking right at the front, so your guests always have a spot.
- Communal Pool & BBQ Area: Just a short walk away, enjoy the sparkling pool and BBQ area - perfect for socialising or relaxing with family and friends.

Location Highlights: The list of nearby conveniences just goes on... Not to mention being conveniently located to:

- Bethania Train Station & Bethania Waters Shopping Centre - 800mtrs
- Bethania Lutheran Primary School - 1.9km
- Bethania Lifestyle Centre + Bunnings/Aldi - 2.8km, plus numerous sports facilities and shopping options for your convenience.
- Waterford State School - 3.4km
- Plus numerous sports facilities and shopping options. You're also only approximately 10 minutes from the M1, making it easy to head North or South.

This upgraded townhouse provides modern living, convenient amenities, and a great location. Whether you're looking for a first home or a solid investment, this property offers everything you need and more. Don't miss out - it won't last long!



LJ Hooker Beenleigh
(07) 3807 7900

Disclaimer: All information contained therein is gathered from relevant third parties sources. We cannot guarantee or give any warranty about the information provided. Interested parties must rely solely on their own enquiries.

More About this Property

Property ID	1WE0GRF
Property Type	Townhouse
House Size	141 m2
Land Area	133 m2

Kapil Thakur 0435 372 246

Sales Consultant | sales5@ljhbeenleigh.com.au

LJ Hooker Beenleigh (07) 3807 7900

14-16 James Street, BEENLEIGH QLD 4207

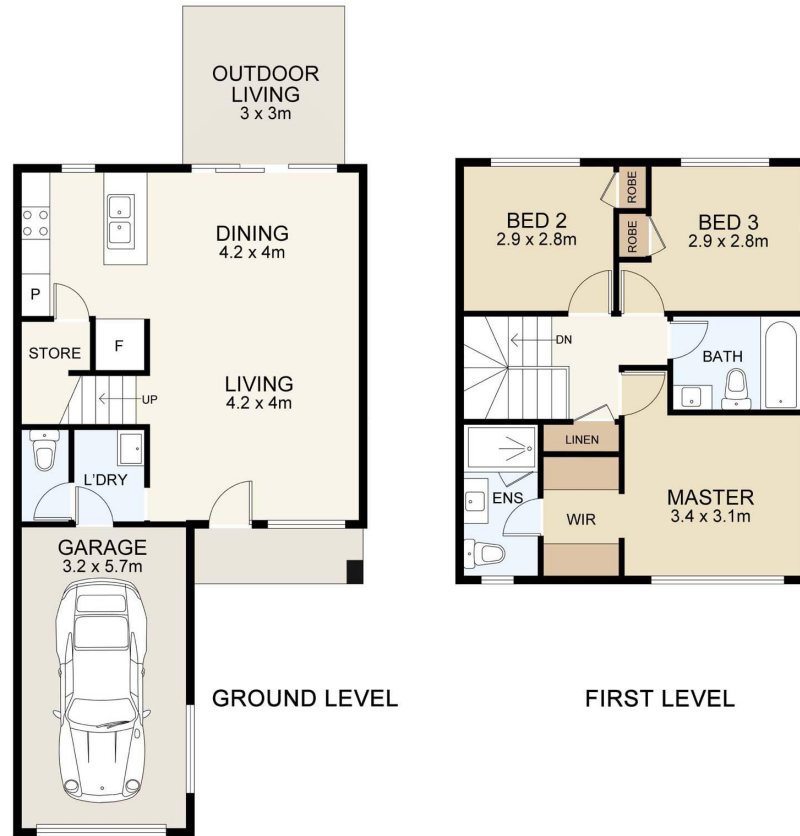
beenleigh.ljhooker.com.au | bso@ljhbeenleigh.com.au



**LJ Hooker Beenleigh
(07) 3807 7900**

Disclaimer: All information contained therein is gathered from relevant third parties sources.

We cannot guarantee or give any warranty about the information provided. Interested parties must rely solely on their own enquiries.



111/26-32 RADKE ROAD

0m 1m 2m 3m 4m 5m SCALE UNIT IS IN METRES

INTERNAL : 112m²
EXTERNAL : 12m²

All measurements are approximate and for illustration purposes only. It should not be considered 100% accurate. Interested parties should rely on their own enquiries.