



Bethania, 48/26-32 Radke Road

UNDER CONTRACT IN 21 HOURS BY KAPIL THAKUR!

UNDER CONTRACT IN 21 HOURS BY KAPIL THAKUR!

Welcome to your dream home - A beautifully designed 3-bedroom, 2-bathroom haven, built in 2022 and presented in immaculate condition. From the moment you step inside, you'll feel the warmth, comfort, and modern charm this home has to offer. Perfect for families, first-home buyers, or downsizers, this low-maintenance home is designed for relaxed living, with light-filled interiors, quality finishes, and a peaceful backyard to enjoy.

Step Inside & Feel at Home

- Spacious open-plan living and dining, filled with natural light and air-conditioned for year-round comfort
- Modern kitchen with quality appliances, plenty of bench space, and ample storage
- Three generous bedrooms, all with ceiling fans and double built-in wardrobes
- Main bedroom retreat featuring a walk-in robe, ensuite, and air conditioning



Disclaimer: All information contained therein is gathered from relevant third parties sources. We cannot guarantee or give any warranty about the information provided. Interested parties must rely solely on their own enquiries.



For Sale
Offers Over \$689,000

View
ljhooker.com.au/1WJRGRF

Contact
Kapil Thakur
0435 372 246
sales5@ljhbeenleigh.com.au

LJ Hooker Beenleigh
(07) 3807 7900

- Stylish main bathroom with a separate shower and bathtub, perfect for relaxing
- Internal laundry in the garage with direct backyard and clothesline access
- Tiles throughout the main living areas, plush carpet in the bedrooms
- Set in a quiet, well-maintained community.

Enjoy Your Outdoor Space

- Beautifully manicured backyard, a private and peaceful space to unwind
- Double garage with internal access, providing secure parking and extra storage
- Just steps from the pool and BBQ area, perfect for weekend relaxation

Prime Location - Everything You Need Nearby

- Bethania Train Station - 850mtrs
- Local Shops & Cafe - 900mtrs
- Bethania Lutheran School - 1.5 km
- Bunnings & Aldi - 3.5 km
- Bethania Lifestyle Centre(Gyms, Cafe, Doctors) - 3.5 km

This modern, move-in-ready home offers the perfect balance of lifestyle and convenience. Whether you're looking for your first home, an investment, or a place to downsize, this one is ready to impress.

Call today to book your inspection-homes like this don't last long!

More About this Property

Property ID	1WJRGRF
Property Type	House
Land Area	350 m2
Including	Ensuite Air Conditioning Dishwasher Built-in-Robes Remote Garage

Kapil Thakur 0435 372 246

Sales Consultant | sales5@ljhbeenleigh.com.au

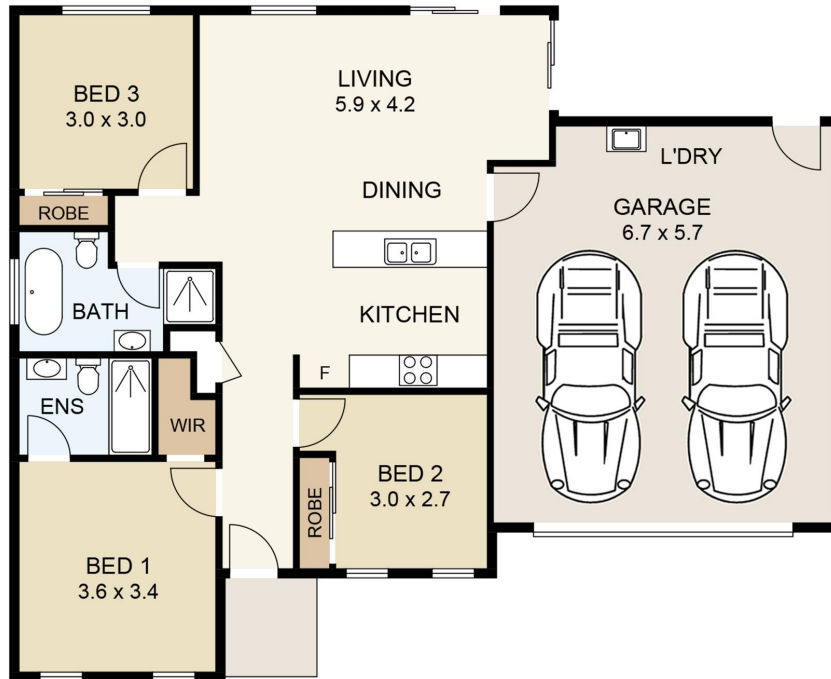
LJ Hooker Beenleigh (07) 3807 7900

14-16 James Street, BEENLEIGH QLD 4207
 beenleigh.ljhooker.com.au | bso@ljhbeenleigh.com.au



LJ Hooker Beenleigh
(07) 3807 7900

Disclaimer: All information contained therein is gathered from relevant third parties sources. We cannot guarantee or give any warranty about the information provided. Interested parties must rely solely on their own enquiries.



Floor Plan

48/26-32 RADKE ROAD



SCALE UNIT IS IN METRES

INTERNAL : 119m²
EXTERNAL : 3m²

All measurements are approximate and for illustration purposes only. It should not be considered 100% accurate. Interested parties should rely on their own enquiries.