
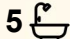



46 Bausch Street, Berwick

Luxury Living Redefined - Brand New Masterpiece in Berwick!

Positioned in the heart of Berwick, 46 Bausch Street presents a stunning brand-new double-storey residence built to the highest standards by Soloman's Constructions. Set on approximately 448sqm, this architecturally striking home showcases a unique curved facade and an impressive balcony that elevates its street presence. Offering 5 spacious bedrooms, 5 luxurious bathrooms, an additional powder room, and 3 separate living zones, this home has been thoughtfully designed to deliver both elegance and functionality for modern family living.

Step inside to discover five generously sized master bedrooms, each complete with its own private ensuite, ensuring ultimate comfort and privacy for every member of the household. A convenient downstairs bedroom is ideal for guests or multi-generational living, complemented by a nearby powder room. The main master suite is a true retreat, featuring an oversized walk-in robe with abundant storage space and a lavish ensuite complete with a bathtub and double vanity with his-and-hers sinks. Every bathroom, including the laundry, is finished with full-height tiling, reflecting the home's premium quality and attention to detail throughout.

5  5  2 

FOR SALE
\$1,930,000 - \$1,980,000

VIEW
By Appointment

AGENTS
Fatima Yazdani
0455 060 836
fatima.yazdani@ljhcasey.com.au

AGENCY
LJ Hooker Hampton Park
(03) 9702 8388

All information contained therein is gathered from relevant third parties sources.
We cannot guarantee or give any warranty about the information provided.
Interested parties must rely solely on their own enquiries.

 **LJ Hooker**

At the heart of the home lies a spectacular kitchen designed for both everyday living and entertaining. Featuring a stunning stone island benchtop, the main kitchen is equipped with high-end appliances including an electric cooktop and gas options, alongside a second fully functional kitchen with a gas stove. With two sinks and two dishwashers, practicality meets luxury. The home also offers a separate dining area, two spacious living zones downstairs, and an additional retreat upstairs. The second living area is a standout, complete with a curved TV unit and a stylish fireplace, creating a warm and inviting atmosphere.

Outdoors, the property continues to impress with a beautifully designed, low-maintenance backyard. Enjoy year-round entertaining under the pergola, which features a built-in BBQ, sink, mini fridge, and ample cabinetry. This thoughtfully curated outdoor space provides all the essentials for hosting family and friends while keeping upkeep minimal.

Located close to Eden Rise Shopping Centre, Casey Central, and Westfield Fountain Gate, as well as Casey Hospital, Federation University, TAFE institutes, quality schools, and public transport options, this home delivers convenience alongside luxury. Don't miss this rare opportunity to secure a one-of-a-kind residence in a sought-after location-contact us today to arrange your private inspection.

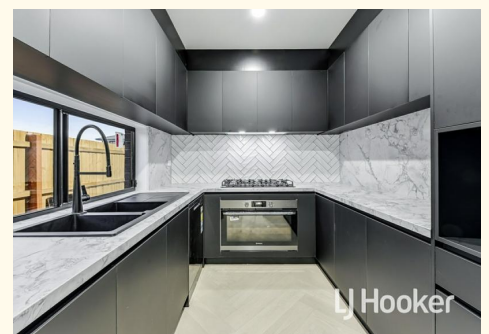
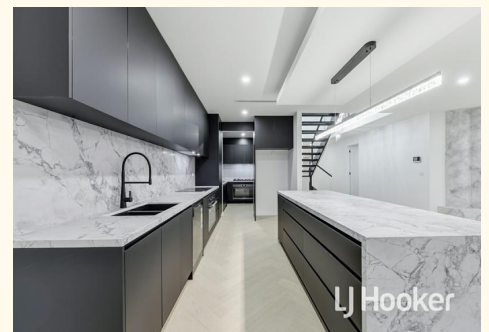
Disclaimer: All information contained herein is gathered from sources we consider to be reliable. However, we cannot guarantee or give any warranty about the information provided, and interested parties must solely rely on their own enquiries.

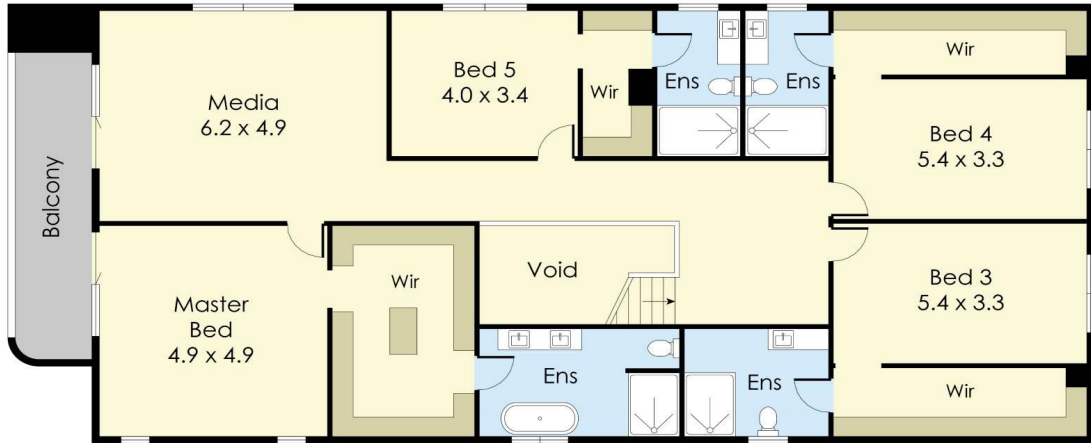
MORE DETAILS

Property ID	47YQQFHE
Property Type	House
Land Area	448 m2
Including	Ducted Cooling Ducted Heating Alarm Dishwasher Alfresco

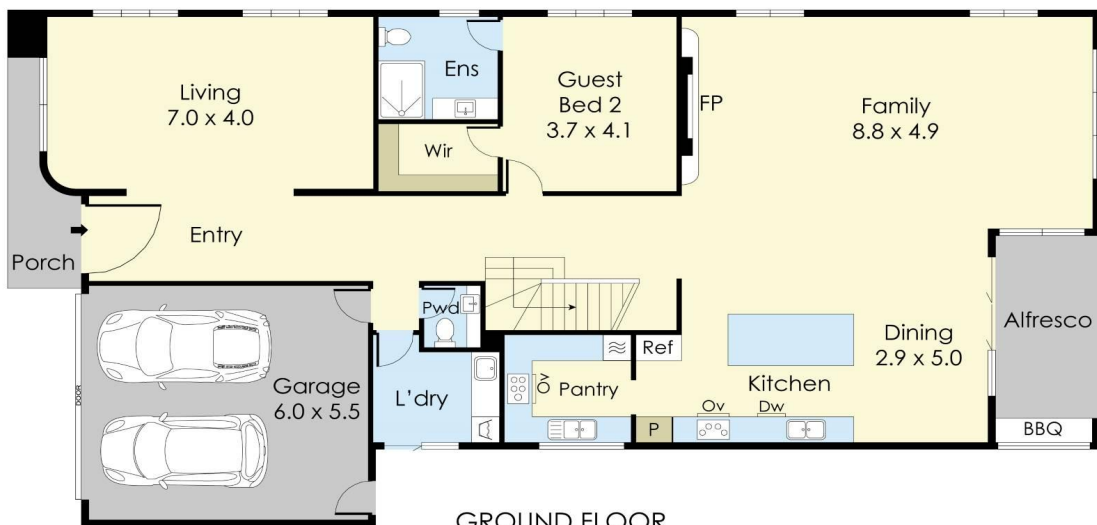
Fatima Yazdani 0455 060 836
Sales Agent | fatima.yazdani@ljhcasey.com.au

LJ Hooker Hampton Park (03) 9702 8388
Shop 20, Hampton Park Shopping Centre, 166 Somerville Road,
HAMPTON PARK VIC 3976
hamptonpark.ljhooker.com.au | john.deo@ljhcasey.com.au

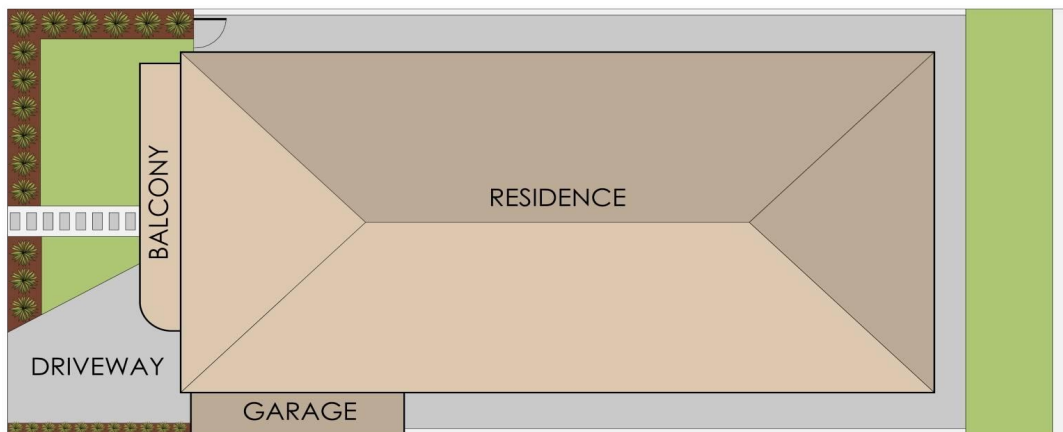




FIRST FLOOR



GROUND FLOOR



46 Bausch Street, Berwick

This floorplan is for illustration purposes only and no warranty is given to its accuracy. Purchasers are advised to carry out their own investigations.