

4 Liege Close, Berwick

## Unrivalled Luxury and Million-Dollar Views in Berwick

Prepare to be captivated by this custom-built Carlisle Homes residence at 4 Liege Close, Berwick, a home that defines modern luxury and spacious living. This magnificent double-story property, located in a highly sought-after neighbourhood, offers an unparalleled lifestyle with breathtaking park and waterfront views.

### Step Inside a World of Elegance

Spanning two levels of pure sophistication, this home has been meticulously designed with an open floor plan that flows effortlessly from one stunning space to the next. At the heart of the home, the gourmet kitchen is a chef's dream. It features a spectacular waterfall stone island bench, a butler's kitchen for discreet preparation, and top-of-the-line appliances.

With five spacious bedrooms and five luxurious ensuites, every member of the family is treated to their own private retreat. The master bedroom is a true sanctuary, boasting a magnificent 'his and hers' walk-in robe that offers abundant storage and a touch of glamour. With five distinct living areas, there's a space for every occasion, from formal entertaining to relaxed family time. A convenient powder room downstairs is perfect for guests.

### Built for Modern Living

This is more than just a beautiful home; it's a smart and sustainable

5 5 2

### FOR SALE

\$1,530,000 - \$1,683,000

### AGENTS

Quinnie Hua  
0401 661 742  
quinnie.hua@ljhooker.com.au

Rohullah Paykari  
0423 649 553  
rpaykari.dandenong@ljhooker.com.au

### AGENCY

LJ Hooker Dandenong City | Berwick  
(03) 9877 9750

All information contained therein is gathered from relevant third parties sources.  
We cannot guarantee or give any warranty about the information provided.  
Interested parties must rely solely on their own enquiries.



one. Equipped with solar panels and three-phase power, it offers efficiency and peace of mind. The property's prime location is directly next to the parkway, providing easy access to outdoor recreation and scenic walks.

#### Premier Education at Your Doorstep

Families will appreciate being in the highly regarded school zone for Kambrya College, a well-known and respected secondary school in the area, as well as other top schools such as Berwick Fields Primary, Nossal High, and Haileybury. This ensures access to quality education without a long commute.

Minutes from Eden Rise Village, Berwick Village, and Fountain Gate, offering a range of shops, cafes, and services

Easy access to the Monash Freeway, Berwick Station, and Casey Hospital, ensuring convenience for work and health care  
Surrounded by lush parks, playgrounds, and walking trails, ideal for outdoor activities and family adventures

Don't miss the opportunity to own this truly exceptional home. It's a statement of style, comfort, and breathtaking natural beauty. Contact us today to arrange a private inspection and experience this exquisite property for yourself.

Disclaimer: All information has been provided to LJ Hooker by third parties. Buyers should make their own enquiries. Images are for illustrative purposes only.

### MORE DETAILS

Property ID	91PHWR
Property Type	House
Land Area	448 m2

#### Quinnie Hua 0401 661 742

Sales specialist | [quinnie.hua@ljhooker.com.au](mailto:quinnie.hua@ljhooker.com.au)

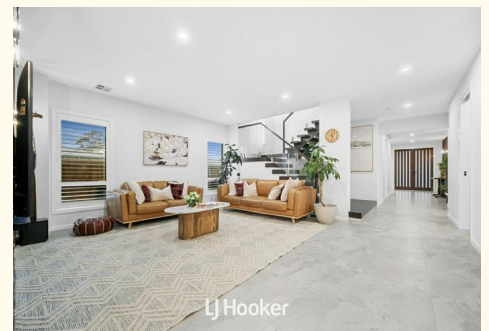
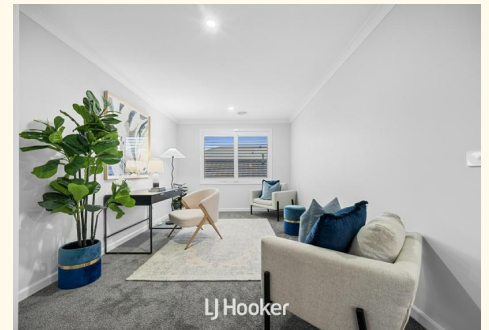
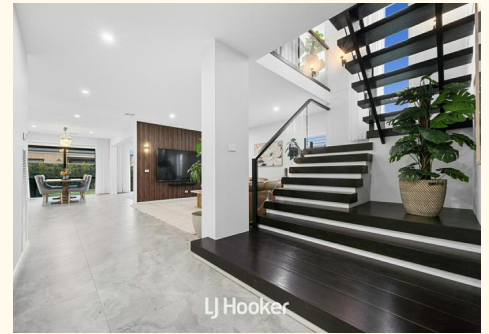
#### Rohullah Paykari 0423 649 553

Owner/ Principal | [rpaykari.dandenong@ljhooker.com.au](mailto:rpaykari.dandenong@ljhooker.com.au)

#### LJ Hooker Dandenong City | Berwick (03) 9877 9750

347 Lonsdale Street, DANDENONG VIC 3175

[dandenong.ljhooker.com.au](http://dandenong.ljhooker.com.au) | [dandenong@ljhooker.com.au](mailto:dandenong@ljhooker.com.au)



## Ground Floor



## First Floor



**LJ Hooker**

# 4 Liege Close, Berwick

\* Dimensions are approximate and for illustrative purposes only