
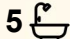



16 Imer Crescent, Berwick

## 5 Master Bedrooms & Grand Double-Height Void - Luxury Living in Prestigious Alira Estate!

Welcome to 16 Imer Crescent, Berwick - a truly exceptional residence where luxury meets thoughtful design in the heart of Alira Estate. This stunning home boasts five expansive bedrooms, each complete with its own private ensuite, offering unparalleled comfort and privacy for every member of the family. A convenient guest master suite is perfectly positioned downstairs, ideal for extended family or visitors, while the remaining four master bedrooms - including the grand main suite - are located upstairs, creating a private sanctuary. A dedicated study space further enhances the home, providing the perfect environment for working or studying from home.

Designed for both grand entertaining and relaxed family living, the home showcases multiple spacious living zones. Downstairs features two substantial living areas, offering flexibility for formal and informal gatherings. The second living area is a true showpiece, highlighted by a breathtaking double-height void adorned with two stunning hanging chandeliers that create a striking sense of space and elegance.

5  5  2 

### FOR SALE

\$1,780,000 - \$1,850,000

### VIEW

Sat 4th Apr @ 12:30PM - 12:50PM

### AGENTS

Fatima Yazdani

0455 060 836

[fatima.yazdani@ljhcasey.com.au](mailto:fatima.yazdani@ljhcasey.com.au)

### AGENCY

LJ Hooker Hampton Park

(03) 9702 8388

All information contained therein is gathered from relevant third parties sources. We cannot guarantee or give any warranty about the information provided. Interested parties must rely solely on their own enquiries.

 **LJ Hooker**

Upstairs, a generous retreat provides an additional living zone, ideal as a family lounge or quiet relaxation space.

At the heart of the home lies a beautifully appointed main kitchen, complemented by a fully equipped second kitchen with its own pantry - perfect for large families or those who love to entertain. Both kitchens feature premium stone benchtops, quality fixed ovens seamlessly integrated into cabinetry, and dishwashers for added convenience. Designed with both functionality and style in mind, these spaces effortlessly cater to everyday living and special occasions alike.

The home's impressive facade delivers immediate street appeal, setting the tone for the quality that lies within. Situated on approximately 513sqm of land, the property also offers a double garage and a beautifully designed backyard. The outdoor space is enhanced louvered pergola with an electronically operated opening and closing system, allowing you to entertain comfortably year-round. Electronic blinds and curtains further elevate the home's modern sophistication and convenience.

Perfectly positioned in a prime pocket of Alira Estate, this home enjoys close proximity to leading amenities including Heritage College, Alira Village, Eden Rise Shopping Centre, Fountain Gate Shopping Centre, medical centres, Federation University, Chisholm TAFE and Casey Hospital. With easy access to public transport and major roads, 16 Imer Crescent delivers the ultimate lifestyle of comfort, convenience and contemporary luxury.

Homes of this calibre, offering five full master bedrooms, a breathtaking double-height void with statement chandeliers, multiple living zones, dual kitchens and premium finishes throughout, are incredibly rare in Berwick - especially in the highly sought-after Alira Estate. Don't miss your opportunity to secure this show-stopping family residence. Contact me today to arrange your private inspection - properties of this quality will not last long!

Disclaimer: All information contained herein is gathered from sources we consider to be reliable. However, we cannot guarantee or give any warranty about the information provided, and interested parties must solely rely on their own enquiries.

## MORE DETAILS

Property ID	47YKUFHE
Property Type	House
Land Area	513 m2

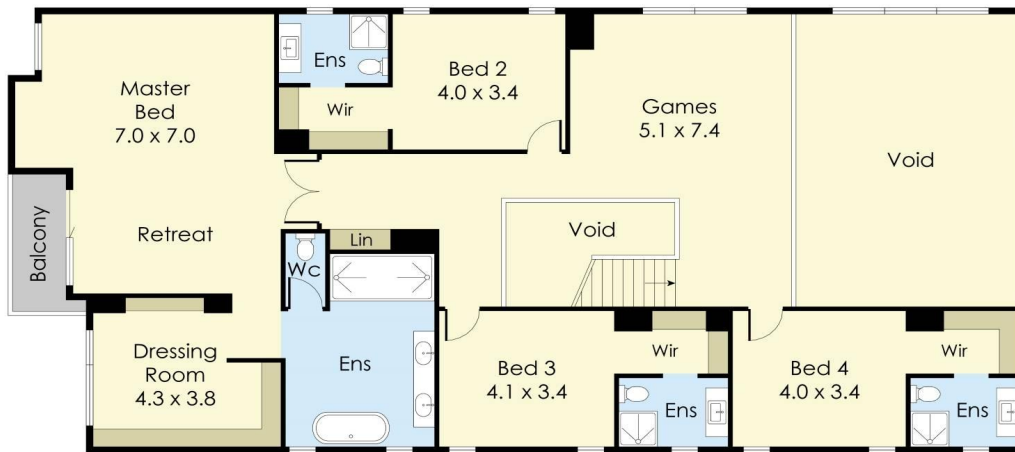
**Fatima Yazdani 0455 060 836**

Sales Agent | [fatima.yazdani@ljhc Casey.com.au](mailto:fatima.yazdani@ljhc Casey.com.au)

**LJ Hooker Hampton Park (03) 9702 8388**

Shop 20, Hampton Park Shopping Centre, 166 Somerville Road,  
HAMPTON PARK VIC 3976  
[hamptonpark.ljhooker.com.au](http://hamptonpark.ljhooker.com.au) | [john.deo@ljhc Casey.com.au](mailto:john.deo@ljhc Casey.com.au)

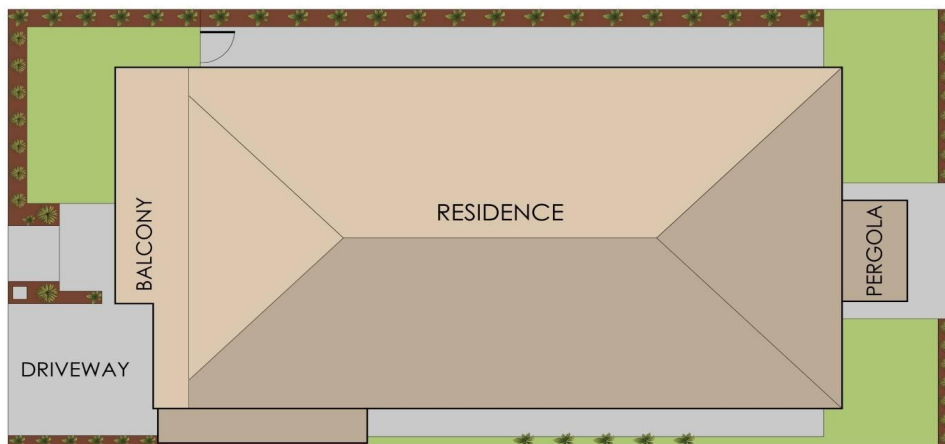




FIRST FLOOR



GROUND FLOOR



## 16 Imer Crescent, Berwick

This floorplan is for illustration purposes only and no warranty is given to its accuracy. Purchasers are advised to carry out their own investigations.