

Berwick, 10 Pinewood Crescent

Exceptional Family Home in Timbarra Estate

Welcome to your ideal family sanctuary, nestled in the coveted Timbarra Estate. Perfectly located just a short stroll from Timbarra P-9 College and Parkhill Plaza Shopping Centre, this home offers unparalleled convenience with easy access to Fountain Gate Shopping Centre, the M1 Freeway, public transport, Chisholm TAFE, Federation University, and Casey Hospital.

One of the property's standout features is its tranquil setting, adjacent to a lush reserve and scenic walking track, creating a serene, semi-rural atmosphere in the heart of Berwick.

Situated on a generous 736m² block, this recently refreshed home features new paint, carpets, and blinds throughout.

Key features include:

* Four spacious bedrooms plus a versatile study that can easily serve as a fifth bedroom.



Disclaimer: All information contained therein is gathered from relevant third parties sources. We cannot guarantee or give any warranty about the information provided. Interested parties must rely solely on their own enquiries.



For Sale
Please Call

View
ljhooker.com.au/1PAUFC9

Contact
Sam Paynter
0439 429 110
spaynter.pakenham@ljhooker.com.au

LJ Hooker Pakenham
(03) 5943 8000

The second bedroom's proximity to the master suite is ideal for families with young children.

- * Private master retreat complete with a walk-in robe and ensuite.
- * Large family bathroom servicing the remaining bedrooms.
- * Open-plan living spaces, including a generous lounge, expansive family room, and meals area with elegant timber flooring.
- * Well-appointed kitchen overlooking the living areas, equipped with an oven, cooktop, and dishwasher.
- * Ducted heating and evaporative cooling for year-round comfort.
- * Sliding doors from the family room open to a vast undercover entertaining area, perfect for gatherings, along with a sun-drenched sundeck for relaxation.
- * Double garage providing secure parking and additional storage space.
- * Additional features include cubby house, a pizza oven, ample lawn space, and a practical garden shed.

Properties of this caliber in such a desirable location are rare. An inspection is highly recommended to fully appreciate everything this exceptional home has to offer.

Please note: All property details listed were current at the time of publishing. Due to extreme buyer demand, some properties may have been sold in the preceding 24 hours. Therefore confirmation of all opens with the listing agent within 24 hours of their scheduled opening is advised.

More About this Property

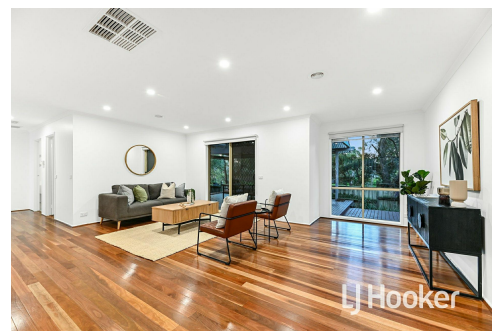
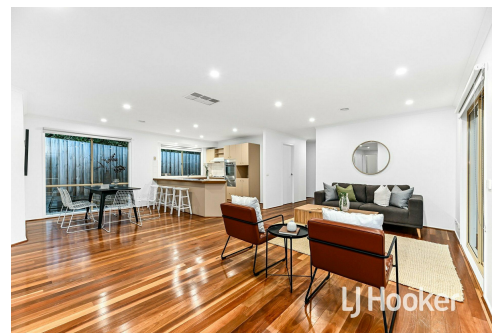
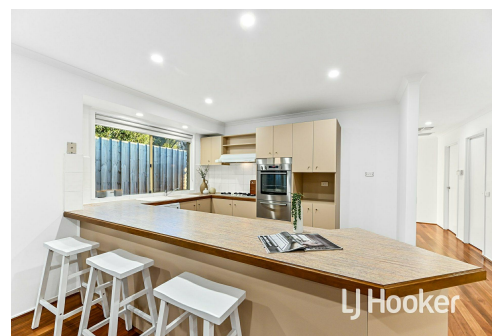
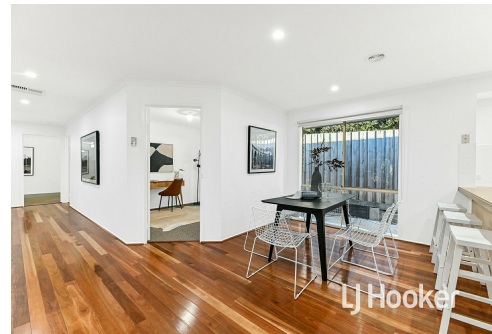
Property ID	1PAUFC9
Property Type	House
Land Area	736 m ²
Including	Ensuite Study Ducted Heating Evaporative Cooling Deck Dishwasher Outdoor Entertaining Secure Parking Fully Fenced

Sam Paynter 0439 429 110

Partner | Sales Specialist | Licensed Estate Agent |
spaynter.pakenham@ljhooker.com.au

LJ Hooker Pakenham (03) 5943 8000

45 John Street, PAKENHAM VIC 3810
pakenham.ljhooker.com.au | pakenham@ljhooker.com.au



Disclaimer: All information contained therein is gathered from relevant third parties sources. We cannot guarantee or give any warranty about the information provided. Interested parties must rely solely on their own enquiries.

LJ Hooker Pakenham
(03) 5943 8000



This drawing is for illustrative purposes only and while every effort has been made to maintain accuracy, prospective purchasers should check all information