

1 Temora Rise, Berwick

## Elevated Elegance in Prestigious North Berwick

Positioned proudly on a prime corner block in the heart of North Berwick, this fully renovated residence delivers an exceptional blend of space, style and lifestyle. With elevated views, refined finishes and a thoughtfully zoned floor plan, this is a home that impresses from every angle.

Designed for both relaxed family living and elegant entertaining, the home offers four generous bedrooms, including a luxurious master suite with walk-in robe and a luxurious ensuite complete with a double shower. The remaining bedrooms are well-proportioned, serviced by a beautifully updated central bathroom and separate WC-ideal for family functionality.

Multiple living zones ensure flexibility for every stage of family life. A formal living room welcomes you at the front of the home, while the expansive family and dining area flows seamlessly from the renovated kitchen-perfect for everyday living and entertaining. The rumpus room, complete with a feature fireplace, provides a warm and inviting space ideal for relaxed evenings, a media room or entertaining guests.

4 🏠 2 🚿 2 🚗

**FOR SALE**  
\$1,250,000 to \$1,375,000

### AGENTS

Quinnie Hua  
0401 661 742  
quinnie.hua@ljhooker.com.au

Rohullah Paykari  
0423 649 553  
rpaykari.dandenong@ljhooker.com.au

### AGENCY

LJ Hooker Dandenong City | Berwick  
(03) 9877 9750

All information contained therein is gathered from relevant third parties sources. We cannot guarantee or give any warranty about the information provided. Interested parties must rely solely on their own enquiries.



Step outside to the alfresco area, perfectly positioned for outdoor dining while enjoying the privacy and outlook afforded by the corner block. The surrounding gardens enhance the sense of space and tranquillity.

Property highlights include:

- Fully renovated throughout with elegant, timeless finishes
- Four spacious bedrooms, master with WIR & ensuite
- Multiple living zones including formal living, family/dining and rumpus with fireplace
- Contemporary kitchen with excellent connection to dining and family zones
- Ducted Air Conditioning and Heating
- Alfresco entertaining and beautifully landscaped surrounds
- Corner block offering enhanced privacy, light and street appeal
- Elevated position with scenic views
- Walking distance to Wilson Botanical Garden

Just minutes to Berwick Village shopping, cafés, schools and amenities

Rarely does a home combine location, layout and luxury so seamlessly. Set in one of Berwick's most desirable pockets, 1 Temora Rise is a standout opportunity for families and discerning buyers seeking a premium lifestyle with long-term value.

#### DISCLAIMERS:

Every reasonable effort has been made to ensure the accuracy of the information provided; however, neither the vendor, agent, nor agency makes any representation or warranty as to its completeness or correctness.

The floor plans provided are for illustrative purposes only and should be treated as such. No liability is accepted for any inaccuracies or omissions in the details or dimensions represented.

As the property may be subject to private inspections, the sale status could change prior to scheduled Open Homes. Prospective buyers are advised to verify the current availability of the property before attending any inspection.

#### MORE DETAILS

Property ID	9GSHWR
Property Type	House
Land Area	691 m2

#### Quinnie Hua 0401 661 742

Sales specialist | [quinnie.hua@ljhooker.com.au](mailto:quinnie.hua@ljhooker.com.au)

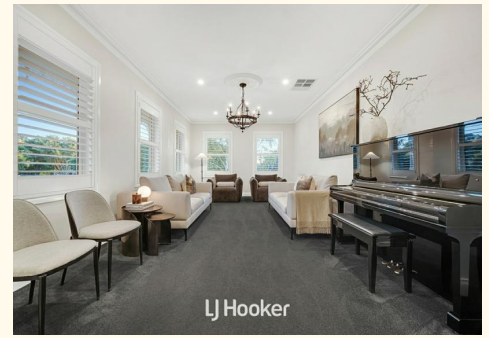
#### Rohullah Paykari 0423 649 553

Owner/ Principal | [rpaykari.dandenong@ljhooker.com.au](mailto:rpaykari.dandenong@ljhooker.com.au)

#### LJ Hooker Dandenong City | Berwick (03) 9877 9750

172 Foster Street, DANDENONG VIC 3175

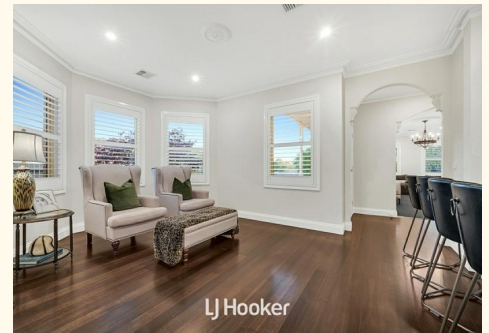
[dandenong.ljhooker.com.au](http://dandenong.ljhooker.com.au) | [dandenong@ljhooker.com.au](mailto:dandenong@ljhooker.com.au)



LJ Hooker



LJ Hooker



LJ Hooker

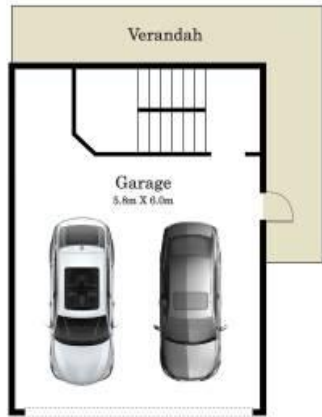


LJ Hooker



LJ Hooker

# Floor Plan



## 1 Temora Rise, Berwick

\* Dimensions are approximate and for illustrative purposes only