



Berrara, 25 Waterhaven Avenue

Affordable Berrara Beauty!

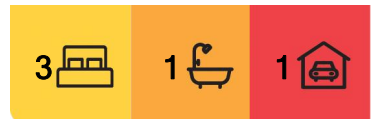
Backing on to Conjola National Park, this sweet home is ideally located to enjoy the best Berrara has to offer when it comes to beaches, surfing, bushwalking, native wildlife and quiet coastal charm.

Set on a large 816m² block backing onto the National Park this fibro cottage consists of:

- Two good-sized bedrooms, both with built-in robes plus a third smaller bedroom or home office
- Combined bathroom/laundry and separate toilet
- Living and dining area with fireplace and reverse cycle split system air conditioning
- Detached garage
- Large 816m² block
- Beautiful bush views where the local wildlife love to play

Set just 300m from Berrara Creek and a little further to Berrara Beach while the National Park is on your doorstep!

This special property is definitely one to view! Call John or Unity today to arrange your



For Sale
Please Call

View
ljhooker.com.au/PJZFAY

Contact
Unity Naismith
0421 715 899
unaismith.sussexinlet@ljhooker.com.au

John Naismith
0475 362 647
jnaismith.sussexinlet@ljhooker.com.au



Disclaimer: All information contained therein is gathered from relevant third parties sources. We cannot guarantee or give any warranty about the information provided. Interested parties must rely solely on their own enquiries.

LJ Hooker Sussex Inlet
(02) 4441 2135

inspection.

More About this Property

Property ID	PJZFAY
Property Type	House
Land Area	816 m ²
Including	Air Conditioning Toilets (1) Fire Place Built-in-Robes Secure Parking Remote Garage

Unity Naismith 0421 715 899

Salesperson | unaismith.sussexinlet@ljhooker.com.au

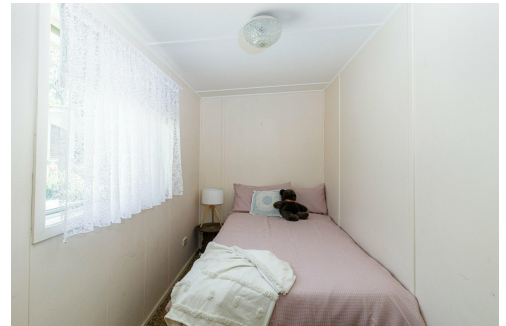
John Naismith 0475 362 647

Salesperson | jnaismith.sussexinlet@ljhooker.com.au

LJ Hooker Sussex Inlet (02) 4441 2135

1/159 Jacobs Drive, SUSSEX INLET NSW 2540

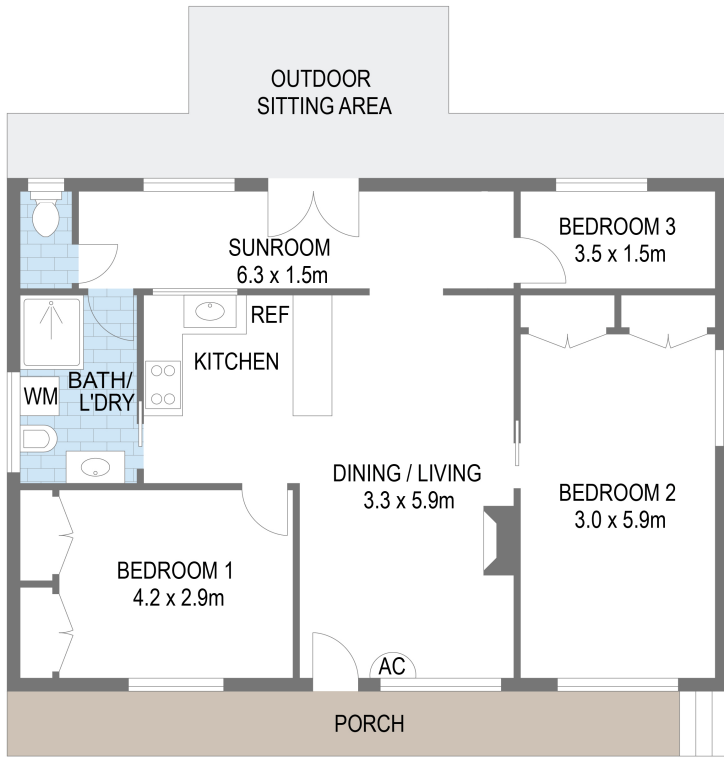
sussexinlet.ljhooker.com.au | sussexinlet@ljhooker.com.au



LJ Hooker Sussex Inlet
(02) 4441 2135

Disclaimer: All information contained therein is gathered from relevant third parties sources.

We cannot guarantee or give any warranty about the information provided. Interested parties must rely solely on their own enquiries.



Scale in meters. Indicative only. Dimensions are approximate. All information contained herein is gathered from sources we believe to be reliable. However we cannot guarantee its accuracy and interested persons should rely on their own enquiries.

25 Waterhaven Avenue, Berrara



LJ Hooker Sussex Inlet
(02) 4441 2135

Disclaimer: All information contained therein is gathered from relevant third parties sources. We cannot guarantee or give any warranty about the information provided. Interested parties must rely solely on their own enquiries.