



Bermagui, 31 Parbery Avenue

Elegance and Style in Bermagui

This three-bedroom home designed by renowned Melbourne architect Neil Clerehan showcases distinctive architectural design, generous spaces, and stunning vistas. Perched high in Bermagui with a northerly orientation, it offers sweeping views of the town, ocean and mountain.

The spacious living area features high, raked ceilings, and the dining area opens onto a deck, perfect for enjoying the magnificent scenery.

The main bedroom includes a generous ensuite and a separate make-up area. On the lower level, you'll find two sizable bedrooms, a second living/rumpus room with study alcove, a bathroom, and a laundry. This ground floor is ideal for guest accommodation or a separate space for teenagers.

The property also includes a detached double garage and ample space in the backyard for entertaining in the private courtyard. Set amidst fully landscaped gardens, this home is truly a gem.

This home is available by private inspection only so call Steve at LJHooker to make a

3

2

2

For Sale
\$1,250,000

View
By Appointment

Contact
Steven Hutcheson
0407 226 603
steven.hutcheson@ljhooker.com.au



LJ Hooker Narooma
(02) 4476 1000

Disclaimer: All information contained therein is gathered from relevant third parties sources. We cannot guarantee or give any warranty about the information provided. Interested parties must rely solely on their own enquiries.

booking today.

More About this Property

Property ID	3KRHMM
Property Type	House
Land Area	627 m ²

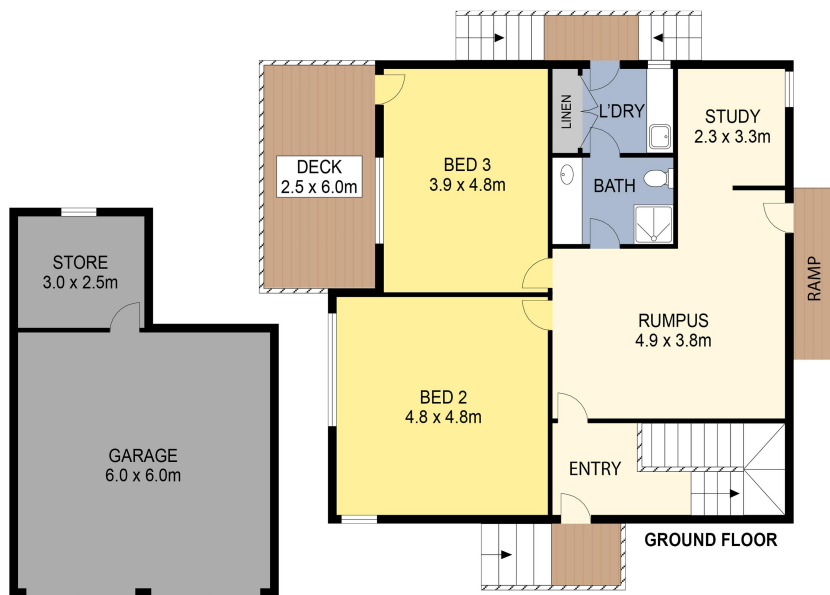
Steven Hutcheson 0407 226 603
Licensed Real Estate Agent | steven.hutcheson@ljhooker.com.au

LJ Hooker Narooma (02) 4476 1000
Shop 6, 4 -6 Noorooma Crescent, NAROOMA NSW 2546
narooma.ljhooker.com.au | narooma@ljhooker.com.au



Disclaimer: All information contained therein is gathered from relevant third parties sources.
We cannot guarantee or give any warranty about the information provided. Interested parties must rely solely on their own enquiries.

LJ Hooker Narooma
(02) 4476 1000



PLANS SHOWN ONLY INDICATIVE OF LAYOUT. DIMENSIONS ARE APPROXIMATE.



31 Parbery Avenue, Bermagui

 **LJ Hooker**

 **LJ Hooker**

LJ Hooker Narooma
(02) 4476 1000

Disclaimer: All information contained therein is gathered from relevant third parties sources. We cannot guarantee or give any warranty about the information provided. Interested parties must rely solely on their own enquiries.