



9A Parbery Avenue, Bermagui

ELEVATED COASTAL LIVING WITH VIEWS TO MONTAGUE ISLAND


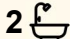

Set high above Bermagui, this substantial three-bedroom duplex enjoys sweeping ocean and harbour views, with uninterrupted sightlines extending to Montague Island and the open Pacific beyond.

The home is generously proportioned and designed for relaxed coastal living, offering three bedrooms, two bathrooms and two separate living areas. Light-filled interiors open to a north-facing deck, perfectly positioned to capture all-day sun, sea breezes and an ever-changing coastal outlook.

From watching the boats return to the harbour to observing the shifting light across the ocean and island, the outlook is a defining feature - elevated, protected and rarely available.

A secure garage with internal access adds everyday practicality, while the home's position places beaches, harbour walks and Bermagui's cafes just moments away.

A refined coastal residence offering space, elevation and one of

3  2  1 

FOR SALE
\$880,000 - \$925,000

VIEW
By Appointment

AGENTS
Paul Griffin
0400 024 300
pgriffin@ljhbega.com.au

AGENCY
LJ Hooker Bega
(02) 6492 4300

All information contained therein is gathered from relevant third parties sources.
We cannot guarantee or give any warranty about the information provided.
Interested parties must rely solely on their own enquiries.

 **LJ Hooker**

Bermagui's most captivating outlooks.

MORE DETAILS

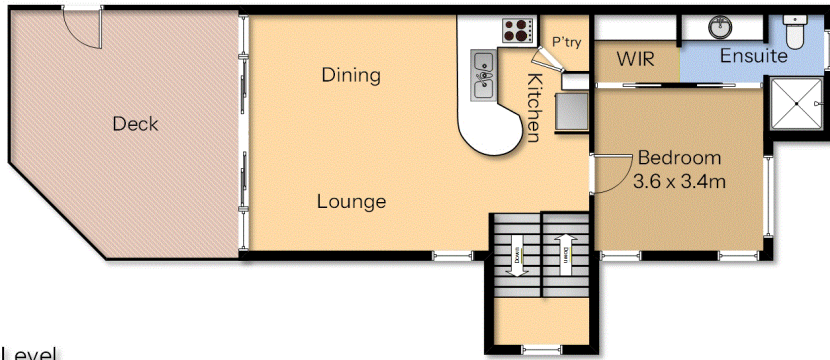
Property ID P1DFGN
Property Type DuplexSemi-detached
Land Area 303 m2

Paul Griffin 0400 024 300
Licensee & Principal | pgriffin@ljhbega.com.au

LJ Hooker Bega (02) 6492 4300
225 Carp Street, BEGA NSW 2550
bega.ljhooker.com.au | office@ljhbega.com.au

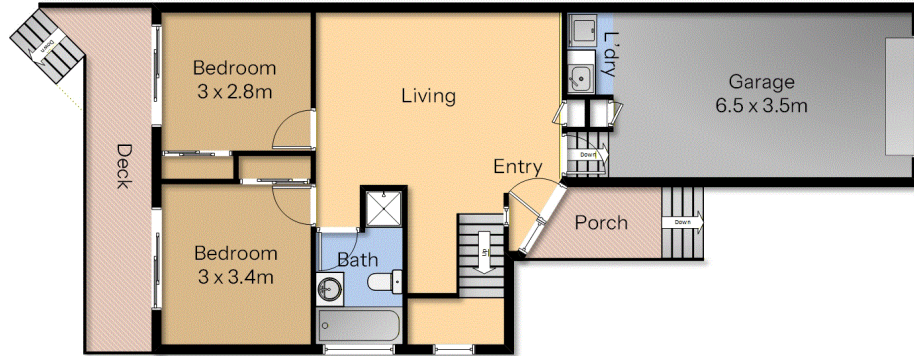


All information contained therein is gathered from relevant third parties sources.
We cannot guarantee or give any warranty about the information provided.
Interested parties must rely solely on their own enquiries.



Upper Level

Lower Level



9A Parbery Ave, Bermagui

Measurements are approximate and should be used as a guide only.