



Sold



4/1196 Albany Highway, Bentley

Modern Comfort Meets Convenience

Perfectly positioned in a leafy, boutique complex with access from a peaceful side street, this beautifully renovated unit offers a blend of style, comfort and everyday convenience.

Ideally located near Bentley Plaza, Westfield Carousel, and Curtin University, it's an excellent opportunity for first-home buyers, downsizers or savvy investors.

Step inside to discover a light-filled interior complemented by quality updates throughout. The private, fenced exclusive use courtyard is a true highlight. It's the perfect spot for relaxing or entertaining friends.

This property offers modern living and convenience at its best.

Property features:

- Direct access via a quiet side street for added privacy and convenience
- Fenced exclusive use courtyard
- Spacious lounge with direct courtyard access
- Ducted reverse cycle air conditioning
- Renovated kitchen with ample storage, dishwasher and gas

2 1 1

FOR SALE
Under Offer

AGENTS

Max Sciacca
0436 806 098
max.sciacca@ljhpxp.com.au

AGENCY

LJ Hooker City Residential
(08) 9325 0700

All information contained therein is gathered from relevant third parties sources. We cannot guarantee or give any warranty about the information provided. Interested parties must rely solely on their own enquiries.



- cooktop
- Fully renovated bathroom with large shower recess and under floor heating
- Master bedroom with mirrored built-in wardrobe
- Generous second bedroom fits a double or queen bed
- Separate external laundry/storage room adjacent to the unit
- Secure lock-up garage for one vehicle plus unreserved visitor parking

Further details

- Council rates: \$1,787.59 p.a.
- Water rates: \$927.84 p.a.
- Strata admin: \$734.37 p/qtr.
- Strata reserve: \$156.25 p/qtr.

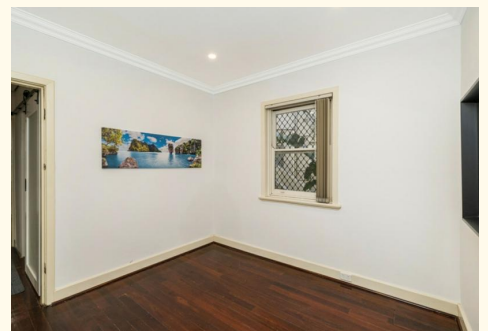
Whether you're starting out, scaling down or adding to your investment portfolio, this low-maintenance home ticks all the boxes.

MORE DETAILS

Property ID	3VAWFGJ
Property Type	Unit
Including	Air Conditioning Toilets (1) Courtyard Dishwasher Outdoor Entertaining Floorboards Built-in-Robes Liveability

Max Sciacca 0436 806 098
Sales Executive | max.sciacca@ljhpxp.com.au

LJ Hooker City Residential (08) 9325 0700
Shop 30, 82 Royal Street, EAST PERTH WA 6004
cityresperth.ljhooker.com.au | hello@ljhpxp.com.au





LJ Hooker

4/1196 Albany Highway, Bentley WA

Whilst every attempt has been made to ensure the accuracy of the floor plan contained here, measurements of doors, windows, rooms and any other items are approximate and no responsibility is taken for any error, omission, or misstatement. This plan is for illustrative purposes only and should be used as such by any prospective purchaser.

All information contained therein is gathered from relevant third parties sources. We cannot guarantee or give any warranty about the information provided. Interested parties must rely solely on their own enquiries.

LJ Hooker