



10A Alexandra Place, Bentley

Private, spacious & packed with value

Proudly presented by Shagun Ahuja from LJ Hooker Victoria Park | Belmont (WA)


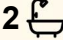
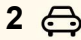
Ready to step into something private, spacious, and full of promise? This Bentley gem might just be the one.

Nestled at the end of a whisper-quiet cul-de-sac, this beautifully presented 3-bedroom, 2-bathroom home offers exceptional privacy and comfort on a generous 561sqm battle-axe block. With its own exclusive driveway, you'll enjoy peace and seclusion without compromising on space or convenience.

Step inside and you're immediately greeted by the master suite, privately tucked to the right. It's complete with a walk-in robe and a well-appointed ensuite - perfect for relaxed mornings and quiet evenings.

To the left, a formal lounge provides a warm and inviting escape - a cosy retreat ideal for reading, relaxing, or hosting guests.

The heart of the home opens into a bright and expansive family living

3  2  2 

FOR SALE
OVER 20 OFFERS RECEIVED

AGENTS

Shagun Ahuja
0439 399 955
shagun@ljhvicpark.com.au

AGENCY

LJ Hooker Victoria Park | Belmont (WA)
(08) 9473 7777

All information contained therein is gathered from relevant third parties sources.
We cannot guarantee or give any warranty about the information provided.
Interested parties must rely solely on their own enquiries.

 **LJ Hooker**

area, where natural light pours in and the layout invites effortless flow from dining to relaxation.

The kitchen is impressively sized, boasting ample cabinetry and extensive bench space - a dream setup for those who love to cook or entertain.

Two additional bedrooms, generously sized and thoughtfully separated, share access to a central bathroom, along with a separate toilet for added functionality.

Step outside to a low-maintenance yard where privacy reigns supreme. A lovely decked area provides the perfect spot for morning coffee, weekend barbecues, or unwinding after a long day - all without the hassle of heavy garden upkeep.

Location Perks You'll Love

- Curtin University - Reach campus in under 5 minutes by car, or hop on a quick bus for an effortless commute.
- Westfield Carousel - A premier shopping destination just moments away. Retail therapy, dining, and entertainment all within easy reach.
- East Vic Park Restaurant Strip - Craving a bite? You're only minutes from one of Perth's most vibrant foodie hubs, overflowing with cafes, bars, and diverse cuisine.
- Perth CBD - The heartbeat of the city lies less than 10km away - whether for work, leisure, or nightlife, you're impressively close without the hustle.

More Features

- 561 sqm Survey strata block (including driveway)
- 2002 Built Home & Approx. 136 sqm internal living area
- Private driveway and low maintenance outdoors
- Double garage & a separate store room
- Freshly painted and new carpets
- Very private and secure
- NO STRATA FEES

Outgoings

- Council Rates - \$2,130 per annum
- Water Rates - \$1,355 per annum

This location brings together education, lifestyle, dining, and convenience in one unbeatable package. Combine that with the privacy and value this home delivers, and you've got an opportunity that's hard to beat. This is not just a home, it's a smart investment into a lifestyle of peace and practicality. Whether you're upsizing, downsizing, or just stepping into the market, 10A Alexandra Place represents incredible value for a standalone home of this calibre.

TO MAKE AN OFFER OR DOWNLOAD A COPY OF THE CONTRACT COPY THIS URL IN A WEB BROWSER AND FOLLOW THE PROMPTS <https://prop.ps/l/ZzfgAL4DX7QC>

Disclaimer: Whilst every care has been taken in the preparation of this advertisement, accuracy cannot be guaranteed. Prospective purchasers should make their own enquiries to satisfy themselves on all pertinent matters. Details listed do not constitute any representation by the Vendor or the agent and are expressly excluded from any contract.

MORE DETAILS

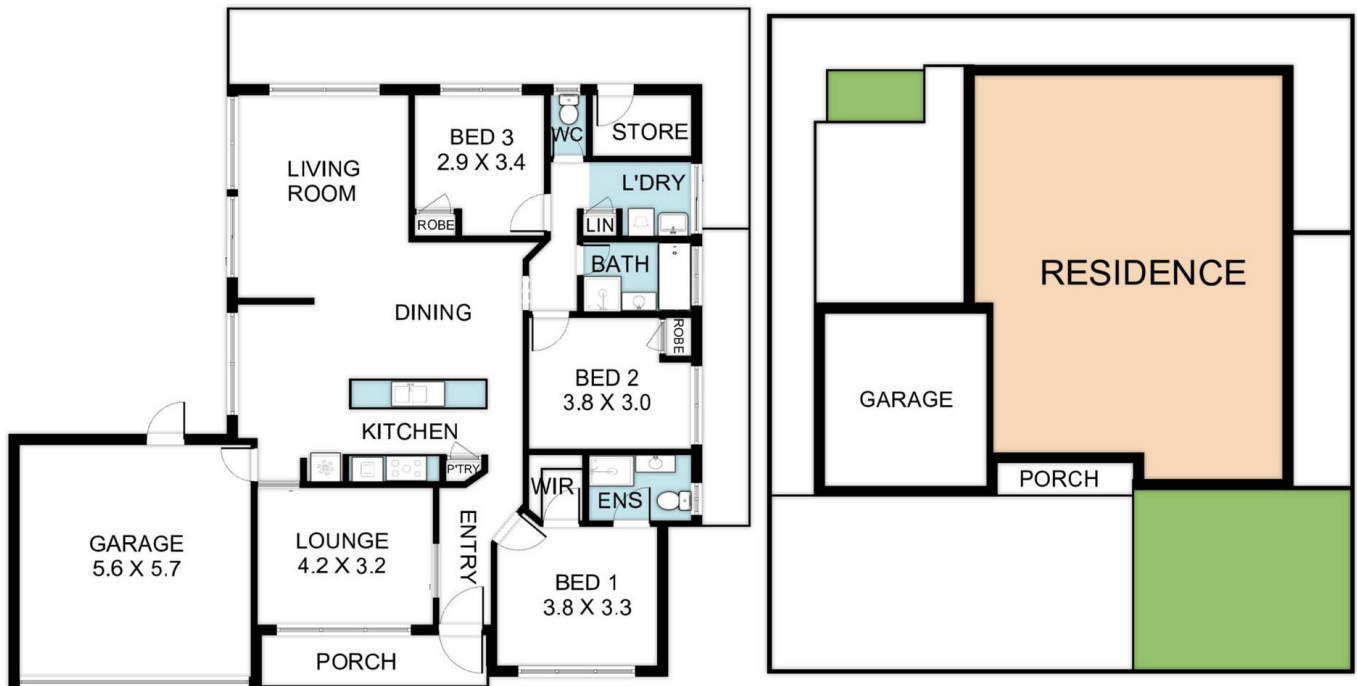
Property ID 5G9JFFB
Property Type House
Land Area 567 m2
Including Ensuite
Built-in-Robes
Remote Garage
Carpeted
Close to Transport

Shagun Ahuja 0439 399 955
Sales Consultant | shagun@ljhvicpark.com.au

LJ Hooker Victoria Park | Belmont (WA) (08) 9473 7777
288 Albany Highway, VICTORIA PARK WA 6100
victoriapark-belmontwa.ljhooker.com.au |
reception@ljhvicpark.com.au



All information contained therein is gathered from relevant third parties sources.
We cannot guarantee or give any warranty about the information provided.
Interested parties must rely solely on their own enquiries.



10A Alexandra Pl, Bentley WA 6102

Whilst every attempt has been made to ensure the accuracy of the floor plan contained here, measurements of doors, Windows, rooms and any other items are approximate and no responsibility is taken for any error, omission, or misstatement. This plan is for illustrative purposes only and should be used as such by any prospective purchaser.