



27 Barcoo Close, Bentley Park

## Elevated Living with Views, Pool and Generous Spaces

Contemporary double storey home elevated in Bentley Park, advantageously positioned at the end of a cul-de-sac to capture panoramic mountain views.

The upper level of the home features open plan kitchen, living and dining area. The modernised kitchen offers ample storage and preparation space complete with island bench, gas cooktop and electric oven, bird's eye view of the pool and servery window to connect the large covered rear patio. The outdoor area adjacent to the sparkling in ground pool is the ideal spot to relax or host family and friends.

An enormous covered deck extends from the internal living towards the views, providing an additional external space to unwind or entertain and enjoy the outlook.

The generous floor plan includes all four bedrooms and 2 bathrooms on the same level, including a spacious master suite with walk-in-robe and ensuite. All bedrooms are carpeted, generously sized and include built-in wardrobes, along with ceiling fans and split-system air conditioning.

4  2  3 

**FOR SALE**

Please Call

**AGENTS**

Nadine Edwards  
0423 602 606  
nedwards@ljheh.com.au

**AGENCY**

LJ Hooker Cairns Edge Hill  
(07) 4053 9999

All information contained therein is gathered from relevant third parties sources.  
We cannot guarantee or give any warranty about the information provided.  
Interested parties must rely solely on their own enquiries.

 **LJ Hooker**

The lower level of the home, accessible via an internal staircase, offers a large, light filled rumpus room with a convenient office nook and plenty of storage space, offering flexibility as a games room, second living area or home office. From this level you also have direct access to the covered car accommodation.

The property provides 2 car covered parking plus additional space for a boat or caravan, offering excellent practicality for families with extra vehicles or recreational equipment. A 6.6kW solar system with inverter is also installed, helping to improve energy efficiency and reduce running costs.

Conveniently located in Bentley Park, the home is within the Bentley Park College catchment and close to additional schools including St Therese's Catholic School, Hambledon State School and MacKillop Catholic College.

Enjoy easy access to Mount Sheridan Plaza and Edmonton Coles shopping precinct, offering supermarkets, cafes and everyday services. Nearby Sugarworld Adventure Park and parklands provide water slides, pools and great outdoor spaces for family recreation.

Call to arrange your inspection!  
Auction On Site & Online Via AuctionsLive.  
Saturday 18 April at 12:00pm

- \*Offers considered prior to Auction\*\*

This property is being sold by auction or without a price and therefore a price guide cannot be provided. The website may have filtered the property into a price bracket for website functionality purposes

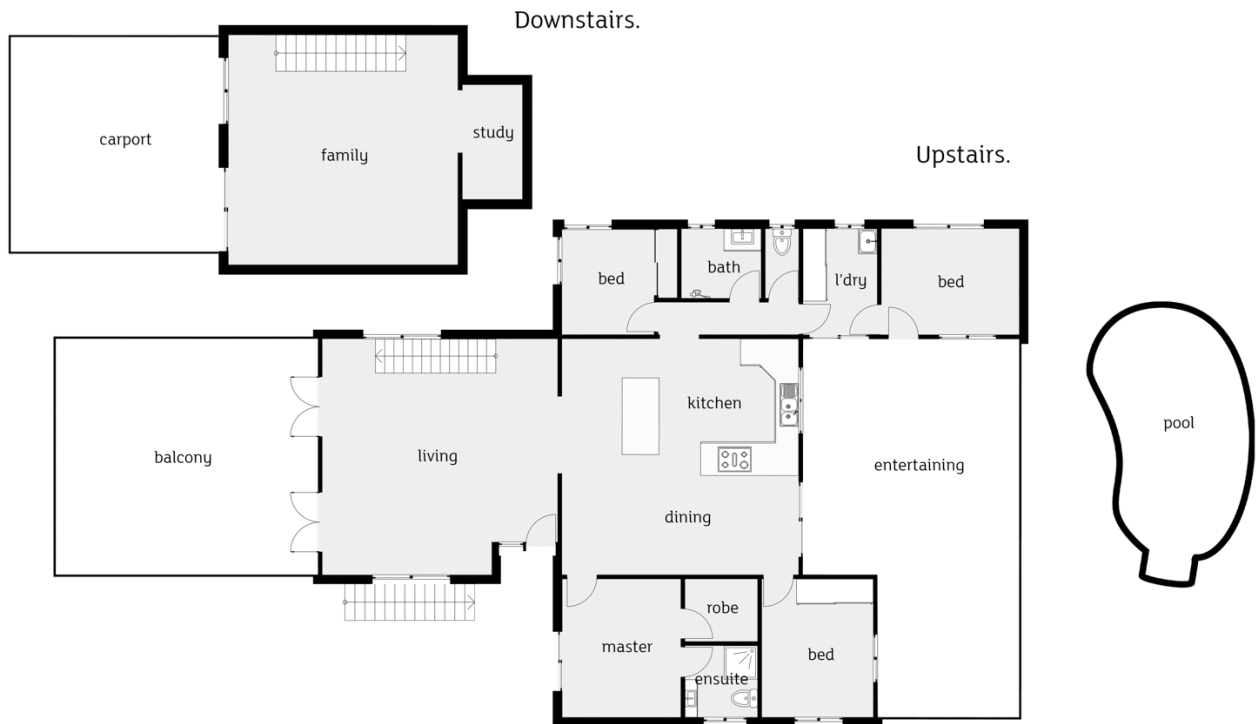
## MORE DETAILS

Property ID	3YDKFMB
Property Type	House
Land Area	819 m2
Including	Ensuite
	Air Conditioning
	Pool
	Deck
	Dishwasher
	Outdoor Entertaining
	Floorboards
	Built-in-Robes
	Solar Panels

**Nadine Edwards 0423 602 606**  
Director | [nedwards@ljheh.com.au](mailto:nedwards@ljheh.com.au)

**LJ Hooker Cairns Edge Hill (07) 4053 9999**  
81 - 83 Woodward Street, EDGE HILL QLD 4870  
[cairnsedgehill.ljhooker.com.au](http://cairnsedgehill.ljhooker.com.au) | [cairnsedgehill@ljheh.com.au](mailto:cairnsedgehill@ljheh.com.au)





Whilst LJ Hooker Edge Hill has made every effort to ensure the accuracy of the floorplan contained here, measurements are approximate and no responsibility is taken for any error, omission or mis-statement. This plan is for illustration purposes only.