



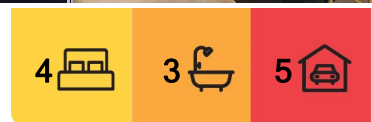
Bensville, 10 Yowie Close

Charming Acreage Living with Unparalleled Privacy & Convenience

Set across 2.5 acres of sunlit, fully usable land, this beautifully reimagined residence offers an exceptional balance of space, style, and rural tranquillity. Designed for both family living and effortless entertaining, the home features refined interiors, soaring ceilings, and seamless indoor-outdoor integration, embracing its picturesque natural surroundings.

A wraparound verandah frames the residence, inviting in light and leafy vistas, while the bespoke chef's kitchen-appointed with stone benchtops, a gas cooktop, butler's pantry, and built-in wine fridge-anchors the open-plan living and dining areas. Expansive alfresco entertaining overlooks the pristine pool and landscaped backyard, offering a private sanctuary for relaxation and hosting.

Positioned in a sought-after Central Coast enclave, this remarkable estate is just minutes to Bensville Wharf, scenic walking trails, boutique cafés, and local schools, while a short



For Sale
Contact Agent

View
ljhooker.com.au/1GVHGC1

Contact
Tim Andrews
0412 663 065
tim.andrews@ljhooker.com.au
Dougal Miller-Sneddon
0423 138 180
dougal.millersneddon@ljhooker.com.au



Disclaimer: All information contained therein is gathered from relevant third parties sources. We cannot guarantee or give any warranty about the information provided. Interested parties must rely solely on their own enquiries.

LJ Hooker Terrigal
(02) 4385 8444

drive leads to Bouddi National Park, Bells at Killcare, and Maitland Bay Beach.

Key Features:

- * Luxury acreage estate set on 2.5 private, sunlit acres
- * Architecturally designed with soaring ceilings and engineered timber floors
- * Bespoke kitchen with stone benchtops, gas cooktop, butler's pantry, and built-in wine fridge
- * Expansive open-plan living and dining, flowing to an alfresco entertaining area
- * Stunning pool and fully fenced landscaped backyard, offering complete privacy
- * Master suite with private balcony, walk-in robe, and ensuite
- * Two additional bedrooms with walk-in robes, plus a guest bedroom with built-in robe
- * Powder room for guests, split-system and ducted air conditioning, ceiling fans throughout
- * Separate formal living room with fireplace for year-round comfort
- * Horse paddocks and stables with power, water and new surveillance systems, chook pen and machinery shed (13m x 8m - 6m x 7m awning)
- * Enviro-cycle, town water, and brand-new pool pump and chlorinator
- * Double lock-up garage (9m x 9m with mezzanine) as well as bathroom and additional sink
- * Moments to Bensville Wharf, nature trails, boutique cafés, and local schools
- * A short drive to Bouddi National Park, Bells at Killcare, and stunning shores of Maitland Bay Beach

More About this Property

Property ID	1GVHGC1
Property Type	AcreageSemi-rural
Land Area	2.5 acre
Including	Ensuite Air Conditioning Carport Close to Schools Close to Shops Garage Internal Laundry Pool Storage

Tim Andrews 0412 663 065

Principal / Licensee - LREA | tim.andrews@ljhooker.com.au

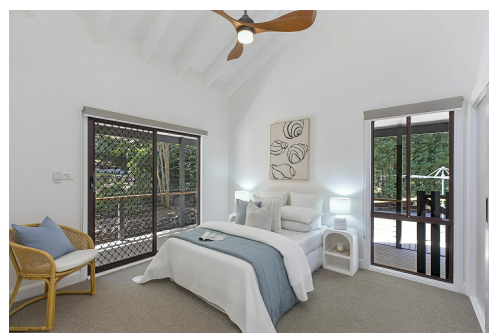
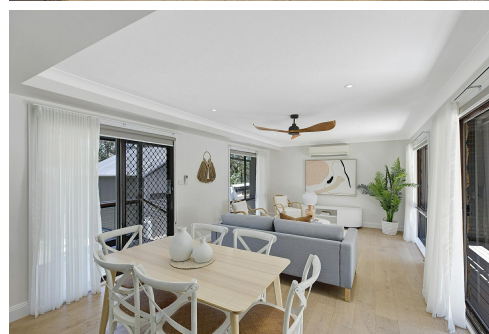
Dougal Miller-Sneddon 0423 138 180

Sales Specialist - LREA | dougal.millersneddon@ljhooker.com.au

LJ Hooker Terrigal (02) 4385 8444

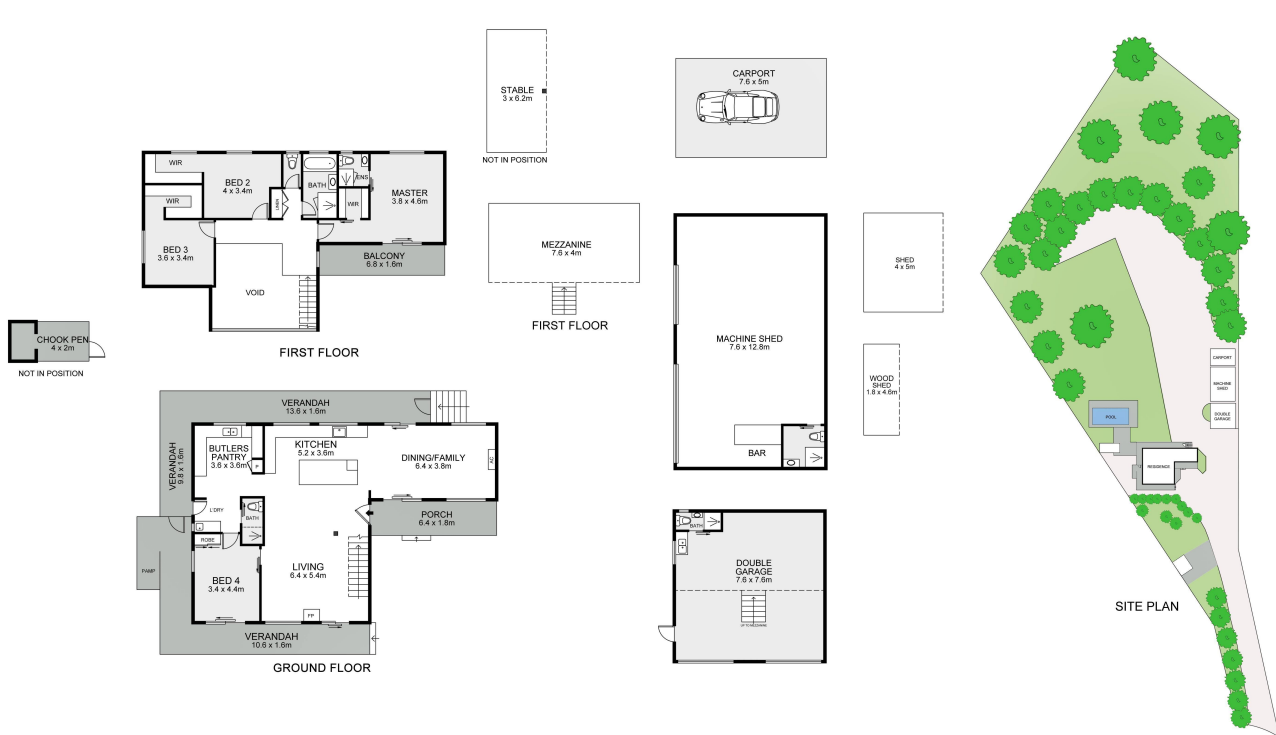
Shop 1 & 2, 1 Campbell Crescent, TERRIGAL NSW 2260

terrigan.ljhooker.com.au | terrigan@ljhooker.com.au



Disclaimer: All information contained therein is gathered from relevant third parties sources. We cannot guarantee or give any warranty about the information provided. Interested parties must rely solely on their own enquiries.

LJ Hooker Terrigal
(02) 4385 8444



10 Yowie Close, Bensville

Scale in metres. Indicative only. Dimensions are approximate. All information contained herein is gathered from sources we believe to be reliable. However we cannot guarantee its accuracy and interested persons should rely on their own enquiries



LJ Hooker Terrigal
(02) 4385 8444

Disclaimer: All information contained therein is gathered from relevant third parties sources. We cannot guarantee or give any warranty about the information provided. Interested parties must rely solely on their own enquiries.