



Bemboka, 2714 Snowy Mountains Highway

ATTENTION FIRST HOME BUYERS

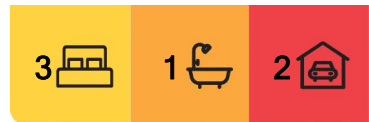
Nestled in a peaceful and private setting just 26 kilometres from Bega, 2714 Snowy Mountains Highway in Bemboka offers a relaxed lifestyle surrounded by nature. This three-bedroom, one-bathroom home presents an excellent opportunity for those seeking space, comfort and convenience with the charm of a rural address.

The home is set back from the road, offering privacy and tranquility, making it the perfect escape from the hustle and bustle. Recent upgrades include a brand new septic system and a new water pump, ensuring low-maintenance living with essential modern infrastructure already in place. An undercover carport provides sheltered parking and adds further practicality to this well-rounded property.

Whether you're looking for a peaceful place to call home or a country retreat within easy reach of town, this property combines rural appeal with everyday functionality in a scenic,



Disclaimer: All information contained therein is gathered from relevant third parties sources. We cannot guarantee or give any warranty about the information provided. Interested parties must rely solely on their own enquiries.



For Sale
\$440,000

View
By Appointment

Contact
Tim Shinnick
0466 475 131
tshinnick@ljhbega.com.au

LJ Hooker Bega
(02) 6492 4300

accessible location.

More About this Property

Property ID	NTUFGN
Property Type	House
Land Area	1169 m2

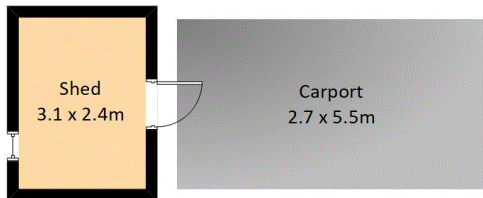
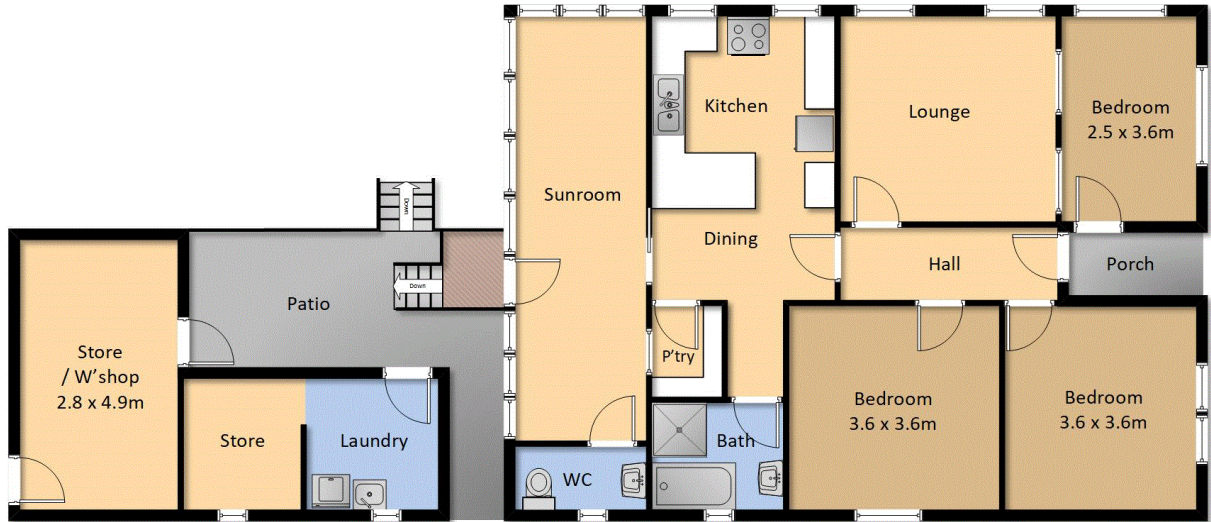
Tim Shinnick 0466 475 131
Licenced Real Estate Agent | tshinnick@ljhbega.com.au

LJ Hooker Bega (02) 6492 4300
225 Carp Street, BEGA NSW 2550
bega.ljhooker.com.au | office@ljhbega.com.au



LJ Hooker Bega
(02) 6492 4300

Disclaimer: All information contained therein is gathered from relevant third parties sources. We cannot guarantee or give any warranty about the information provided. Interested parties must rely solely on their own enquiries.



2714 Snowy Mts. Hwy Bemboka



Measurements are approximate and should be used as a guide only.