



22 Nelson Street, Bemboka

LARGE FAMILY HOME WITH STUNNING VIEWS

22 Nelson Street Bemboka offers an impressive and versatile property ideal for families or those seeking dual living options. The large three-bedroom, two-bathroom home is complemented by a fully self-contained two-bedroom granny flat, perfect for extended family or additional income potential. Set on a generous half-acre block, the property is solidly built with a textured brickwork finish and features both reverse cycle air-conditioning and a wood fire for year-round comfort. The spacious kitchen includes an island bench and ample storage, flowing through to the covered rear entertaining deck. Convenience and accessibility are well considered with ramped entry to the upper level from both the front and the side carport. The home also includes town water plus a 60,000-litre tank ideal for gardens, and a two-car carport providing practical undercover parking plus a two-car garage. This is a quality property in the heart of Bemboka offering space, flexibility and stunning mountain views.

5 🏠 3 🚿 4 🚗

FOR SALE
Contact Agent

VIEW
By Appointment

AGENTS
Tim Shinnick
0466 475 131
tshinnick@ljhbega.com.au

AGENCY
LJ Hooker Bega
(02) 6492 4300

All information contained therein is gathered from relevant third parties sources.
We cannot guarantee or give any warranty about the information provided.
Interested parties must rely solely on their own enquiries.

 **LJ Hooker**

MORE DETAILS

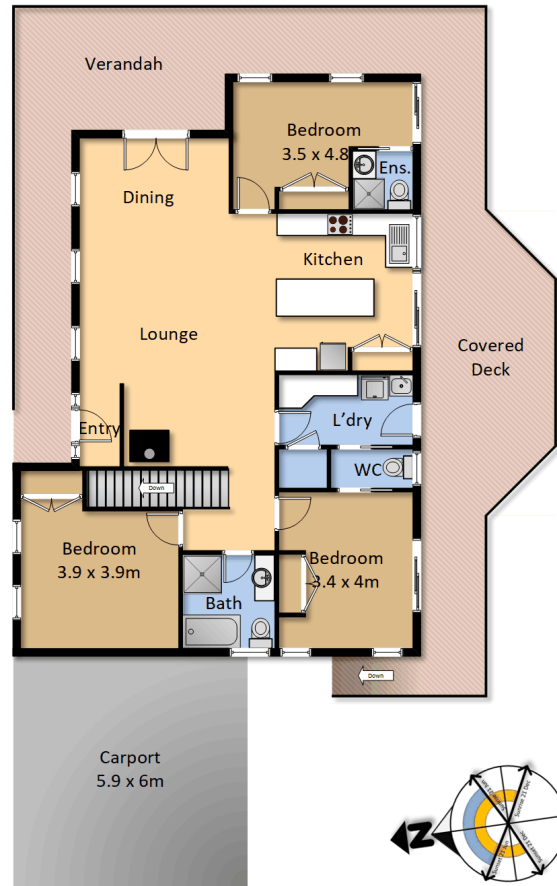
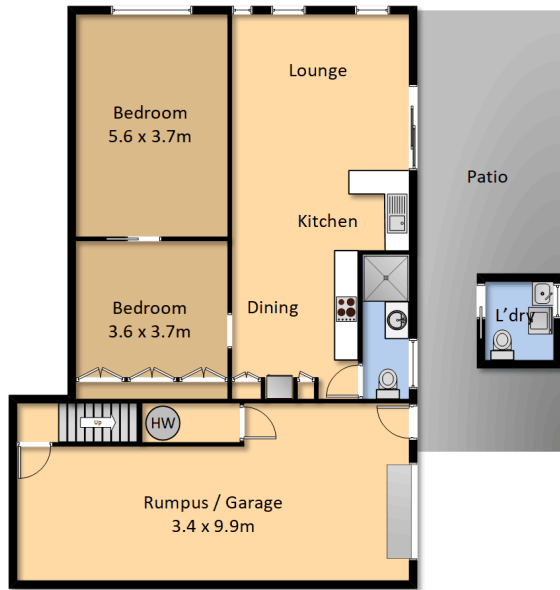
Property ID NYGFGN
Property Type House
Land Area 2023.43 m2

Tim Shinnick 0466 475 131
Licenced Real Estate Agent | tshinnick@ljhbega.com.au

LJ Hooker Bega (02) 6492 4300
225 Carp Street, BEGA NSW 2550
bega.ljhooker.com.au | office@ljhbega.com.au



All information contained therein is gathered from relevant third parties sources.
We cannot guarantee or give any warranty about the information provided.
Interested parties must rely solely on their own enquiries.



22 Nelson St Bemboka

Measurements are approximate and should be used as a guide only.

