



15 Robertson Street, Bemboka

BIG BLOCK, COUNTRY LIVING

With South Coast lifestyle locations continuing to surge in popularity, it's easy to understand the growing demand for quality country village homes. This thoughtfully designed three-bedroom residence delivers modern comfort with relaxed rural charm - and is sure to impress.

Positioned on a classic half-acre (approx. 2,000sqm) block with beautiful elevated views, the property offers space, privacy, and a peaceful setting. A long driveway leads to a well-placed double garage set well back from the road, while the home itself sits toward the rear of the gently undulating block to maximise outlook and quiet enjoyment.

Inside, the open plan layout blends contemporary finishes with warm country character, creating a welcoming and highly functional family space.

Key features include:

- Stylish modern design with a touch of country flair
- Central country-style kitchen with generous storage and bench space
- Three spacious bedrooms
- Two beautifully appointed bathrooms
- Private deck ideal for outdoor entertaining and everyday living

All information contained therein is gathered from relevant third parties sources.
We cannot guarantee or give any warranty about the information provided.
Interested parties must rely solely on their own enquiries.

3 2 2

FOR SALE
\$620,000

VIEW
By Appointment

AGENTS
Paul Griffin
0400 024 300
pgriffin@ljhbega.com.au

AGENCY
LJ Hooker Bega
(02) 6492 4300



Built with energy efficiency in mind, the home is fully insulated and equipped with instant gas hot water and a gas cooktop for practical, cost-effective living.

A standout home in a sought-after lifestyle setting - this is one property you'll want at the top of your inspection list. Genuine vendor, genuine opportunity.

MORE DETAILS

Property ID	P2CFGN
Property Type	House
Land Area	2023 m2

Paul Griffin 0400 024 300

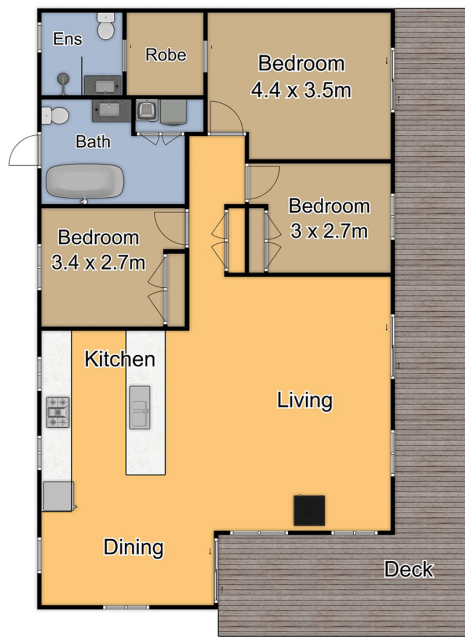
Licensee & Principal | pgriffin@ljhbega.com.au

LJ Hooker Bega (02) 6492 4300

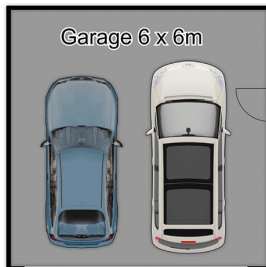
225 Carp Street, BEGA NSW 2550

bega.ljhooker.com.au | office@ljhbega.com.au





Plan is not to scale.
Measurements are approximate
and should be used as a guide only.



15 Robertson Street
Bemboka