

423 Sams Corner Road, Bemboka


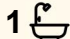

MOUNT VISTA

"Mount Vista", 423 Sams Corner Road, Bemboka, NSW, 2550.

250 acres of gently undulating grazing country, with several dams and a creek plus wide wet gullies, making it a perfect size holding. The property boasts stunning panoramic views that showcase the beauty of the surrounding landscape.

Nestled within this picturesque setting is a 3-bedroom farm cottage, strategically positioned on an elevated location. The cottage provides comfortable accommodation and a cozy retreat amidst the tranquility of rural life.

Benefiting from its great location, "Mount Vista" offers a perfect blend of privacy and accessibility. Whether you're looking to expand your farming operations or seeking a serene countryside escape, this property presents an exceptional opportunity to embrace the idyllic lifestyle of rural New South Wales.

3  1  0 

FOR SALE

\$1,300,000

AGENTS

Paul Griffin
0400 024 300
pgriffin@ljhbega.com.au

AGENCY

LJ Hooker Bega
(02) 6492 4300

All information contained therein is gathered from relevant third parties sources.
We cannot guarantee or give any warranty about the information provided.
Interested parties must rely solely on their own enquiries.

 **LJ Hooker**

MORE DETAILS

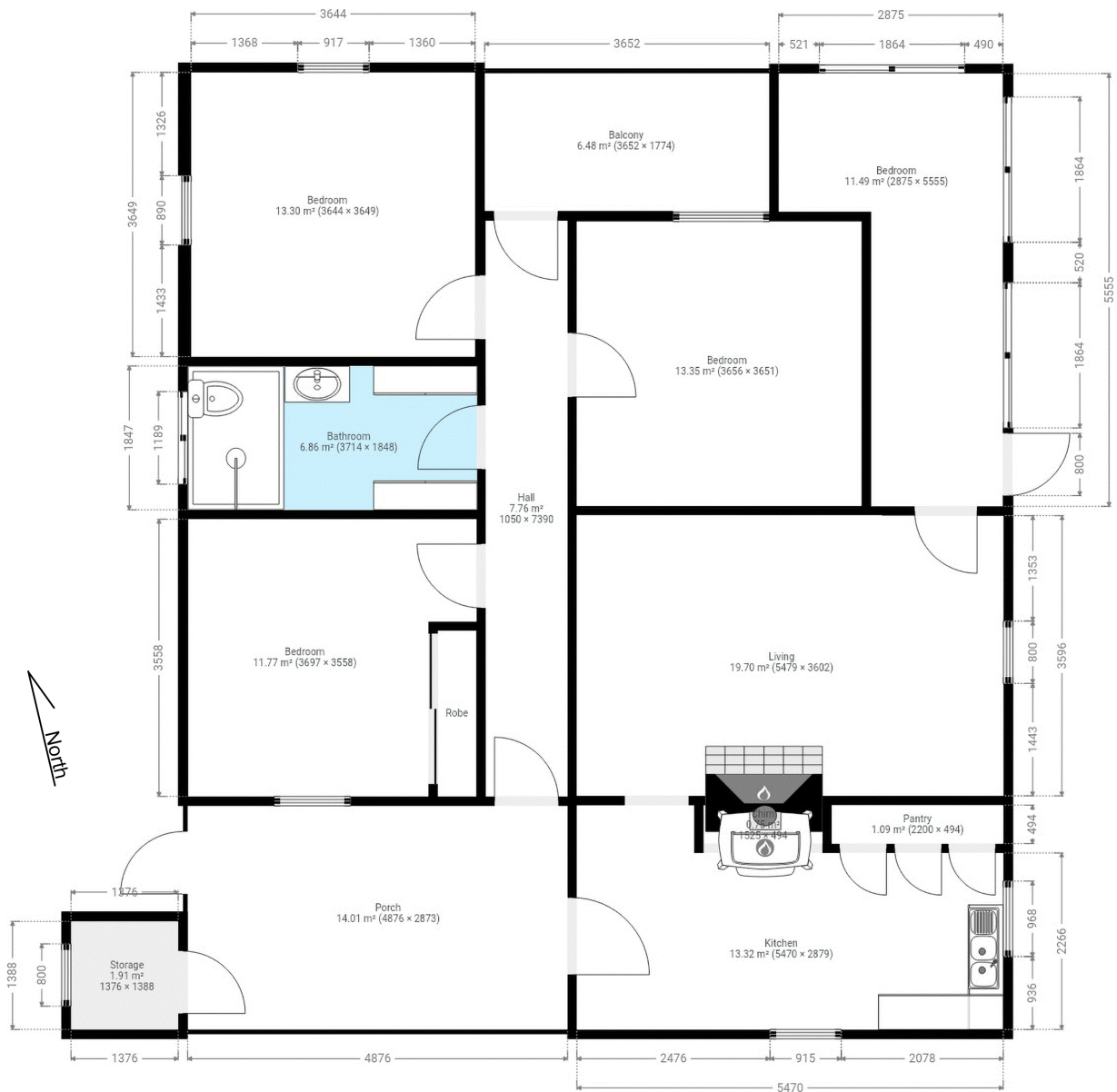
Property ID N87FGN
Property Type AcreageSemi-rural
Land Area 250 acre

Paul Griffin 0400 024 300
Licensee & Principal | pgriffin@ljhbega.com.au

LJ Hooker Bega (02) 6492 4300
225 Carp Street, BEGA NSW 2550
bega.ljhooker.com.au | office@ljhbega.com.au



All information contained therein is gathered from relevant third parties sources.
We cannot guarantee or give any warranty about the information provided.
Interested parties must rely solely on their own enquiries.



This plan is intended for marketing purposes only. All dimensions are approximate.

423 Sams Corner Rd Bemboka

All information contained therein is gathered from relevant third parties sources. We cannot guarantee or give any warranty about the information provided. Interested parties must rely solely on their own enquiries.

