



26-28 Robertson Street, Bemboka

MOVE IN STRAIGHT AWAY

Set in the heart of the charming village of Bemboka, this unique property presents an outstanding opportunity for those seeking flexibility, lifestyle and future potential. Positioned across two generous half-acre blocks, the property offers a renovated and comfortable shed with development consent already in place to live in, making it an ideal base while you plan and build your dream home.

Inside, the space has been thoughtfully set up to provide easy, functional living, featuring two bedrooms plus a study, along with the convenience of power and town water already connected. A completed septic system further enhances the practicality, allowing you to move in and enjoy from day one.

Surrounded by peaceful rural surrounds, the property captures stunning views and enjoys a quiet setting that perfectly reflects the relaxed Bemboka lifestyle. Whether you are looking to build your forever home, invest for the future or simply enjoy a more laid-back way of living, this is an opportunity that is becoming increasingly hard to find.

Contact Tim today to arrange your inspection, as properties like this don't stay on the market for long.

2 1 2

FOR SALE
\$425,000

AGENTS

Tim Shinnick
0466 475 131
tshinnick@ljhbega.com.au

AGENCY

LJ Hooker Bega
(02) 6492 4300

All information contained therein is gathered from relevant third parties sources.
We cannot guarantee or give any warranty about the information provided.
Interested parties must rely solely on their own enquiries.

LJ Hooker

MORE DETAILS

Property ID P4AFGN
Property Type AcreageSemi-rural
House Size 79 m2
Land Area 1 m2

Tim Shinnick 0466 475 131

Licensed Real Estate Agent | tshinnick@ljhbega.com.au

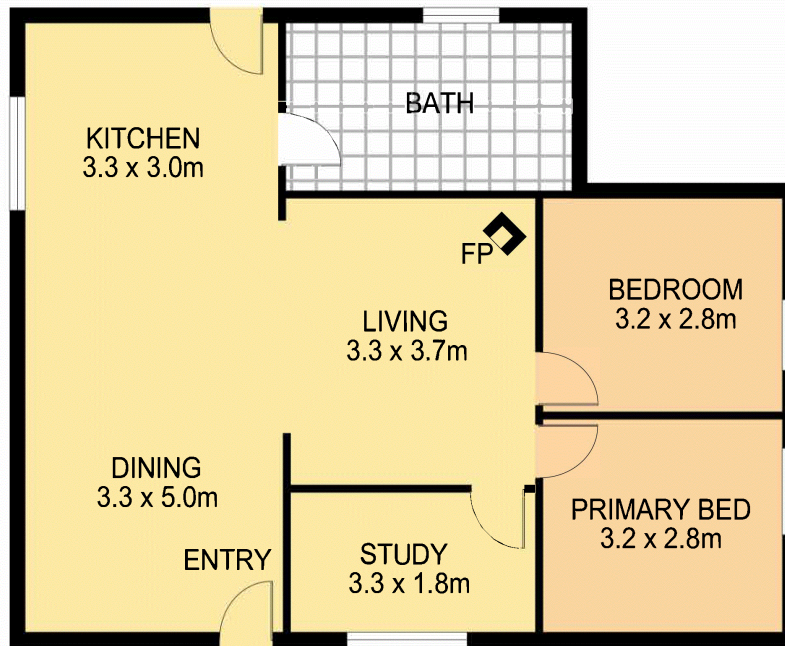
LJ Hooker Bega (02) 6492 4300

225 Carp Street, BEGA NSW 2550

bega.ljhooker.com.au | office@ljhbega.com.au



All information contained therein is gathered from relevant third parties sources.
We cannot guarantee or give any warranty about the information provided.
Interested parties must rely solely on their own enquiries.



26-28 Robertson Street, Bemboka

 2 BED  1 BATH  2 CAR

TOTAL FLOOR AREA: 80m²



Whilst every attempt has been made to ensure the accuracy of this floorplan, measurements are approximate and therefore the intended use of this image is for illustrative purposes only and is subject to strict copyright. For more information please contact Corner Design Studio.