



4 Robert Street, Belmont South

Single-Level Four-Bedroom Home on 537.5sqm Block

EXPRESSIONS OF INTEREST CLOSES 27.01.26


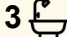

Single-level home positioned on a flat, fully fenced 537.5 square metre block.

The property includes water glimpses of Belmont Bay/Lake Macquarie.

The home contains four bedrooms, all with ceiling fans. Two bedrooms include built-in wardrobes. The main bedroom has an ensuite. Two additional bathrooms are provided, one of which includes a built-in bathtub.

Polished floorboards are present throughout the home. Dining room located off the kitchen. The kitchen includes laminate benchtops, an underbench oven, electric cooking facilities and a dishwasher. There is a deck at the front of the home and another deck at the rear.

Car accommodation includes a double carport at the back of the property, a shed, and additional parking space at the front suitable for multiple vehicles.

4  3  2 

FOR SALE
\$1,063,000

AGENTS

Steven Georgalas
0499 191 411
steven@ljhookerbelmont.com.au

Eddie Toubia
eddie@ljhookerbelmont.com.au

AGENCY

LJ Hooker Belmont
(02) 4945 8600

All information contained therein is gathered from relevant third parties sources. We cannot guarantee or give any warranty about the information provided. Interested parties must rely solely on their own enquiries.

 **LJ Hooker**

Distances to key locations include:

- approx. 93m to the lake edge
- approx. 400m to the Fernleigh Track
- approx. 1.2km to Lake Macquarie Yacht Club
- approx. 1.3km to Blacksmiths Beach
- approx. 1.4km to Belmont Golf and Bowls Club
- approx. 2.0km to Belmont CBD

The property is zoned for Marks Point Public School and Swansea High School.

The information contained herein has been provided by people we believe to be reliable, however all interested parties must rely on their own enquiries.

MORE DETAILS

Property ID	1YJ1J
Property Type	House
House Size	537.5 m2
Land Area	537.5 m2
Including	Ensuite
	Air Conditioning
	Dishwasher
	Built-in-Robes
	Area Views
	Car Parking - Surface
	Carpeted
	Close to Schools
	Close to Shops
	Close to Transport

Steven Georgalas 0499 191 411

| steven@ljhookerbelmont.com.au

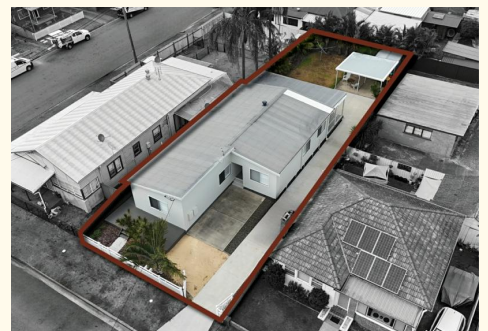
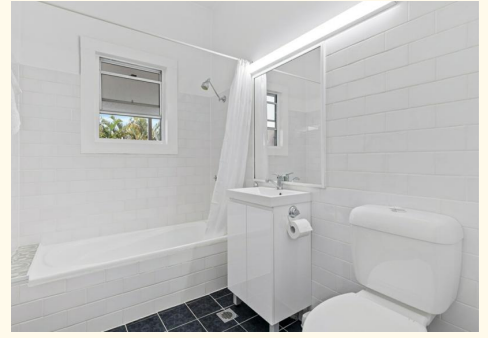
Eddie Toubia

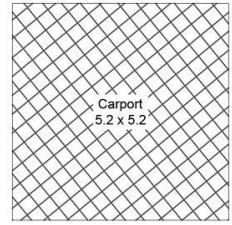
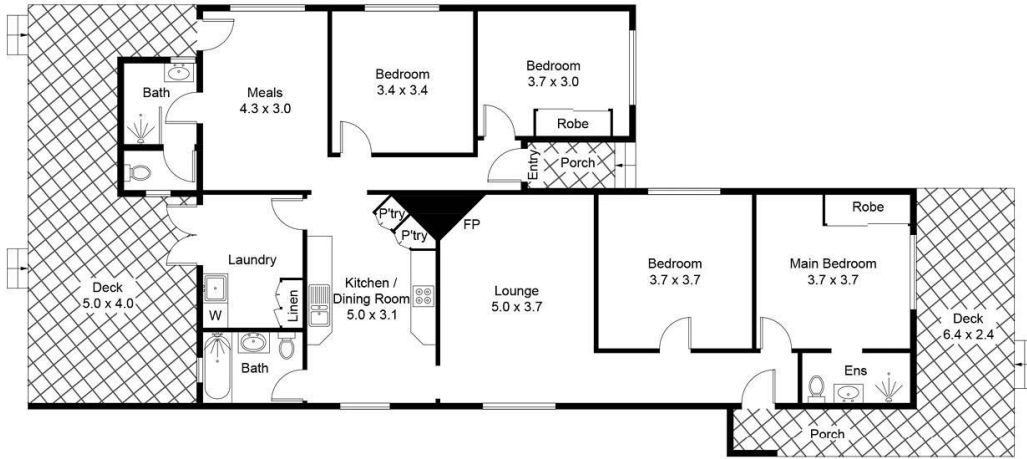
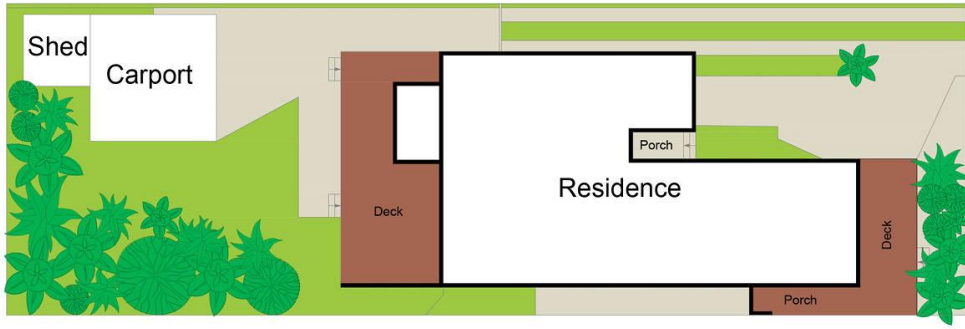
| eddie@ljhookerbelmont.com.au

LJ Hooker Belmont (02) 4945 8600

562 Pacific Highway, BELMONT NSW 2280

belmontnsw.ljhooker.com.au | office@ljhookerbelmont.com.au





(Not Shown In Actual Location / Orientation)



Approximate Gross Internal Area = 132.5 sq m