



5 Glenwood Drive, Bellevue Heights

Tranquility, space & potential in Bellevue Heights

Auction Location: onsite

Set on 2,140 sqm (approx) tree-lined Torrens Titled allotment with 25.7m (approx) frontage, this circa 1968 solid brick home presents an exciting canvas for families, downsizers, renovators, investors, and developers. With a north-east orientation and a generous garden setting, you'll enjoy tranquil, sun-filled living in a suburb that blends peace and convenience, as well as ocean views from the balcony, bedroom, and street.

Step inside to discover timber floors throughout, a combined gas cooktop and electric oven in the kitchen, air-conditioning and heating for comfort, and 21 solar panels (approx. 2.4kW) keeping the energy bills down. The roof is Colorbond and the ceiling is insulated. There is plenty of storage, a tool shed, and an underfloor cellar.

Outdoors is where this property truly shines: the generous land gives you space to roam, gardens to create, plenty of space for a tiny home (STCC) or a granny flat (STCC), or even grand plans or subdivision (STCC) for the future. It's a rare opportunity to pick up a large block in a sought-after locale.

All information contained therein is gathered from relevant third parties sources. We cannot guarantee or give any warranty about the information provided. Interested parties must rely solely on their own enquiries.

3 1 2

FOR SALE

Sold by Jonathan Teng LJ Hooker Kensington | Unley

AGENTS

Jonathan Teng
0430 140 364
jteng@ljhkensingtonunley.com.au

AGENCY

LJ Hooker Kensington | Unley
(08) 8431 6088

LJ Hooker

Location speaks for itself. You're just minutes by foot to quality schools - Bellevue Heights Primary School and Blackwood High School, a short drive to cafés, restaurants and supermarkets in Bellevue Heights, Pasadena, Blackwood and Belair, and within easy reach of public transport - 6 minutes to the bus, 8 minutes to the train at Mitchell Park. Easy access to the city and major roads, including the upgrading South Road Corridor, means lifestyle and connectivity go hand in hand. It is only minutes away from Flinders University and Flinders Hospital.

Whether you are after a "move-in today" home, an opportunity to renovate or rebuild, a family garden haven, or an investment with scope, this home ticks the box. Moments from nature, minutes from amenity, with a bit of vision the future here could be something special.

Property Features:

- Bedrooms & Living: 3 bedrooms, 1 bathroom, timber floors throughout
- Kitchen: Laminated benches, gas cooktop, electric oven
- Heating & Cooling: Split, wall, and window system air-conditioning, gas heating
- Solar: 21 panels (2.4 kW)
- Hot Water: Gas system
- Roof, Insulation, Wall: Colorbond roof, skylights, ceiling insulation, solid brick
- Storage: multiple storage space, tool shed, and underfloor cellar
- Hobbies: chook house & aviary
- Orientation: North-east facing, maximising natural light

Outdoor & Renovation, Addition, Rebuild, and Subdivision Potential (STCC):

- Expansive gardens and entertaining, a creek, and space for cubby house, tiny home or granny flat (STCC)
- Generous block size with scope to renovate, extend, rebuild, or subdivide (STCC)
- Ideal for creating your dream outdoor oasis or adding value over time, with ocean views

Lifestyle & Convenience:

- Education: Bellevue Heights Primary School, Blackwood High School, Flinders University
- " Health Care: Flinders Hospital
- " Cafés & Restaurants: Local Cafes, Pasadena, Blackwood, Belair, Windy Point
- Supermarkets: Pasadena Foodland, Blackwood Coles & Woolworths
- Public Transport: 6-minute walk to bus stops, 8-minute walk to Mitchell Park Railway Station
- Road & City Access: Easy access to Adelaide CBD via upgrading South Road Corridor

Why This Home Stands Out:

- Large block in a leafy, family-friendly street
- Tranquil, private setting yet close to everyday conveniences
- Flexible living spaces with timber floors throughout
- Strong potential for renovation, extension, future rebuild or subdivision (STCC)

This is more than a home - it's a lifestyle opportunity. Whether you're seeking a family sanctuary, a garden haven, or an investment with future potential, 5 Glenwood Drive offers tranquility, space, peace, and convenience in one of Adelaide's most desirable suburbs.

AUCTION: Thursday 4 December at 6:00pm onsite (unless sold prior)

CT: Volume 5638 Folio 310

Council: City of Mitcham
Council Rates: \$1,539.55 per annum (approx.)
Water Rates: \$184.08 per quarter (approx.)
Land Size: 2,140 square metres (approx.)
Year Built: 1968 (approx.)

To register interest, copy and paste the below link into your browser:
<https://prop.ps//PCS2qsnUkPUr>

The Vendor's Statement (Form 1) will be available for perusal by members of the public:-

(A) at the office of the agent for at least 3 consecutive business days immediately preceding the auction; and
(B) at the place at which the auction is to be conducted for at least 30 minutes immediately before the auction commences.

MORE DETAILS

Property ID	61J7FDJ
Property Type	House
Including	Air Conditioning Courtyard Balcony Deck Dishwasher Outdoor Entertaining Floorboards Workshop Built-in-Robes Solar Panels

Jonathan Teng 0430 140 364

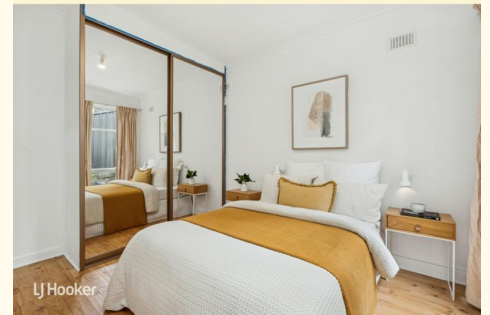
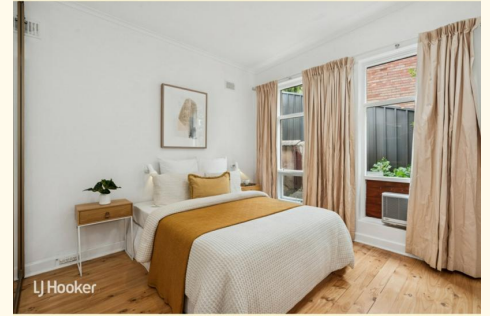
Sales Consultant | jteng@ljhkensingtonunley.com.au

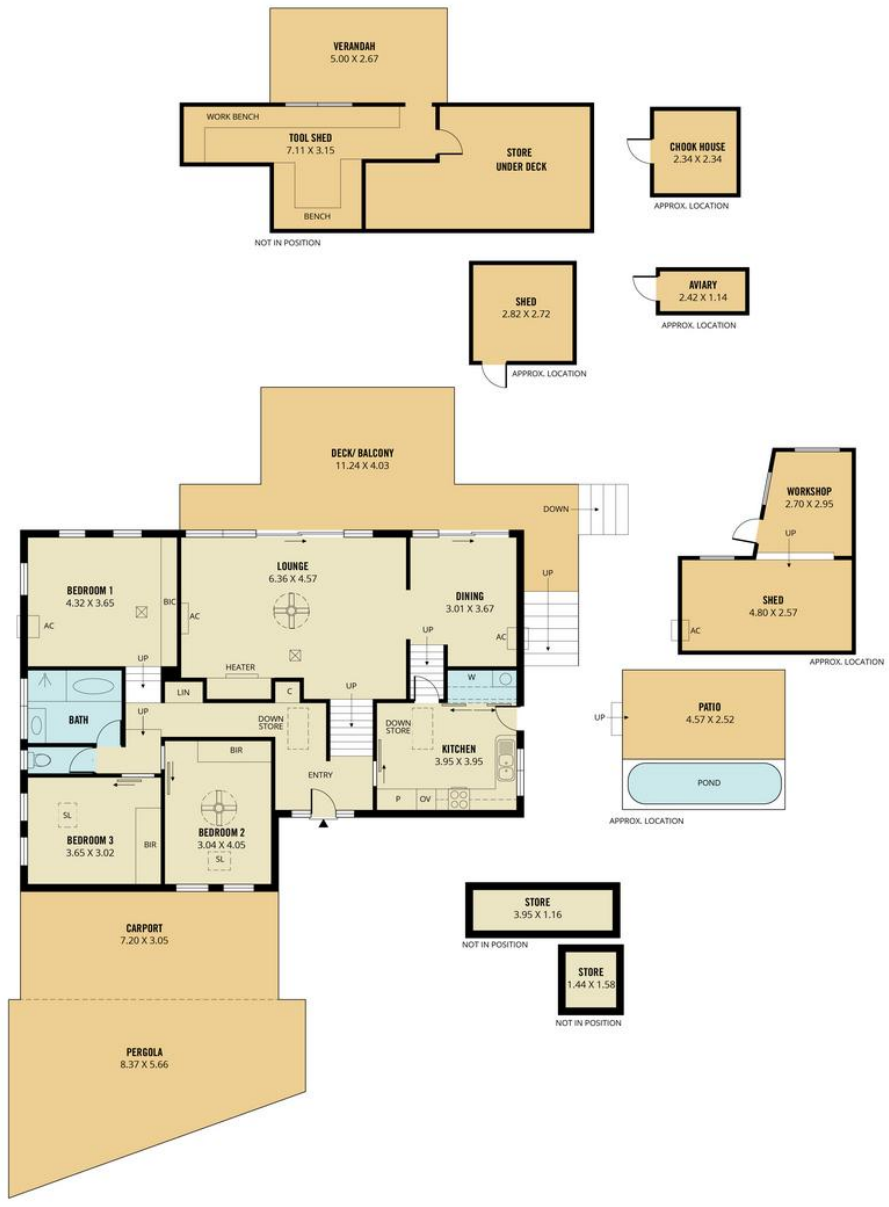
LJ Hooker Kensington | Unley (08) 8431 6088

295 Kensington Road, KENSINGTON PARK SA 5068

kensingtonunley.ljhooker.com.au |

reception@ljhkensingtonunley.com.au





324m ²	141m ²	69m ²	32m ²	34m ²	48m ²
TOTAL	Living	Shed/Workshop/ Store Under Deck	Deck/ Balcony	Carport/ Patio	Pergola/ Verandah



Scale in metres. This drawing is for illustration purposes only. All measurements are approximate and details intended to be relied upon should be independently verified.

Produced by The Fotobase Group

All information contained therein is gathered from relevant third parties sources. We cannot guarantee or give any warranty about the information provided. Interested parties must rely solely on their own enquiries.

