

Bellerive, 1/4 Mildura Street

Bellerive - Character, Charm and Convenience

Ant's "Fluff Free" Description...

- * Set on an easy care block within an even easier stroll of Eastlands Shopping Centre, this Bellerive beauty is the ideal opportunity for 1st home buyers or investors.
- * With loads of sunshine and more space than you may think, the polished timber flooring is just part of its charm!
- * Spacious open plan lounge and dining area with cosy wood heater PLUS reverse cycle air-conditioner.
- * Charming country-style kitchen with breakfast bar and plenty of storage.
- * Modern bathroom with separate shower and big bathtub for the kids!
- * Plus a large extra family room at the rear of the home - ideal for keeping the kids separate from the grown-ups while they're running amok!
- * Two big bedrooms with built-ins - plus a smaller single bedroom or study.
- * Private rear courtyard and entertaining area plus lovely front lawn area.



Disclaimer: All information contained therein is gathered from relevant third parties sources. We cannot guarantee or give any warranty about the information provided. Interested parties must rely solely on their own enquiries.



For Sale
Offers Over \$595,000

View
ljhooker.com.au/5WMAFCS

Contact
Ant Manton
0408 621 856
antmanton@ljhookerpinnacle.com
Zac Flanagan
0466 685 937
zflanagan@ljhookerpinnacle.com

LJ Hooker Pinnacle Property Rentals
(03) 6272 8177

- * Plus off-street parking for two cars.
- * And all this within a hop and two steps of all the shops, schools, transport and services that the area has to offer - go straight from KFC to the gym...then head back home to relax!
- * There's nothing left to do except arrange an Inspection and fall in love...

Onwards and upwards to your centrally located Bellerive beauty!

"I Work Harder - It's THAT Simple!"

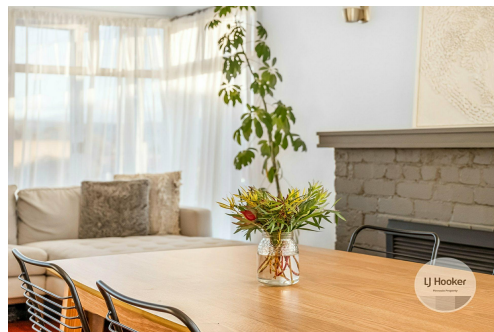
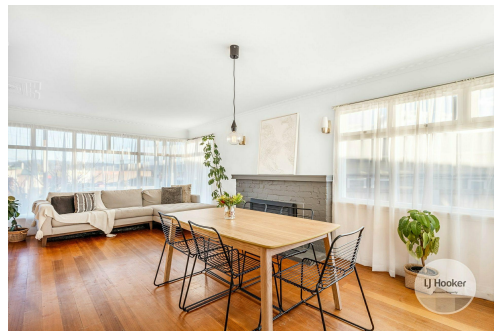
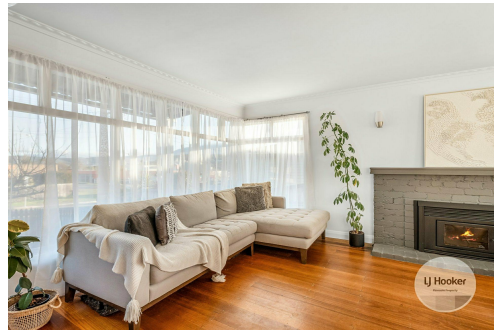
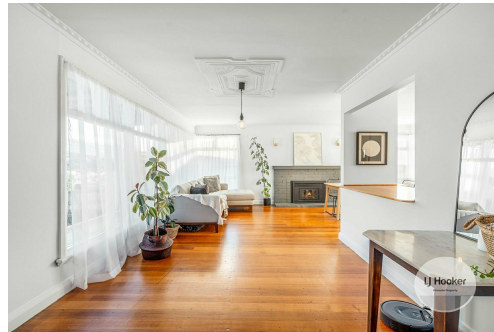
Disclaimer: The information contained herein has been supplied to us and we have no reason to doubt its accuracy, however, cannot guarantee it. Accordingly, all interested parties should make their own enquiries to verify this information.

More About this Property

Property ID	5WMAFCS
Property Type	House
House Size	147 m2
Land Area	447 m2
Including	Air Conditioning Toilets (1) Courtyard Balcony Deck Outdoor Entertaining Floorboards Built-in-Robes Fully Fenced

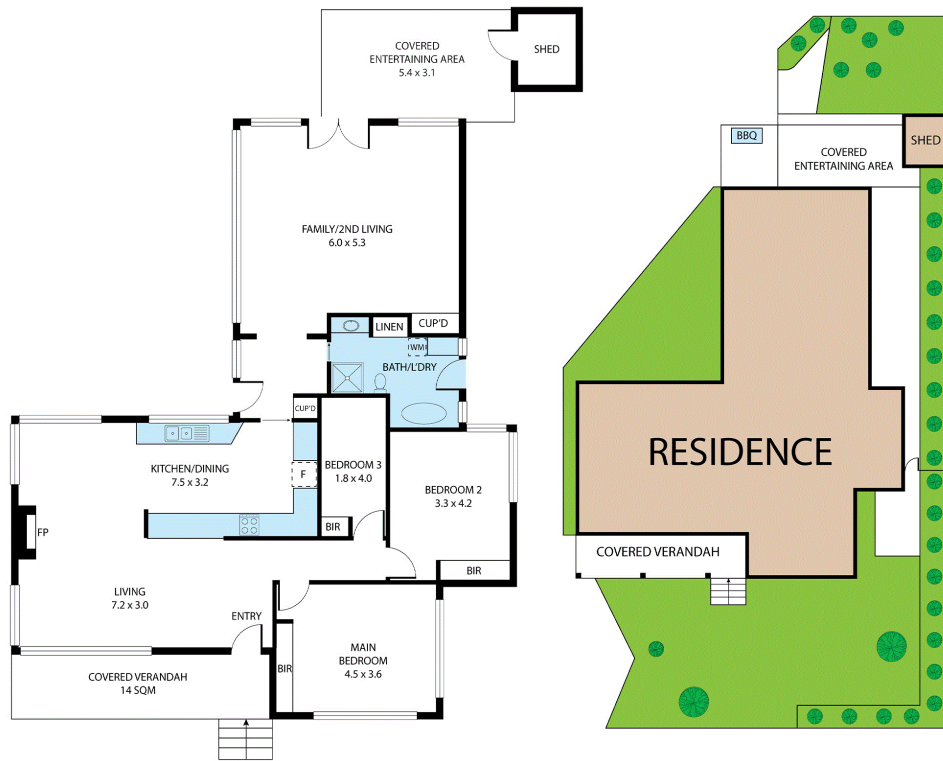
Ant Manton 0408 621 856
 Real Estate Agent | antmanton@ljhookerpinnacle.com
Zac Flanagan 0466 685 937
 Operations Manager to Ant Manton | zflanagan@ljhookerpinnacle.com

LJ Hooker Pinnacle Property Rentals (03) 6272 8177
 122 Murray Street, HOBART TAS 7000
pinnacleproperty.ljhooker.com.au | hello@ljhookerpinnacle.com



Disclaimer: All information contained therein is gathered from relevant third parties sources. We cannot guarantee or give any warranty about the information provided. Interested parties must rely solely on their own enquiries.

LJ Hooker Pinnacle Property Rentals
(03) 6272 8177



1/4 Mildura Street, Bellerive

Total approx. floor area: 147m²

Areas and dimensions are approximate and therefore this floor plan should only be used for illustrative purposes.

Real Estate Marketing by nextcreative.com.au



LJ Hooker Pinnacle Property Rentals
(03) 6272 8177

Disclaimer: All information contained therein is gathered from relevant third parties sources. We cannot guarantee or give any warranty about the information provided. Interested parties must rely solely on their own enquiries.