



# Bellerive, 8 Buchanan Street

Bellerive - A Stunning Family Treasure...and We're NOT Bluffing!

Ant's "Fluff-Free" Description...

Why This Property Will Steal Your Heart:

- \* Unbeatable Bellerive Bluff location: In one of Hobart's most desirable spots - just a short stroll to the beach and marina.
- \* First time offered in over 60 years: A family treasure that's ready for its next chapter.
- \* Circa 1941 classic: Solid, timeless, and bursting with character - they don't build them like this anymore!
- \* Stunning corner block: Immaculate gardens meticulously maintained by the current



**Disclaimer:** All information contained therein is gathered from relevant third parties sources. We cannot guarantee or give any warranty about the information provided. Interested parties must rely solely on their own enquiries.

5

1

4

**For Sale**  
Expressions of Interest

**View**  
[ljhooker.com.au/5X4WFCS](http://ljhooker.com.au/5X4WFCS)

**Contact**  
**Ant Manton**  
0408 621 856  
[antmanton@ljhookerpinnacle.com](mailto:antmanton@ljhookerpinnacle.com)

**LJ Hooker Pinnacle Property**  
**(03) 6272 8177**

owner (absolute kudos to them!).

\* Views to die for: Panoramic vistas of the Derwent River, Mount Wellington, and Hobart's sparkling skyline - nature's artwork on display.

#### Inside Features:

\* Five well-proportioned bedrooms: Space for the whole family, visitors, and even that home office you've always wanted.

\* Quality timberwork throughout: Rich, warm wood accents in every room - a testament to craftsmanship and elegance.

\* Upstairs living with balcony: Enjoy fresh air and dazzling views without leaving your lounge.

\* Charming period details: Decorative ceilings, timber trims, and elegant features that ooze character.

\* Cosy sunroom: The perfect spot to soak up the sun and admire your picture-perfect gardens...and those stunning views!

#### Outdoor Highlights:

\* Manicured gardens: Established, vibrant, and lovingly cared for - a genuine showpiece for the neighbourhood.

\* Garage and shed: All the storage you'll need for cars, tools, and weekend hobbies.

\* Prime corner block: Some 761m2 offering space, privacy, and street appeal that's second to none.

#### Location, Convenience, Lifestyle:

\* A short stroll to Bellerive Beach, cafes, and the marina - coastal vibes at your doorstep.

\* Close to schools, shops, and public transport - live where everything is within reach.

\* Just 10 minutes to Hobart CBD - the perfect mix of seaside serenity and city convenience.

\* Don't wait for another 60 years - this rare opportunity won't last! Call now to arrange your inspection.

Onwards and upwards to your Bellerive Bluff beauty!

"I Work Harder - It's THAT Simple!"

Disclaimer: The information contained herein has been supplied to us and we have no reason to doubt its accuracy, however, cannot guarantee it. Accordingly, all interested



**Disclaimer:** All information contained therein is gathered from relevant third parties sources. We cannot guarantee or give any warranty about the information provided. Interested parties must rely solely on their own enquiries.

**LJ Hooker Pinnacle Property**  
**(03) 6272 8177**



parties should make their own enquiries to verify this information.

## More About this Property

<b>Property ID</b>	5X4WFCS
<b>Property Type</b>	House
<b>House Size</b>	220 m2
<b>Land Area</b>	761 m2
<b>Including</b>	Toilets (2)

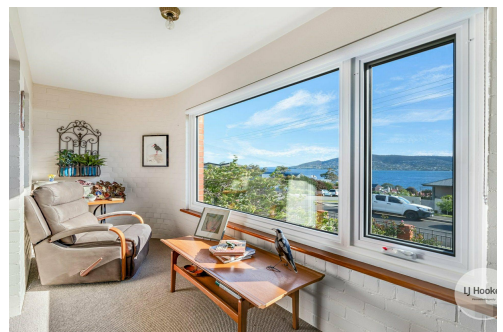
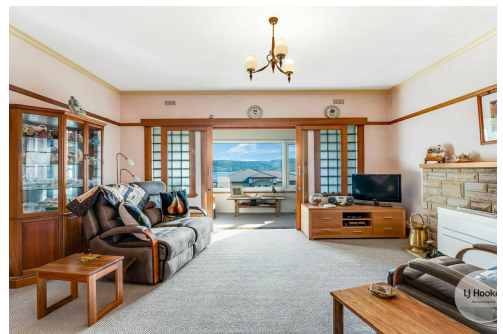
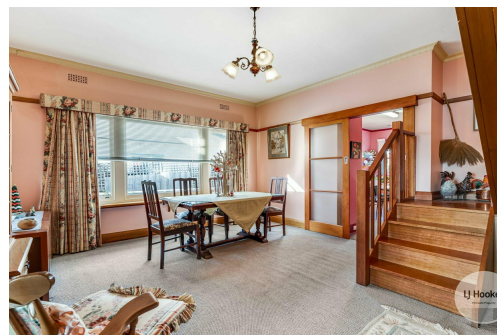
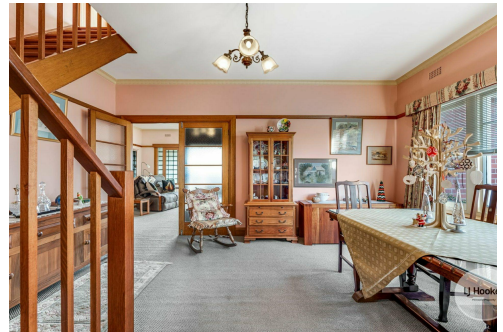
**Ant Manton 0408 621 856**

Real Estate Agent | [antmanton@ljhookerpinnacle.com](mailto:antmanton@ljhookerpinnacle.com)

**LJ Hooker Pinnacle Property (03) 6272 8177**

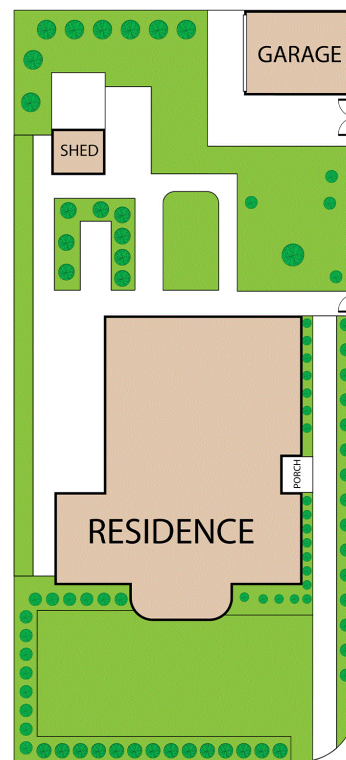
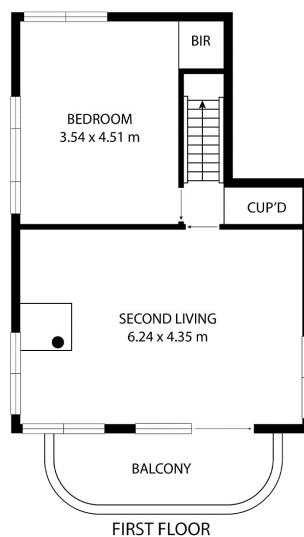
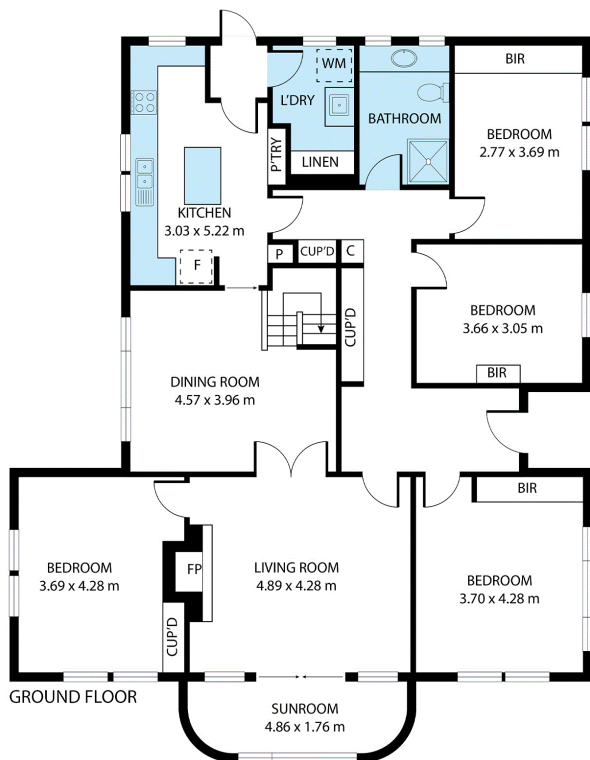
402 Main Road, GLENORCHY TAS 7010

[pinnacleproperty.ljhooker.com.au](http://pinnacleproperty.ljhooker.com.au) | [hello@ljhookerpinnacle.com](mailto:hello@ljhookerpinnacle.com)



**Disclaimer:** All information contained therein is gathered from relevant third parties sources. We cannot guarantee or give any warranty about the information provided. Interested parties must rely solely on their own enquiries.

**LJ Hooker Pinnacle Property**  
**(03) 6272 8177**



## 8 Buchanan Street, Bellerive

House area: 220 sqm

Areas and dimensions are approximate and therefore this floor plan should only be used for illustrative purposes.

Real Estate Marketing by [nextcreative.com.au](http://nextcreative.com.au)



**LJ Hooker Pinnacle Property**  
(03) 6272 8177

**Disclaimer:** All information contained therein is gathered from relevant third parties sources. We cannot guarantee or give any warranty about the information provided. Interested parties must rely solely on their own enquiries.