

## Belimbla Park, 1131 Burragorang Rd

### Serene Dual-Home Estate with Timeless Charm and Modern Comfort

Step into a world of warmth, character, and endless possibilities with this rare breathtaking property, offering two fully renovated homes on a serene one-acre plot. Perfectly blending country charm with modern style, this estate provides an inviting and comfortable lifestyle for families, animal lovers, and anyone seeking a peaceful escape with all the conveniences of contemporary living.

The main residence greets you with a grand entrance that flows into an open and spacious home, where rustic charm meets modern elegance. Exposed timber beams and soaring raked ceilings give the home a sense of airy grandeur, while wrought iron windows add a touch of timeless beauty. With four generous bedrooms plus a study, there's plenty of room for everyone. Two of the bedrooms are complete with walk-in robes and ensuites, making this the perfect home for both relaxation and entertaining.

7

5

6

**For Sale**  
\$1,990,000 - \$2,100,000

**View**  
By Appointment

**Contact**  
**Joe Safi**  
0410 798 219  
joe.safi@ljhooker.com.au  
**Nathan Fleming**  
0423 441 388  
nathan.fleming@ljhooker.com.au



**Disclaimer:** All information contained therein is gathered from relevant third parties sources. We cannot guarantee or give any warranty about the information provided. Interested parties must rely solely on their own enquiries.

**LJ Hooker Camden | Bringelly**  
**(02) 4655 2111**



At the heart of the home is the stunning shaker-style kitchen, designed for culinary enthusiasts. With stone benchtops, a walk-in pantry, and a charming breakfast bar, it's the ideal space to gather with loved ones. The inviting living area is warmed by an open fireplace, creating a cozy atmosphere, while the wrap-around verandah is the perfect place to unwind and take in the peaceful surroundings. And for a truly special touch, head up to your very own private watchtower and enjoy panoramic views of the beautiful landscape.

The beautifully landscaped gardens, featuring a magnificent Dragon Tree, provide a tranquil backdrop, while the expansive grounds offer room to explore and enjoy. Whether you're enjoying a quiet morning coffee or hosting friends and family, this home is designed for comfort and enjoyment.

The second residence offers a completely renovated, double-storey retreat, ideal for guests, extended family, or even as an air bnb property. With three spacious bedrooms, exposed beams, and a cozy combustion fireplace, it offers a welcoming and homely feel.

Additional features of the property include a large open bay shelter with a gable roof, providing plenty of parking and storage, as well as a generous paddock for animal lovers. Whether you dream of keeping horses, livestock, or simply enjoying the space, this property has room for it all.

This stunning estate is more than just a home it's a lifestyle. Enjoy the beauty and serenity of rural living with all the conveniences including town. Don't miss out on this one-of-a-kind opportunity to create the life you've always dreamed of.

Disclaimer: All information contained herein is true and correct to the best of our ability; however, we encourage all interested parties to carry out their own enquiries at all times.

## More About this Property

Property ID	JYQHUD
Property Type	House
Land Area	4048 m2

### Joe Safi 0410 798 219

Licensed Real Estate Agent | joe.safi@ljhooker.com.au

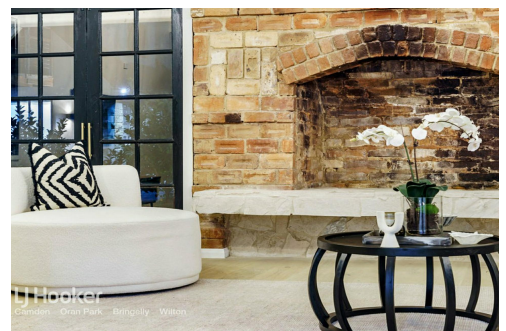
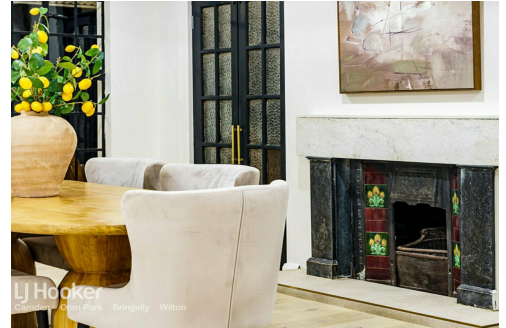
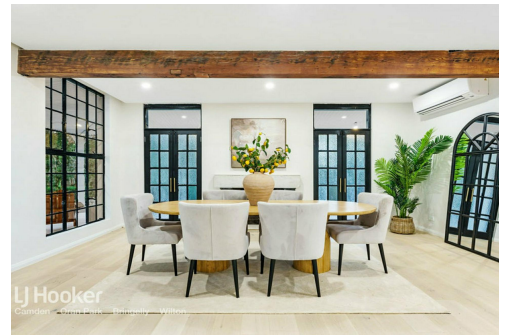
### Nathan Fleming 0423 441 388

Licensed Real Estate Agent | nathan.fleming@ljhooker.com.au

### LJ Hooker Camden | Bringelly (02) 4655 2111

84 Argyle Street, CAMDEN NSW 2570

camden-bringelly.ljhooker.com.au | camden@ljhooker.com.au



**Disclaimer:** All information contained therein is gathered from relevant third parties sources. We cannot guarantee or give any warranty about the information provided. Interested parties must rely solely on their own enquiries.

**LJ Hooker Camden | Bringelly**  
**(02) 4655 2111**