



## Belconnen, 5/13 Chandler Street

Lake Views and Top Notch Facilities!

The Netanya Apartment complex has some of the best facilities of any apartment complex in Canberra. These include an indoor swimming pool (swim all year), an outdoor pool, gym with sauna room, tennis court and squash court with basketball hoop, all kept in excellent condition and only available to residents of the Netanya Building only!

The complex is also sited in an elevated position with some stunning views of Lake Ginninderra and the rising/setting sun. Step out the door, and everything the Belconnen Town Centre has to offer is only a few minutes' walk away.

This is a 3-bedroom ensuite apartment, and it is big, spacious and bright with a north facing aspect. The apartment has had some excellent upgrades making it modern and comfortable. With double secure parking and public transportation less than a block away, you can choose the option that suits you best when going into the Canberra Business District or down south. A job transfer dictates the owner's reluctant sale but that provides



**For Sale**  
\$560,000

**View**  
[ljhooker.com.au/HP07XF8H](http://ljhooker.com.au/HP07XF8H)

**Contact**  
**Robert Murphy**  
0414 734 185  
[rmurphy@ljhbelconnen.com.au](mailto:rmurphy@ljhbelconnen.com.au)

**EER** ★★★★★★



**LJ Hooker Belconnen**  
**(02) 6251 1477**

**Disclaimer:** All information contained therein is gathered from relevant third parties sources. We cannot guarantee or give any warranty about the information provided. Interested parties must rely solely on their own enquiries.

an ideal opportunity to secure one of the best inner city living choices on offer.

Come take a look - Call right now!

Features:

- \* Inner town centre location
- \* Excellent complex amenities - x2 pools. Tennis court, gym, squash/basketball court
- \* Large 3-bedroom, ensuite, double secure parking
- \* Excellent city and water views
- \* Updated kitchen
- \* Reverse Cycle Air Conditioning system
- \* Large balcony
- \* Pet friendly

- Living Size: 110 sqm
- EER 6.0
- Body Corp Fees: \$6,800 p.a.
- Rates: \$1,533 p.a.
- Land Tax: \$1,982 p.a. (investors only)

Disclaimer:

All information contained herein is gathered from external sources we consider to be reliable. However, we cannot guarantee or give any warranty about the information provided. Interested parties must solely rely on their own enquiries and satisfy themselves in all respects.

## More About this Property

<b>Property ID</b>	HP07XF8H
<b>Property Type</b>	Apartment
<b>House Size</b>	110 m2
<b>EER</b>	6

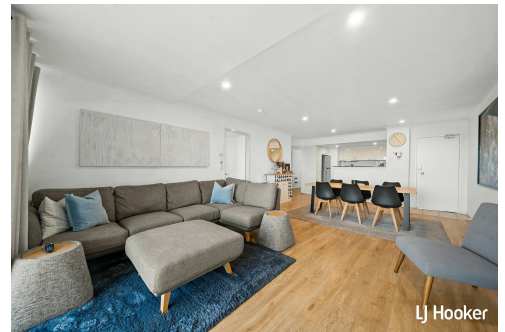
**Robert Murphy 0414 734 185**

Sales Agent | [rmurphy@ljhbelconnen.com.au](mailto:rmurphy@ljhbelconnen.com.au)

**LJ Hooker Belconnen (02) 6251 1477**

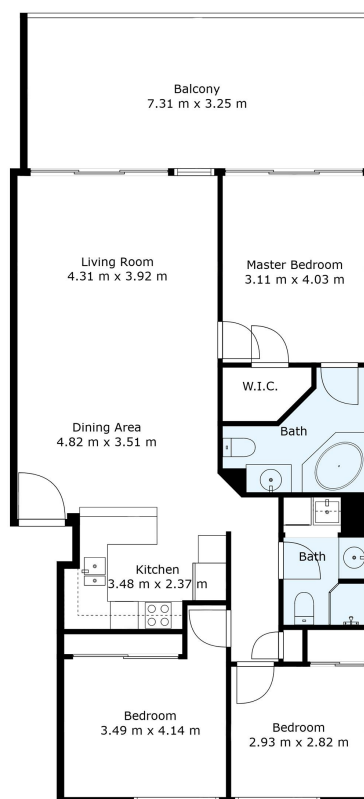
Shop 9, 21 Benjamin Way, BELCONNEN ACT 2617

[belconnen.ljhooker.com.au](http://belconnen.ljhooker.com.au) | [belconnen@ljhbelconnen.com.au](mailto:belconnen@ljhbelconnen.com.au)



**Disclaimer:** All information contained therein is gathered from relevant third parties sources. We cannot guarantee or give any warranty about the information provided. Interested parties must rely solely on their own enquiries.

**LJ Hooker Belconnen  
(02) 6251 1477**


**5/13 Chandler Street, Belconnen**


*Disclaimer: Plans are indicative only and should be checked by the prospective purchaser. Plans shown are for presentation purposes and are not part of any legal document. All measurements and figures are approximate. The information herein is gathered from sources we believe to be reliable.*