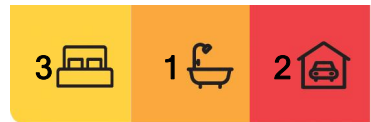




## Bega, 96 High Street

NORTH FACING, GREAT VIEWS

Welcome to 96 High Street, Bega, a beautifully presented full-brick residence with three spacious bedrooms, each featuring built-in wardrobes. This north-facing home offers stunning views over Kisses Lagoon and Mumbulla Mountain, providing a serene backdrop for daily life. The property boasts two inviting living areas, offering ample space for family gatherings or relaxation, along with a well-designed undercover courtyard perfect for entertaining guests. Step into the level, fully fenced backyard, ideal for pets and children, and enjoy the convenience of reverse cycle air-conditioning for year-round comfort. The property includes a double lock-up garage for secure parking and a separate studio, offering versatile space for a home office, creative retreat, or guest accommodation.



**For Sale**  
\$650,000

**View**  
[ljhooker.com.au/NK6FGN](http://ljhooker.com.au/NK6FGN)

**Contact**  
**Tim Shinnick**  
0466 475 131  
[tshinnick@ljhbega.com.au](mailto:tshinnick@ljhbega.com.au)



**LJ Hooker Bega**  
**(02) 6492 4300**

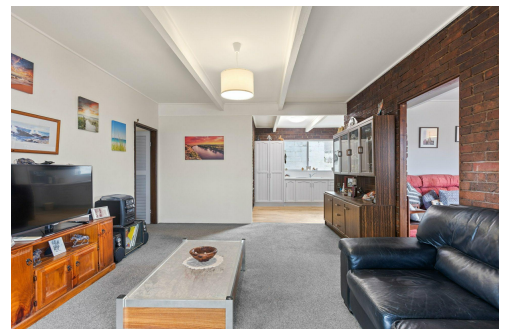
**Disclaimer:** All information contained therein is gathered from relevant third parties sources. We cannot guarantee or give any warranty about the information provided. Interested parties must rely solely on their own enquiries.

## More About this Property

<b>Property ID</b>	NK6FGN
<b>Property Type</b>	House
<b>Land Area</b>	771 m <sup>2</sup>

**Tim Shinnick 0466 475 131**  
Licenced Real Estate Agent | [tshinnick@ljhbega.com.au](mailto:tshinnick@ljhbega.com.au)

**LJ Hooker Bega (02) 6492 4300**  
225 Carp Street, BEGA NSW 2550  
[bega.ljhooker.com.au](http://bega.ljhooker.com.au) | [office@ljhbega.com.au](mailto:office@ljhbega.com.au)



**LJ Hooker Bega**  
**(02) 6492 4300**

**Disclaimer:** All information contained therein is gathered from relevant third parties sources. We cannot guarantee or give any warranty about the information provided. Interested parties must rely solely on their own enquiries.

