



84 Peak Hill Road, Bega

## PRIVATE SETTING - CLOSE TO TOWN




Quietly positioned on an elevated 1.25 acre holding, this private Buckajo home captures expansive views across the Bega Valley while remaining only minutes from the centre of town.

The home features an open-plan design with high timber ceilings, creating a warm, natural atmosphere that blends effortlessly with the surrounding landscape. Two well-proportioned bedrooms each include their own ensuite, while a separate office provides flexibility for working from home or additional living space.

Outdoors is where this property truly shines. Established fruit trees and productive vegetable gardens frame the home, with plenty of room to enjoy the land, entertain or simply take in the outlook. The setting is peaceful, private and wonderfully secluded, yet never isolated.

Water is supplied from the Bega River and supported by rainwater tanks, and a double carport/workshop provides practical undercover parking.

Located just a short drive to Bega - a vibrant regional centre offering

2  2  2 

**FOR SALE**  
\$725,000

### AGENTS

Paul Griffin  
0400 024 300  
pgriffin@ljhbega.com.au

### AGENCY

LJ Hooker Bega  
(02) 6492 4300

All information contained therein is gathered from relevant third parties sources.  
We cannot guarantee or give any warranty about the information provided.  
Interested parties must rely solely on their own enquiries.



quality schools, medical facilities, cafes, shops and strong local employment - this property offers a rare balance of rural privacy and everyday convenience.

An ideal lifestyle property for those seeking space, views and a genuine connection to the land.

## MORE DETAILS

Property ID	P0JFGN
Property Type	House
Land Area	1.25 acre

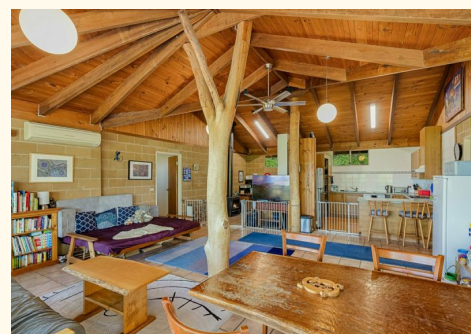
**Paul Griffin 0400 024 300**

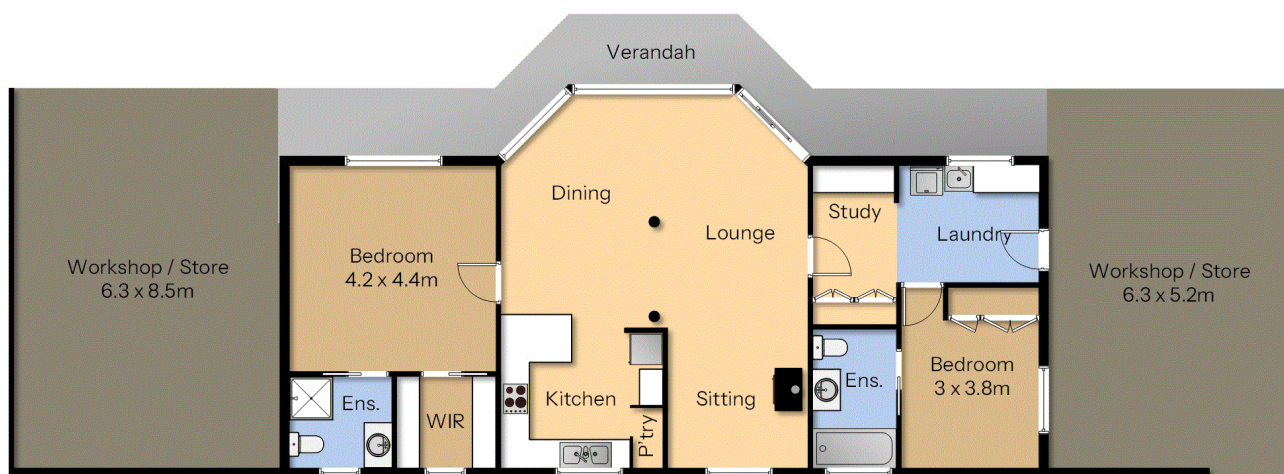
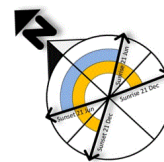
Licensee & Principal | [pgriffin@ljhbega.com.au](mailto:pgriffin@ljhbega.com.au)

**LJ Hooker Bega (02) 6492 4300**

225 Carp Street, BEGA NSW 2550

[bega.ljhooker.com.au](http://bega.ljhooker.com.au) | [office@ljhbega.com.au](mailto:office@ljhbega.com.au)





# 84 Peak Hill Rd, Buckajo

Measurements are approximate and should be used as a guide only.