



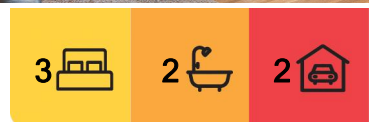
Bega, 573 Coopers Gully Rd

CLOSE TO TOWN

Discover the perfect blend of modern living and natural beauty at 573 Coopers Gully Road, Coopers Gully. This fully renovated three-bedroom family home is set on a 1.25-acre block, offering stunning views of bushland and farmland. The open-plan living area is complemented by a newly crafted kitchen, designed with attention to detail and quality finishes. The home boasts two generous bathrooms, while the main bedroom features a spacious walk-in robe for your convenience.

Relax on the full verandah, taking in the tranquil surroundings, or make use of the double garage for all your storage needs.

Located just a short drive from Bega, you'll have access to a wide range of amenities, including restaurants, cafes, clubs, and hotels. As the regional centre of the area, Bega offers major employment opportunities, top-notch medical facilities, and excellent schools, all within a vibrant community that showcases the best of local hospitality.



For Sale
\$799,000

View
l.jhooker.com.au/NF4FGN

Contact
Paul Griffin
0400 024 300
pgriffin@ljhbega.com.au



Disclaimer: All information contained therein is gathered from relevant third parties sources. We cannot guarantee or give any warranty about the information provided. Interested parties must rely solely on their own enquiries.

LJ Hooker Bega
(02) 6492 4300

This property is a rare find, combining the comfort of a modern home with the serenity of a rural setting.

More About this Property

Property ID	NF4FGN
Property Type	House
Land Area	4927 m ²

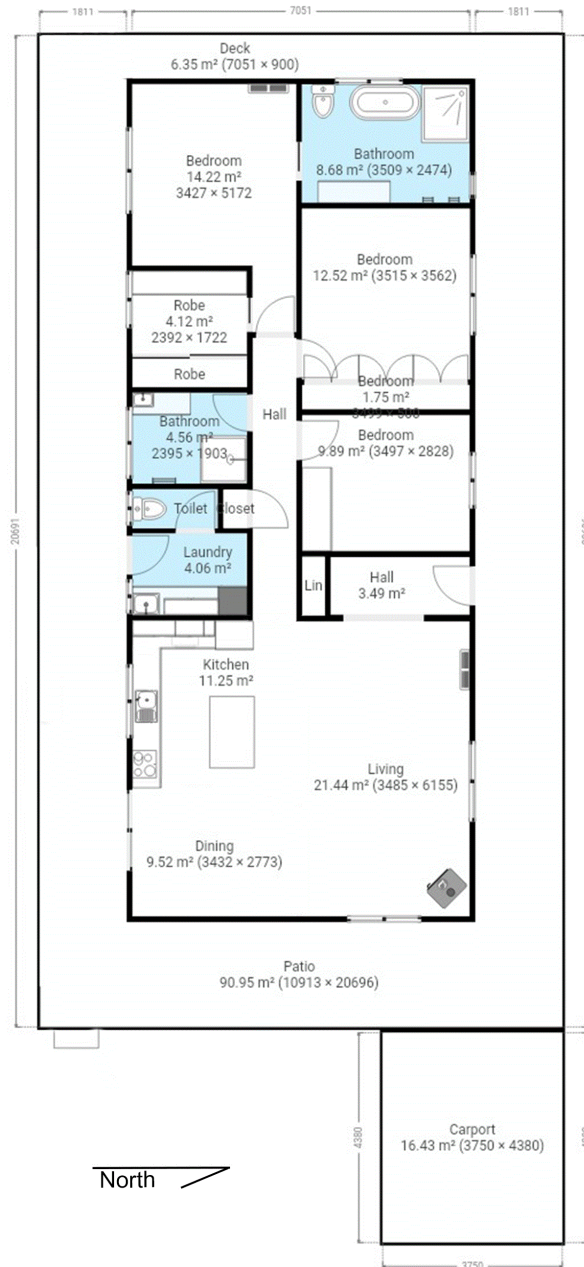
Paul Griffin 0400 024 300
Licensee & Principal | pgriffin@ljhbega.com.au

LJ Hooker Bega (02) 6492 4300
225 Carp Street, BEGA NSW 2550
bega.ljhooker.com.au | office@ljhbega.com.au



LJ Hooker Bega
(02) 6492 4300

Disclaimer: All information contained therein is gathered from relevant third parties sources. We cannot guarantee or give any warranty about the information provided. Interested parties must rely solely on their own enquiries.



This plan is intended for marketing purposes only. All dimensions are approximate.

573 Coopers Gully Road Bega