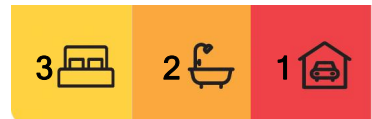




Bega, 31a Sea Lace Place

BRAND NEW, READY TO MOVE IN

Introducing 31A Sea Lace Place, Bega – Your brand-new haven in Bega's Littlewoods Estate! This contemporary 3-bedroom, 2-bathroom home with a single garage boasts open-plan living, an elevated position for excellent views, and a generous backyard perfect for outdoor living. Reverse cycle air-conditioning will ensure comfort all year round. Enjoy the convenience of walking distance to town and the added benefit of close proximity to Bega Hospital. Seize this opportunity for modern living in a prime location.



For Sale
\$725,000

View
By Appointment

Contact
Tim Shinnick
0466 475 131
tshinnick@ljhbega.com.au



LJ Hooker Bega
(02) 6492 4300

Disclaimer: All information contained therein is gathered from relevant third parties sources. We cannot guarantee or give any warranty about the information provided. Interested parties must rely solely on their own enquiries.

More About this Property

Property ID N4SFGN

Property Type House

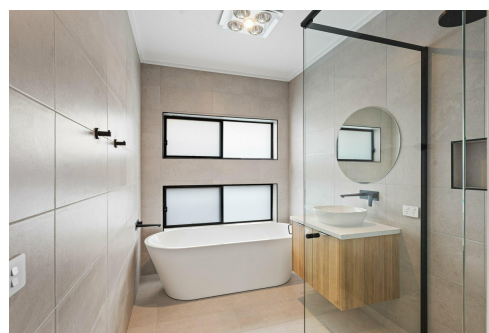
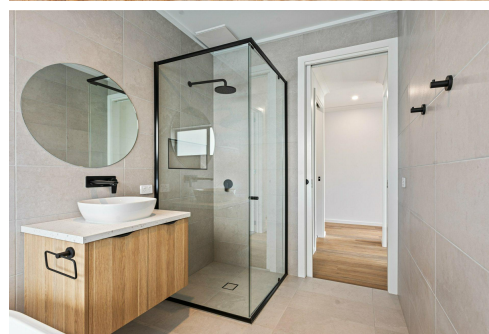
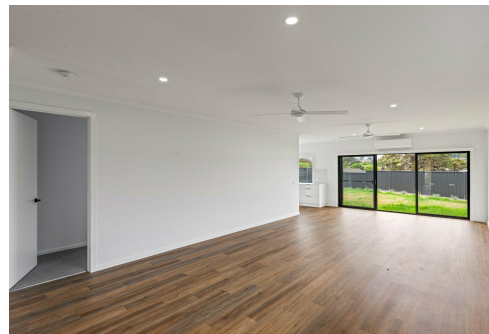
Tim Shinnick 0466 475 131

Licensed Real Estate Agent | tshinnick@ljhbega.com.au

LJ Hooker Bega (02) 6492 4300

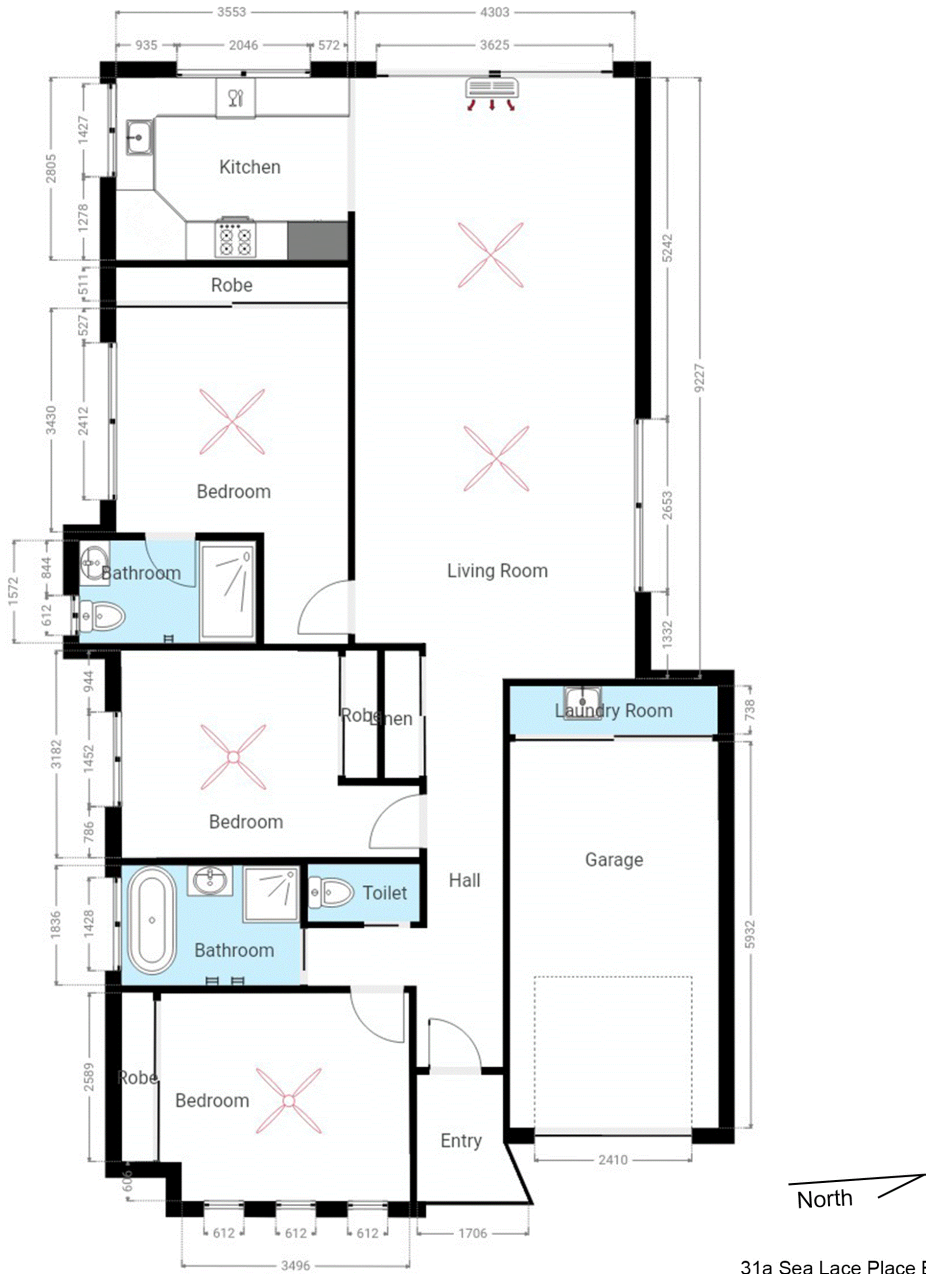
225 Carp Street, BEGA NSW 2550

bega.ljhooker.com.au | office@ljhbega.com.au



LJ Hooker Bega
(02) 6492 4300

Disclaimer: All information contained therein is gathered from relevant third parties sources. We cannot guarantee or give any warranty about the information provided. Interested parties must rely solely on their own enquiries.



31a Sea Lace Place Bega

This plan is intended for marketing purposes only. All dimensions are approximate.