



Bega, 18 Spindler Street

IMMACULATE PRESENTATION

This immaculate 3-bedroom brick family home offers comfort, convenience, and space. Boasting two generous living areas, this residence provides ample room for relaxation and entertainment. The central kitchen is designed for functionality, facilitating seamless meal preparation and dining experiences.

The bedrooms are generously sized, ensuring everyone in the family enjoys their personal space. Step onto the rear deck and experience tranquil moments overlooking the secure rear yard – perfect for outdoor gatherings or simply unwinding after a long day.

Complete with a lock-up garage, this property offers both security and convenience for your vehicles and storage needs. Nestled in a quiet street yet conveniently close to the town centre.

Whether you're a first-time homebuyer or looking to upgrade, 18 Spindler Street presents



Disclaimer: All information contained therein is gathered from relevant third parties sources. We cannot guarantee or give any warranty about the information provided. Interested parties must rely solely on their own enquiries.

3 

1 

1 

For Sale
\$635,000

View
ljhooker.com.au/N9XFGN

Contact
Paul Griffin
0400 024 300
pgriffin@ljhbega.com.au

LJ Hooker Bega
(02) 6492 4300

an ideal opportunity to establish your family in the heart of Bega. Schedule a viewing today to find out more.

More About this Property

Property ID	N9XFGN
Property Type	House
Land Area	645 m ²

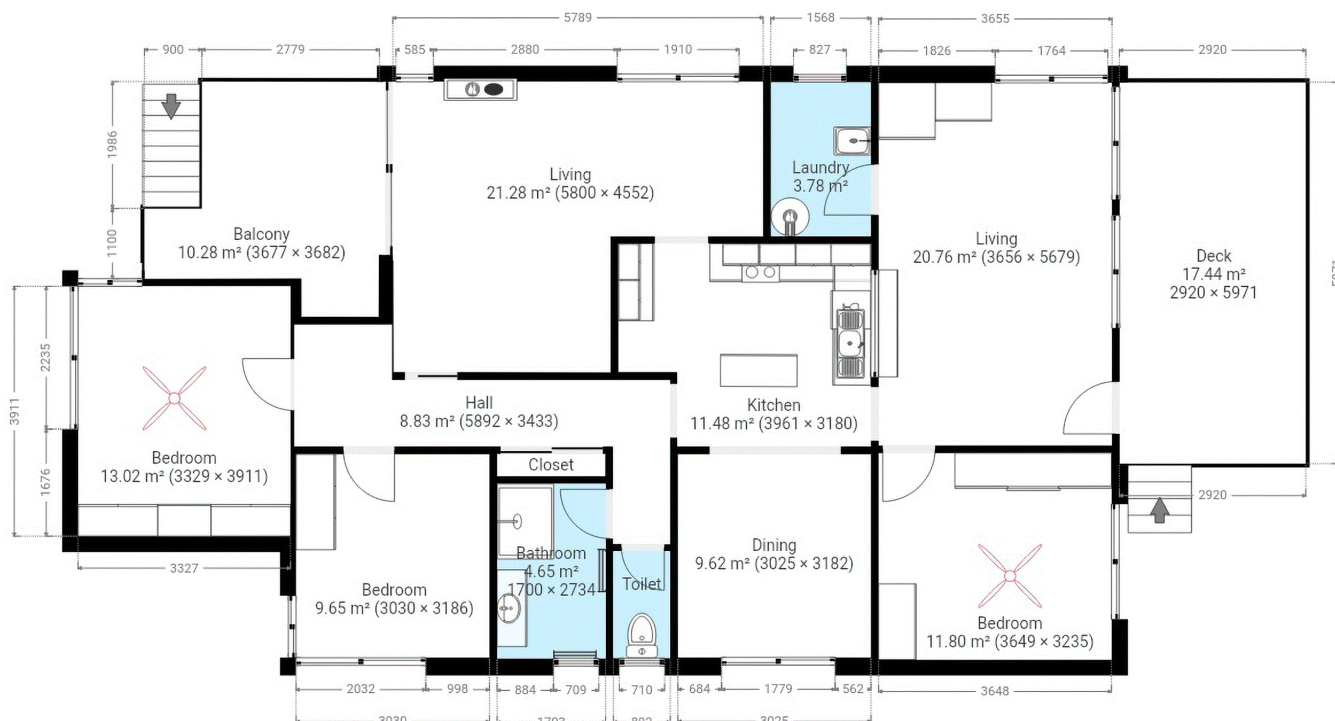
Paul Griffin 0400 024 300
Licensee & Principal | pgriffin@ljhbega.com.au

LJ Hooker Bega (02) 6492 4300
225 Carp Street, BEGA NSW 2550
bega.ljhooker.com.au | office@ljhbega.com.au



Disclaimer: All information contained therein is gathered from relevant third parties sources. We cannot guarantee or give any warranty about the information provided. Interested parties must rely solely on their own enquiries.

LJ Hooker Bega
(02) 6492 4300



This plan is intended for marketing purposes only. All dimensions are approximate.

18 Spindler Street Bega