

14 Wallace Street, Bega


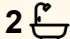

## STUNNING MAKEOVER

This beautifully refreshed 3-bedroom, 2-bathroom home that blends modern comfort with timeless character is a genuine must see. With a recent makeover and stunning hardwood timber floors, this inviting residence offers generous proportions ideal for families, professionals or savvy investors.

Step inside to discover spacious bedrooms, a formal lounge and dining room, and a renovated country-style kitchen that serves as the warm heart of the home. An additional office/sunroom provides the flexibility to work, unwind or enjoy natural light year-round.

Entertaining is effortless with an elevated front deck capturing lovely district outlooks - the perfect spot for morning coffee or evening relaxation.

Set in a convenient and sought-after Bega location, this home delivers comfort, style and practicality in equal measure. A move-in-ready property with nothing left to do but enjoy.

3  2  1 

**FOR SALE**  
\$625,000

### AGENTS

Paul Griffin  
0400 024 300  
pgriffin@ljhbega.com.au

### AGENCY

LJ Hooker Bega  
(02) 6492 4300

All information contained therein is gathered from relevant third parties sources.  
We cannot guarantee or give any warranty about the information provided.  
Interested parties must rely solely on their own enquiries.

 **LJ Hooker**

## MORE DETAILS

Property ID NZNFGN  
Property Type House  
Land Area 550 m<sup>2</sup>

**Paul Griffin 0400 024 300**

Licensee & Principal | [pgriffin@ljhbega.com.au](mailto:pgriffin@ljhbega.com.au)

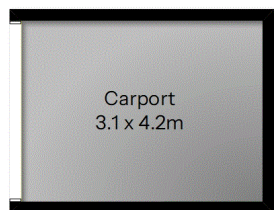
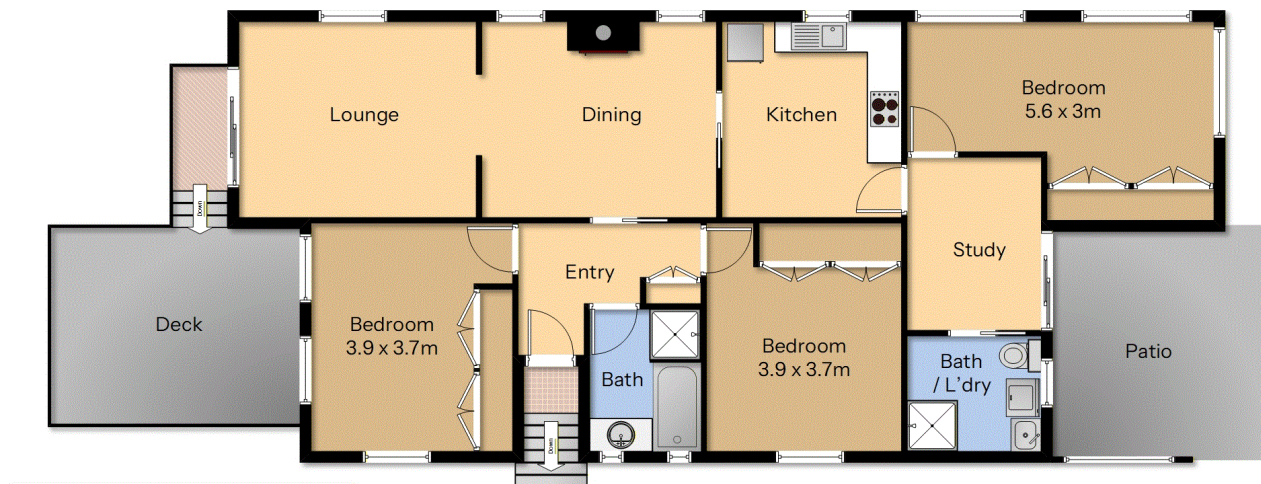
**LJ Hooker Bega (02) 6492 4300**

225 Carp Street, BEGA NSW 2550

[bega.ljhooker.com.au](http://bega.ljhooker.com.au) | [office@ljhbega.com.au](mailto:office@ljhbega.com.au)



All information contained therein is gathered from relevant third parties sources.  
We cannot guarantee or give any warranty about the information provided.  
Interested parties must rely solely on their own enquiries.



# 14 Wallace St Bega



Measurements are approximate and should be used as a guide only.