

38 Stringy Park Close, Bega

SMALL ACRES CLOSE TO TOWN

Set on over two and a quarter acres, 38 Stringy Park Close Bega offers a peaceful rural lifestyle while being centrally located close to town and within easy reach of the golden beaches and estuaries at Tathra. This spacious home features four bedrooms, with the main including an ensuite and walk-in robe, while the remaining bedrooms are complete with built-ins. The open plan dining, lounge, and kitchen area captures a relaxing rural aspect, complemented by a separate media room. Timber floors and reverse cycle air conditioning add to the comfort and appeal. The property includes a double garage with internal access, a 6.9m * 11.7m shed, and a carport. With mains water and power and sealed road frontage, this is an ideal option for those considering a retirement plan in a convenient and scenic location.

4 🚗 2 🚗 4 🚗

FOR SALE
\$1,125,000 - \$1,195,000

AGENTS

Paul Griffin
0400 024 300
pgriffin@ljhbega.com.au

AGENCY

LJ Hooker Bega
(02) 6492 4300

All information contained therein is gathered from relevant third parties sources.
We cannot guarantee or give any warranty about the information provided.
Interested parties must rely solely on their own enquiries.

 **LJ Hooker**

MORE DETAILS

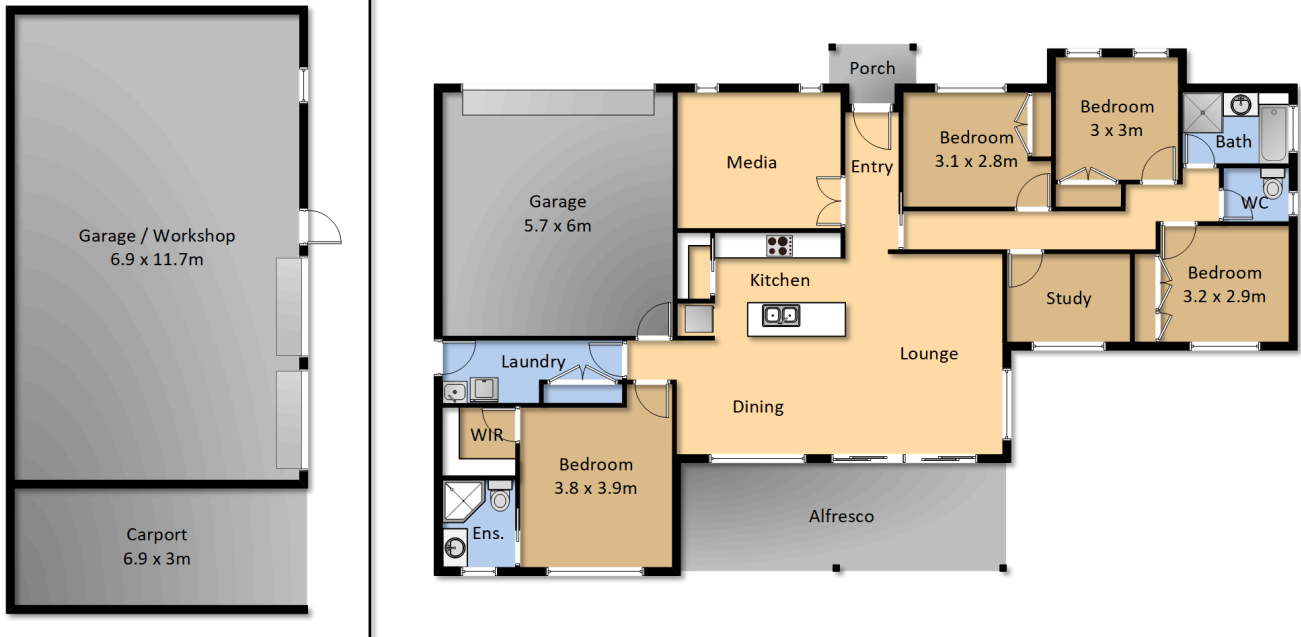
Property ID NV9FGN
Property Type AcreageSemi-rural
Land Area 9622 m2

Paul Griffin 0400 024 300
Licensee & Principal | pgriffin@ljhbega.com.au

LJ Hooker Bega (02) 6492 4300
225 Carp Street, BEGA NSW 2550
bega.ljhooker.com.au | office@ljhbega.com.au



All information contained therein is gathered from relevant third parties sources.
We cannot guarantee or give any warranty about the information provided.
Interested parties must rely solely on their own enquiries.



38 Stringy Park Ct, Bega

Measurements are approximate and should be used as a guide only.

