



18 Wattle Place, Bega

SPACIOUS FAMILY LIVING ON 2.5 ACRES

Set on approximately 2.5 acres and enjoying a peaceful rural outlook, 18 Wattle Place, Bega offers the perfect balance of space, comfort and convenience, just minutes from Bega's township.

This large family home is thoughtfully designed with four bedrooms, two bathrooms and multiple living zones. The main bedroom features a walk-through wardrobe, private ensuite and reverse-cycle air conditioning, while the built-in wardrobes and ceiling fans in the other bedrooms makes the home ideal for family living.

Two generous living areas provide flexibility for growing families, and the home is filled with natural light throughout, with every room enjoying a pleasant rural outlook. The modern kitchen sits at the heart of the home, complete with a breakfast bar and overlooking the dining area and main living space, making it ideal for everyday living and entertaining.

Step outside to a large undercover alfresco area, perfect for outdoor dining, relaxing or hosting family and friends while taking in the surrounding acreage.

4  2  3 

FOR SALE
\$929,000

AGENTS

Stuart Cook
0418 525 192
scook@ljhbega.com.au

AGENCY

LJ Hooker Bega
(02) 6492 4300

All information contained therein is gathered from relevant third parties sources. We cannot guarantee or give any warranty about the information provided. Interested parties must rely solely on their own enquiries.



The property features fully fenced paddocks, town water, and a substantial double bay shed with carport, concrete floor, steel frame and power - ideal for vehicles, storage or workshop use.

Conveniently located just a few minutes from Bega's shops, schools, supermarkets, sports clubs and healthcare facilities, this property offers the space of a rural lifestyle without sacrificing town convenience.

A fantastic opportunity for families seeking room to move in a sought-after Bega location.

For more information or to book your private inspection, call Stuart Cook at LJ Hooker on 0418 525 192 today.

MORE DETAILS

Property ID	P1UFGN
Property Type	AcreageSemi-rural
Land Area	9910 m2

Stuart Cook 0418 525 192

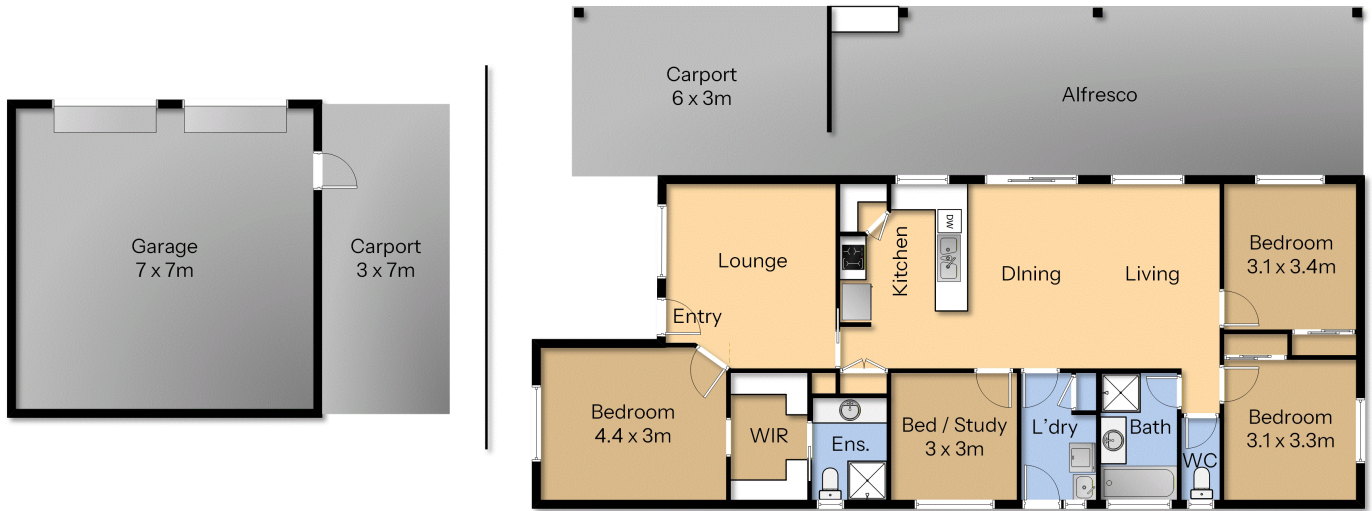
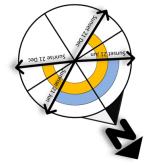
Principal | scook@ljhbega.com.au

LJ Hooker Bega (02) 6492 4300

225 Carp Street, BEGA NSW 2550

bega.ljhooker.com.au | office@ljhbega.com.au





18 Wattle Pl, Bega

Measurements are approximate and should be used as a guide only.

All information contained therein is gathered from relevant third parties sources.
We cannot guarantee or give any warranty about the information provided.
Interested parties must rely solely on their own enquiries.