

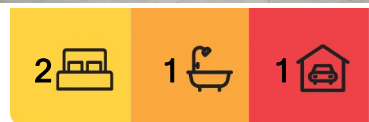
Beenleigh, 3/4 Kokoda Street

SMART START OR SAVVY INVESTMENT

Perfectly positioned for convenience, this refreshed ground-floor 2-bedroom unit is an ideal opportunity for first-home buyers looking for value or investors chasing a solid return. Whether you're stepping into the market or adding to your portfolio, it's a practical choice in a central Beenleigh spot.

Here's a snapshot of what's on offer:

- * Fresh interiors with neutral tones & modern updates - an inviting space to call home
- * Renovated bathroom with sleek shower & practical layout - clean, stylish & easy to maintain
- * Functional kitchen with timber-look benchtop & upright electric oven - practical space for everyday cooking
- * Easy-care tiled floors in high-traffic areas - stress-free maintenance for busy lives
- * Wood-look flooring in both bedrooms - adds warmth
- * Main bedroom with ceiling fan & triple built-in cupboards - plenty of space & a cool



For Sale
Please Call

View
ljhooker.com.au/1WT6GRF

Contact
Trina Wilson
0427 188 500
trina.wilson@ljhbeenleigh.com.au

Fraser Andersen
0413 505 128
sales2@ljhbeenleigh.com.au



Disclaimer: All information contained therein is gathered from relevant third parties sources. We cannot guarantee or give any warranty about the information provided. Interested parties must rely solely on their own enquiries.

LJ Hooker Beenleigh
(07) 3807 7900

breeze for restful nights

- * Second bedroom with built-in wardrobe - perfect for guests, kids or a home office
- * Air-conditioned living room - keeps things comfortable year-round
- * Private internal laundry - tucked away externally for convenience
- * Single carport just steps from your front door - convenience with peace of mind
- * Currently tenanted at \$305/week on a fixed term lease until December 2025 - instant return with stability from day one

Central location with everything close by:

- * 1.4km to Beenleigh State School & 1.6km to Beenleigh State High School
- * Right next to Trinity College & 500m to St Joseph's Tobruk Memorial School
- * 1.4km to Beenleigh Marketplace & town centre
- * 1.4km to Beenleigh Train Station - easy access to Brisbane & the Gold Coast
- * Just 2 mins to the M1 - head north or south with ease

Whether you're starting out or adding to your portfolio, this one is low maintenance & as neat as a pin. Join us at the next open home to see if it's the right fit for you!

More About this Property

Property ID	1WT6GRF
Property Type	Unit
Including	Air Conditioning Built-in-Robes

Trina Wilson 0427 188 500

Sales Manager & Co-Owner | trina.wilson@ljhbeenleigh.com.au

Fraser Andersen 0413 505 128

Licenced Real Estate Agent | sales2@ljhbeenleigh.com.au

LJ Hooker Beenleigh (07) 3807 7900

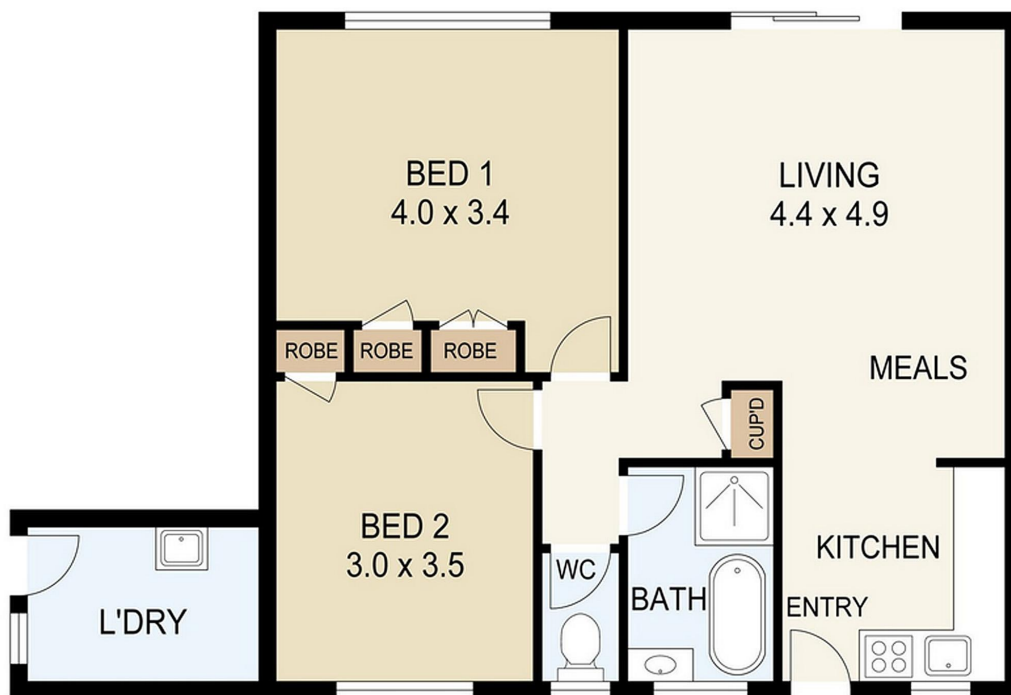
14-16 James Street, BEENLEIGH QLD 4207

beenleigh.ljhooker.com.au | bs0@ljhbeenleigh.com.au



Disclaimer: All information contained therein is gathered from relevant third parties sources. We cannot guarantee or give any warranty about the information provided. Interested parties must rely solely on their own enquiries.

**LJ Hooker Beenleigh
(07) 3807 7900**



Floor Plan

3/4 KOKODA STREET



SCALE UNIT IS IN METRES

All measurements are approximate and for illustration purposes only.
It should not be considered 100% accurate. Interested parties should
rely on their own enquiries.