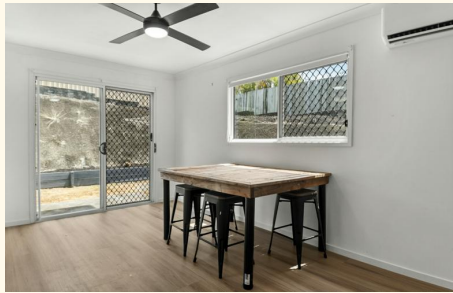




Sold



18/28 Chasley Court, Beenleigh

Move-In Ready & Brimming With Upgrades - This Hamptons-Inspired Townhouse Has It All!

Calling all owner occupiers & investors alike! Properties of this calibre rarely present themselves to the market. Offering an open floor plan, low maintenance living, spacious interiors & a location that ticks every box - this one is simply too good to pass up! Beautifully finished in a fresh Hamptons style, this 3-bedroom townhouse combines charm with modern upgrades. Positioned at the end of a cul-de-sac in a well-maintained complex, all that's left is to move in & enjoy!

Perfect For:

- First home buyers - a beautifully finished first step onto the property ladder!
- Downsizers/retirees - low maintenance, secure & stylish living at its best
- Investors - a turnkey opportunity with great rental returns that just adds up!

Just some of what's on offer:

- 131m2 end-block with a fully fenced yard & beautifully landscaped gardens - perfect for weekend relaxation
- Feels more like a house than a townhouse - finally, the space

All information contained therein is gathered from relevant third parties sources. We cannot guarantee or give any warranty about the information provided. Interested parties must rely solely on their own enquiries.

3 🏠 1 🚿 1 🚗

FOR SALE

Offers Over \$599,000

AGENTS

Trina Wilson

0427 188 500

trina.wilson@ljhbeenleigh.com.au

Kelsey Patterson

0481 711 065

sales6@ljhbeenleigh.com.au

AGENCY

LJ Hooker Beenleigh

(07) 3807 7900



- you've been looking for
- Freshly painted interior & exterior - a crisp, clean finish from the get-go
 - Brand-new wood-look flooring throughout - easy-care style with a warm modern touch
 - Stunning new matte black tapware throughout - luxury touches that elevate everyday living
 - Sleek new black feature ceiling fans in every room - a striking modern addition with year-round comfort
 - Brand-new reverse-cycle air-conditioning in lounge/dining & main bedroom - stay cool & comfortable all summer long
 - Updated, modern kitchen - subway tiled splashback, large pantry & plenty of storage for everyday ease
 - Sliding doors open to your private, low-maintenance courtyard with fresh landscaping & side gate access - relax or entertain in style
 - Single lock-up garage with internal access - convenience & security all in one
 - Downstairs powder room & internal laundry - that added functionality you didn't know you needed
 - Bonus upstairs lounge/study space - ideal for working from home or a second living zone
 - Calm & spacious main bedroom - ceiling fan, walk-in robe, two-way bathroom access & new air-con for total comfort
 - Two additional bedrooms - both with built-ins, roller blinds & filled with natural light
 - Two-way main bathroom - includes shower over bath & separate toilet for added practicality

And the location? Just as impressive! Only 5 minutes to Beenleigh CBD, 5 mins to St Joseph's Tobruk Memorial School, 6 mins to Beenleigh State School & High School, plus just moments to the M1 & Logan Motorway - everything you need is right here!

With nothing left to do but move in, this gorgeous townhouse truly stands out from the rest. Whether you're starting out, slowing down or expanding your investment portfolio, this is one you won't want to miss. Add the next open home to your calendar - opportunities like this don't last long!

MORE DETAILS

Property ID 1X0NGRF
Property Type Townhouse
Land Area 131 m2
Including Air Conditioning
Toilets (2)
Courtyard
Built-in-Robes
Secure Parking
Fully Fenced
Remote Garage
Hamptons style
Updated modern kitchen
tiled downstairs
upstairs loungeroom

Trina Wilson 0427 188 500

Director & Sales Manager | trina.wilson@ljhbeenleigh.com.au

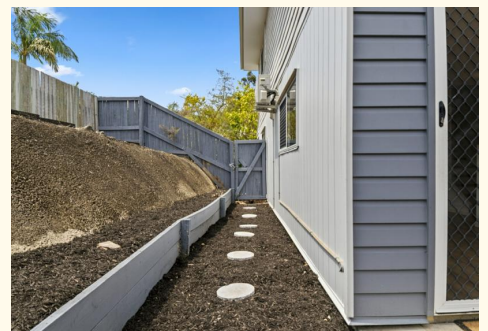
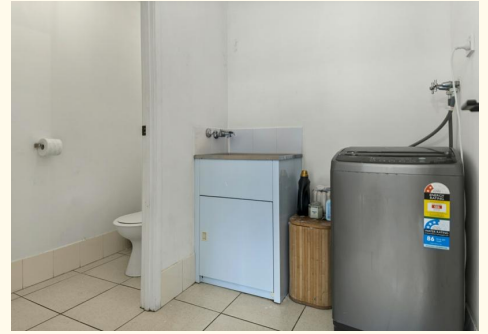
Kelsey Patterson 0481 711 065

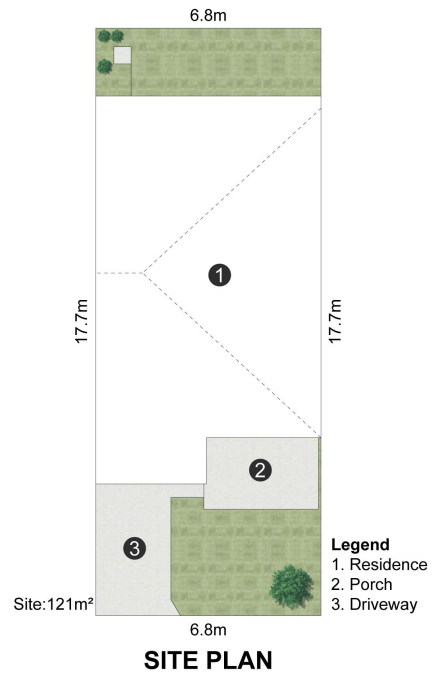
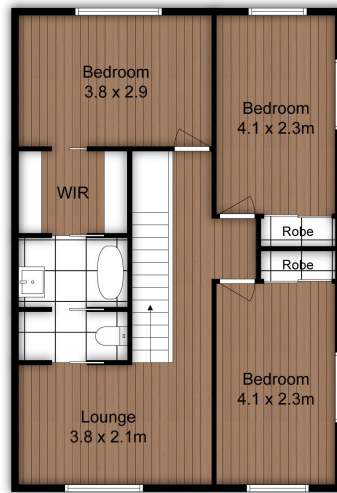
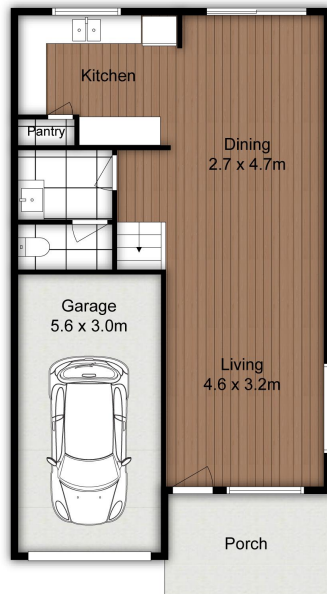
Sales Consultant | sales6@ljhbeenleigh.com.au

LJ Hooker Beenleigh (07) 3807 7900

14-16 James Street, BEENLEIGH QLD 4207

beenleigh.ljhooker.com.au | bs0@ljhbeenleigh.com.au





18/28 CHASLEY COURT FLOOR PLAN

Trina Wilson - 0427188500

3 1 1

Internal: 126m² | External: 7m² | Total: 133m²

Whilst every attempt has been made to ensure the accuracy of the floor plan contained here, measurements of doors, windows, rooms and any other item are approximate and no responsibility is taken for any error, omission, or misstatement. This plan is for illustrative purposes only and should only be used as such by any prospective purchaser.

