



89 Lehmans Road, Beenleigh

The Ultimate Family Upgrade! Multi-Living, Modern & Spacious!

Eileen Chen and Benjamin Waite alongside LJ Hooker Beenleigh are proud to present 89 Lehmans Road, Beenleigh - a home that ticks all the right boxes and then some. Sitting proudly on a generous 771m² block, this beautifully updated property combines modern comforts with practical living, offering plenty of space for families, entertainers, and savvy investors alike. With fresh upgrades, multiple living zones, including a versatile downstairs separate living area, and a backyard made for memory-making, this is a home where lifestyle truly takes centre stage. Offering flexibility for larger families or dual living potential, the home is currently utilised as a five-bedroom residence.

Property Features:

- 5x well-sized bedrooms
- 2x Lower bedrooms below legal height but are currently used as bedrooms*
- Additional versatile spaces allowing the home to be used as a 5-bedroom layout
- Separate downstairs living area ideal for extended family, guests, or a teenage retreat

5 2 2

FOR SALE

MULTI-LIVING WITH A VIEW: MUST-SEE

VIEW

Sat 11th Apr @ 12:00PM - 12:30PM

AGENTS

Eileen Chen
0452 352 547
eileen.chen@ljhbeenleigh.com.au

Benjamin Waite
0431 265 700
benjamin.waite@ljhbeenleigh.com.au

AGENCY

LJ Hooker Beenleigh
(07) 3807 7900

All information contained therein is gathered from relevant third parties sources. We cannot guarantee or give any warranty about the information provided. Interested parties must rely solely on their own enquiries.

LJ Hooker

- 2 modern, stylish bathrooms
- Double lock-up garage providing secure parking
- Expansive 771m²; block offering space and privacy
- Large backyard perfect for kids or pets
- Solar panels for energy efficiency and reduced power bills
- Undercover alfresco area, ideal for entertaining year-round
- Beautiful elevated views to enjoy daily
- Modern, spacious kitchen with ample storage
- Open plan living and dining area filled with natural light
- Split system air conditioning in every bedroom for year-round comfort
- Internal laundry with convenient external access
- Plenty of storage throughout the home
- Recent upgrades including new retaining and fencing, new alfresco ceiling fans and lighting, and freshly painted interiors

Investment Highlights:

- Rental appraisal approximately \$780-\$810 per week
- Strong rental demand in a central Beenleigh location
- Low-maintenance property with recent upgrades completed
- Energy-efficient features appealing to tenants and owners alike
- Positioned in a high-growth corridor between Brisbane and the Gold Coast

Why Beenleigh?

Beenleigh is a suburb on the rise, offering exceptional convenience and connectivity for modern living. With easy access to the M1, commuting to Brisbane or the Gold Coast is a breeze. Local schools, shopping centres, parks, and public transport are all within close reach, making this an ideal location for families and professionals alike. With its blend of lifestyle, affordability, and accessibility, Beenleigh continues to be a smart choice for those looking to call somewhere home.

Important: While every care has been taken in the preparation of the information contained in this marketing, LJ Hooker Beenleigh and its representatives will not be held responsible for any errors or omissions. All details are considered accurate at the time of printing, and interested parties should make and rely on their own enquiries to verify the information.

MORE DETAILS

| | |
|---------------|--------------------|
| Property ID | 1XH8GRF |
| Property Type | House |
| Land Area | 771 m ² |

Eileen Chen 0452 352 547

Sales and Marketing Specialist | eileen.chen@ljhbeenleigh.com.au

Benjamin Waite 0431 265 700

Principal & Licenced Real Estate Agent | benjamin.waite@ljhbeenleigh.com.au

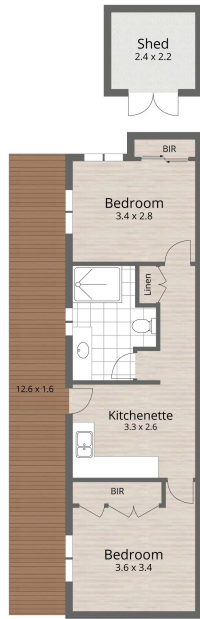
LJ Hooker Beenleigh (07) 3807 7900

14-16 James Street, BEENLEIGH QLD 4207
beenleigh.ljhooker.com.au | bso@ljhbeenleigh.com.au





1st Floor



2nd Floor



SITE PLAN

89 LEHMANS ROAD, BEENLEIGH



5



2



2

141 m²
Internal
65 m²
External

206 m²
Total

EILEEN CHEN - 0452 352 547
BENJAMIN WAITE - 0431 265 700

Whilst every attempt has been made to ensure the accuracy of the floor plan contained here, measurements of doors, windows, rooms and any other item are approximate and no responsibility is taken for any error, omission, or misstatement. This plan is for illustrative purposes only and should only be used as such by any prospective purchaser.