

Sold





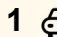
14 Cantwell Place, Beenleigh

## Another one sold by Neil!

This beautifully updated low-set, four-bedroom home ticks all the boxes whether you're a first-home buyer, downsizer, or savvy investor looking for a standout addition to your portfolio. Homes of this calibre are highly sought after - and only one lucky buyer will secure it.

### Property Highlights:

- Renovated low-set rendered brick and tile home - move-in ready with modern finishes
- Light-filled tiled lounge room with air-conditioning, ceiling fan, feature wall and direct access to the expansive entertaining deck
- Handy study nook tucked behind the lounge - ideal for working from home or storage
- Stunning chef's kitchen featuring a mural splashback, 40mm Caesarstone benchtops, stainless steel dishwasher, 5-burner gas cooktop and electric oven - an entertainer's dream
- Separate dining room with pendant lighting, plus a casual meals area off the kitchen
- Four generous bedrooms, each with built-in robes, ceiling fans and downlights
- Beautifully renovated bathroom with feature tiling and a separate toilet
- Sparkling 3-year-old in-ground pool with water feature and deck - ready for summer

4  1  1 

**FOR SALE**  
Contact Agent

### AGENTS

Neil Cowan  
0432 468 439  
ncowan.shailerpark@ljhooker.com.au

### AGENCY

LJ Hooker Shailer Park  
(07) 3102 0829

All information contained therein is gathered from relevant third parties sources.  
We cannot guarantee or give any warranty about the information provided.  
Interested parties must rely solely on their own enquiries.

 **LJ Hooker**

- Multiple outdoor entertaining spaces including a massive deck, concrete alfresco area and front porch
- " 685m<sup>2</sup> fully fenced block with landscaped gardens - perfect for kids and pets
- Single carport plus a large double garden shed, ideal for extra storage and concealing the pool equipment

**Location:**

Set in a highly convenient pocket less than 2km to the M1 - enjoy easy access to both Brisbane and the Gold Coast. Moments from shopping centres, quality schools, childcare, parks, sporting fields and a golf course.

Whether you're downsizing without sacrificing space, searching for your first home, or wanting a strong investment with great rental appeal - this property delivers exceptional value.

Homes like this don't last long. Make sure you're at this weekend's open home - you won't want to miss it!

Disclaimer: We have in preparing this disclosure used our best endeavours to ensure that the information contained herein is true and accurate. No responsibility will be accepted for any and all liability in respect of errors, omissions, Photos, inaccuracies or misstatements. Buyers are responsible to carry out their own research.

**MORE DETAILS**

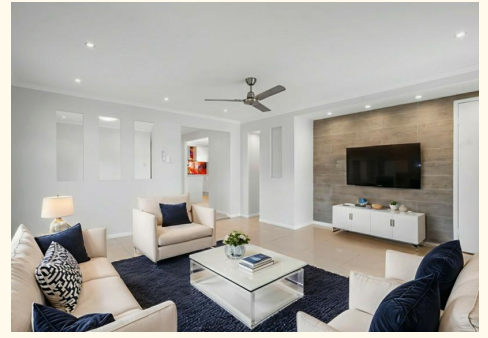
Property ID	69BHVG
Property Type	House
House Size	125 m2
Land Area	685 m2

**Neil Cowan 0432 468 439**

Licensee | [ncowan.shailerpark@ljhooker.com.au](mailto:ncowan.shailerpark@ljhooker.com.au)

**LJ Hooker Shailer Park (07) 3102 0829**

2/3 Mandew Street, SHAILER PARK QLD 4128  
[shailerpark.ljhooker.com.au](http://shailerpark.ljhooker.com.au) | [shailerpark@ljhooker.com.au](mailto:shailerpark@ljhooker.com.au)





14 Cantwell Place **BEENLEIGH**

**LJ Hooker**

 4 | 
  1 | 
  1 | 
  225m<sup>2</sup>

All dimensions are approximate; they are subject to errors and inaccuracies and no liability will be accepted. Plans are shown for marketing purposes only.