



Beechmont, 1-3 Willow Court

Stunning Home, Breathtaking Views & BnB or Dual Living Potential

Experience unforgettable sunrises & sunsets daily as this beautifully presented home captures sweeping views towards the Gold Coast and lush hinterland, best enjoyed from the expansive wraparound verandah, however almost every room overlooks & enjoys these views in some way.

Set on a generous 1581m2 of flat, usable land with two street frontages, this stunning Contemporary Queenslander style home offers the perfect blend for any family of charm, functionality and an elevated lifestyle.

Inside, the main residence boasts four spacious bedrooms, designed for comfort and family living. In addition, a self-contained studio offers a perfect setup for Airbnb hosting, guest accommodation, or genuine dual living - ideal for multi-generational households or an extra income stream.



Disclaimer: All information contained therein is gathered from relevant third parties sources. We cannot guarantee or give any warranty about the information provided. Interested parties must rely solely on their own enquiries.

SOLD

5

3

2

For Sale
\$1,350,000

View
ljhooker.com.au/5GT3F41

Contact
Steve Snow
0414 982 034
ssnow@ljhgc.com.au

LJ Hooker Nerang
(07) 5581 4422

Under the home, you'll find extensive storage space, perfect for a workshop, hobby area or additional recreational gear - all while enjoying the cool breezes and stunning outlook that make this property truly special.

Whether you're relaxing on the verandah, hosting family and friends, or exploring opportunities for lifestyle and income, or maybe enjoying the abundance of visiting birdlife or wallabies this is a home that effortlessly ticks every box.

This unique property offers all of this and so much more!

The home —Upper Level:

- * Spacious open plan living area
- * Versatile kitchen with 6 burner gas cooktop & integrated dishwasher
- * Separate master retreat with built in robe and ensuite
- * 3 Additional family bedrooms
- * Family bathroom
- * Combustion fireplace
- * Air- Conditioning
- * Polished timber flooring
- * Ceiling fans
- * Covered wrap around verandah
- * Prowler proof security screens

Lower Level:

- * Large self-contained studio / home office
- * Laundry
- * Expansive under house vehicle / equipment storage
- * Undercover patio

Additional Features:

- * Stunning views towards Gold Coast and the Hinterland
- * Instant gas water heating
- * Large rainwater tanks
- * Septic system
- * Established fruit trees and gardens
- * Abundance of birds and wildlife
- * Wildlife corridor next to property
- * Separate access for Caravan etc
- * Flat useable 1581m2 block

Appreciate all that is special about Beechmont living with many walking trails & waterfalls in the area, only 10minutes to Binna Burra & the stunning Lamington National Park heritage listed rainforest whilst still being in touching distance of the hustle and bustle and essential services. Enjoy the best of both worlds with this country lifestyle while still being only 30 minutes from Nerang or 20 Minutes to Canungra plus having easy access to the M1, Brisbane and the Gold Coast.

Beechmont is also highly regarded as a warm and welcoming community, with an excellent primary school (only 5 minute's away), playgroups and school transport available.



LJ Hooker Nerang
(07) 5581 4422

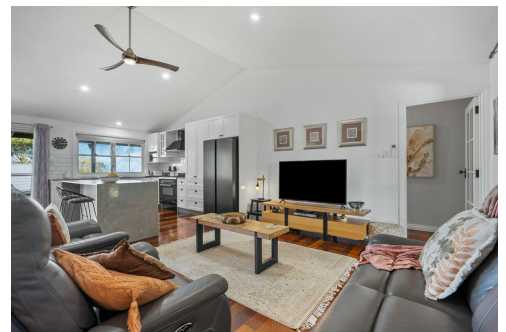
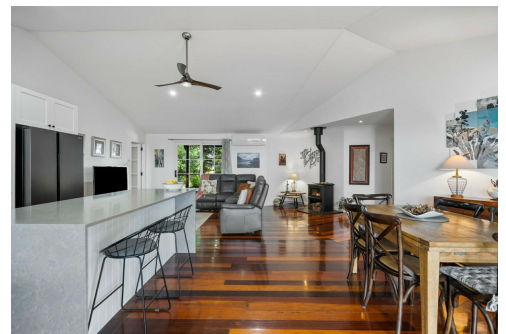
Disclaimer: All information contained therein is gathered from relevant third parties sources. We cannot guarantee or give any warranty about the information provided. Interested parties must rely solely on their own enquiries.

More About this Property

Property ID	5GT3F41
Property Type	House
Land Area	1581 m2
Including	Outdoor Entertaining Built-in-Robes Fully Fenced

Steve Snow 0414 982 034
Sales Specialist | ssnow@ljhgc.com.au

LJ Hooker Nerang (07) 5581 4422
2-4 New Street, NERANG QLD 4211
nerang.ljhooker.com.au | nerang@ljhgc.com.au



LJ Hooker Nerang
(07) 5581 4422

Disclaimer: All information contained therein is gathered from relevant third parties sources. We cannot guarantee or give any warranty about the information provided. Interested parties must rely solely on their own enquiries.



1 Willow Court, Beechmont

Internal: 173m² | External: 113m² | Carport: 57m² | Total: 343m²
Storage: 136m²

*Area shown are only indicative of layout, dimensions are approximate.

