



Beckenham, 14 Wickens Street

SECOND CHANCE!

4 1 1

Nestled on a peaceful street near the tranquil Woodlupine Brook Reserve, this well-positioned family home offers the perfect setting for children to play and pets to roam.

Situated on a generous 684sqm block with a brand-new Colorbond boundary fence at the back of the property, this home is ready for its next owner to move in and enjoy.

** Should you wish to make a non binding offer, please copy and paste this link below into your browser and follow the prompts

<https://prop.ps//oL5mDocFd6Dc>

Currently rented to a lovely tenant - who is on a periodic lease

Features:

* Built in the 1970's



Disclaimer: All information contained therein is gathered from relevant third parties sources. We cannot guarantee or give any warranty about the information provided. Interested parties must rely solely on their own enquiries.

For Sale
From \$599,000

View
ljhooker.com.au/5F8CFFB

Contact
Michael Sheppard
0433 275 080
michael.sheppard@ljhvicpark.com.au

Diane Sheppard
0420 216 066
diane.sheppard@ljhvicpark.com.au

LJ Hooker Victoria Park | Belmont (WA)
(08) 9473 7777

- * Cosy formal lounge with a charming bay window
- * Open-plan kitchen featuring a ceramic cooktop, electric oven, and Bosch dishwasher plus a skylight to enhance and lighten the cooking area
- * Three bedrooms located at the front of the home, with an additional bedroom off the sunken lounge area
- * Spacious sunken family lounge with a wood fire heater
- * Family bathroom with bath, shower, and toilet
- * Separate laundry leading to a covered alfresco area
- * Expansive backyard with a large garden shed
- * Single carport with ample parking behind the secure fence line

Additional Features:

- * Ducted evaporative cooling system
- * Ceiling fan in the main living area
- * Fully enclosed front and back yard

Conveniently located within walking distance to Beckenham IGA and just 2km from Beckenham train station. A short 5-minute drive will take you to Westfield Carousel Shopping Centre, along with numerous shops and dining options along Albany Highway. Positioned in a quiet pocket with Woodlupine Reserve at one end of the street and Beckenham Village Shopping Centre at the other, this home offers both tranquility and convenience.

Council rates PA - +- \$1,900

Water rates PA - \$1,184

More About this Property

Property ID	5F8CFFB
Property Type	House

Michael Sheppard 0433 275 080

Sales Consultant | michael.sheppard@ljhvicpark.com.au

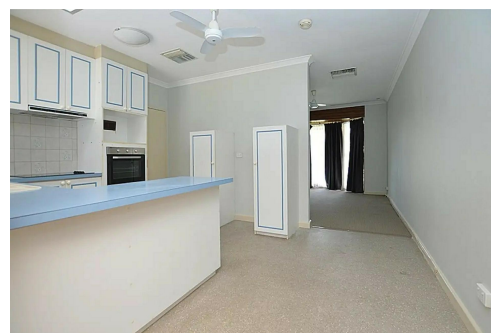
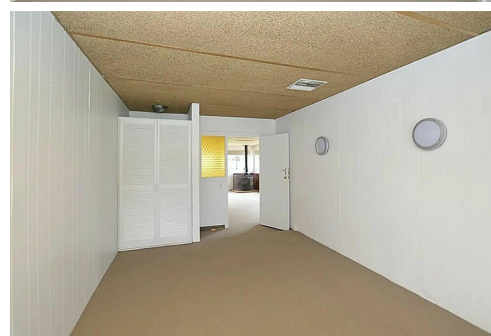
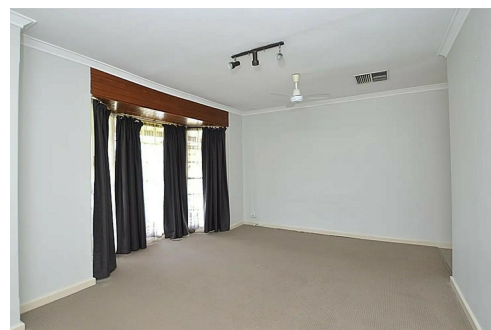
Diane Sheppard 0420 216 066

Real Estate and Business Agent | diane.sheppard@ljhvicpark.com.au

LJ Hooker Victoria Park | Belmont (WA) (08) 9473 7777

288 Albany Highway, VICTORIA PARK WA 6100

victoriapark-belmontwa.ljhooker.com.au | reception@ljhvicpark.com.au



Disclaimer: All information contained therein is gathered from relevant third parties sources. We cannot guarantee or give any warranty about the information provided. Interested parties must rely solely on their own enquiries.

**LJ Hooker Victoria Park | Belmont
(WA)
(08) 9473 7777**