



Bayview, 21/6 Stoddart Drive

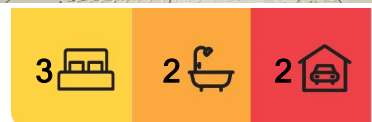
Generous proportions with low maintenance.

Located in the dress circle location of Bayview and situated in a quiet and well maintained complex, this executive property represents exceptional value. Well designed to take advantage of the prevailing breezes, the living and dining areas open onto a large balcony which overlooks the evergreen mangrove forest creating an exceptional sense of privacy. The picturesque city skyline in the background reminds you that despite the tranquillity you are in fact very close to civilization. The master bedroom is also located on the top floor and is a very size with its own ensuite and separate walk in robe.

Both downstairs bedrooms open out via sliding doors into the rear court yard garden and entertaining area, and are conveniently located across from the main bathroom. The lower level also includes the internal laundry which has its own access to the rear yard. There is no lawn to mow, just easy to care for garden beds which means more time to enjoy the space. Undercover parking for 2 cars is included at the front of the property which has easy access to the store room.



Disclaimer: All information contained therein is gathered from relevant third parties sources. We cannot guarantee or give any warranty about the information provided. Interested parties must rely solely on their own enquiries.



For Sale
\$629,000

View
Sat 7th Jun @ 10:30AM - 11:00AM

Contact
Jennifer Wardell
0447 007 474
jwardell@ljhookerdarwin.com.au

Robert Higgins
0418 184 754
rhiggins@ljhookerdarwin.com.au

LJ Hooker Darwin
(08) 8924 0900

Features of the property include:

- * Postcard perfect views from the balcony
- * Fully tiled and air-conditioned through out
- * Open plan living with an excellent flow through design
- * Large kitchen with plenty of bench space
- * Undercover parking for 2 cars plus secure storeroom
- * Oversized main bedroom with Walk-in Robe and ensuite
- * Private, low maintenance court yard
- * Bus stop at the front of the complex
- * Well maintained complex

This property is perfect for the owner occupier looking for a quality low maintenance lifestyle that is close to the amenity of Darwin city and the inner suburbs. Only minutes by car to the Parap markets, Darwin Sailing club and easy access to main road from a trip into Casuarina or out to Palmerston. This home is available now and ready to move straight in, an inspection is a must as this property won't be on the market for long.

Year Built: 2001

Area under title: 293m²

Planning Zone: LMR —Low-Medium Density residential

Council Rates: \$1,800 per year (approx)

Body Corporate Manager: Castle Real Estate

Body Corp Fees: \$1,815 per quarter

Easements: Nil on title

Status: Available now!

More About this Property

Property ID	5D6RF2X
Property Type	Unit
Land Area	293 m2
Including	Ensuite Air Conditioning Dishwasher Built-in-Robes

Jennifer Wardell 0447 007 474

Sales Representative | jwardell@ljhookerdarwin.com.au

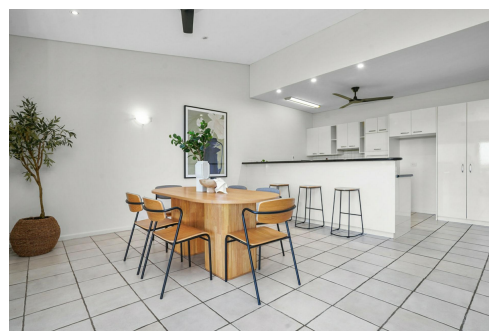
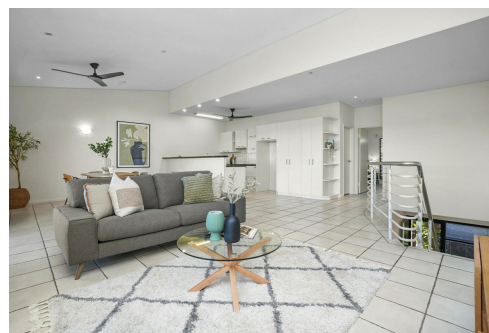
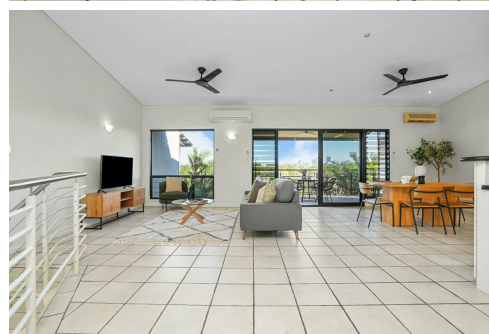
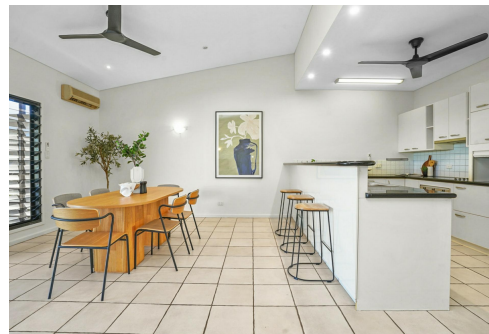
Robert Higgins 0418 184 754

Project Planning and Marketing | rhiggins@ljhookerdarwin.com.au

LJ Hooker Darwin (08) 8924 0900

Shop 1/25 Parap Road, PARAP NT 0820

darwin.ljhooker.com.au | reception@ljhookerdarwin.com.au



Disclaimer: All information contained therein is gathered from relevant third parties sources. We cannot guarantee or give any warranty about the information provided. Interested parties must rely solely on their own enquiries.

LJ Hooker Darwin
(08) 8924 0900



21/6 STODDART DRIVE, BAYVIEW

DISCLAIMER:

PLANS SHOWN ARE FOR MARKETING PURPOSES ONLY. ALL DIMENSIONS ARE APPROXIMATE AND NOT TO SCALE. THEY ARE SUBJECT TO ERRORS AND INACCURACIES AND NO LIABILITY WILL BE ACCEPTED. INTERESTED PARTIES SHOULD MAKE THEIR OWN INQUIRIES.