

## Bayview, 1/21 Fanning Drive

Quality low maintenance duplex.

\* Sold from our extensive data base prior to being advertised.

Located in the dress circle location of Bayview and situated in a quiet and well maintained duplex, this executive property represents exceptional value. Well designed to take advantage of the prevailing breezes, the living and dining areas open onto a large patio which overlooks the small yard and backs onto bush land creating an exceptional sense of privacy. There is a small patch of lawn to mow, and easy to care for garden beds which means more time to enjoy the space. Secure parking is provided by a double garage.

Features of the property include:

- \* Fully tiled and air-conditioned through out
- \* Open plan living with an excellent flow through design
- \* Large kitchen with plenty of bench space



**Disclaimer:** All information contained therein is gathered from relevant third parties sources. We cannot guarantee or give any warranty about the information provided. Interested parties must rely solely on their own enquiries.

**SOLD**

3

2

2

**For Sale**  
\$585,000

**View**  
[ljhooker.com.au/5DBNF2X](http://ljhooker.com.au/5DBNF2X)

**Contact**  
**Jennifer Wardell**  
0447 007 474  
[jwardell@ljhookerdarwin.com.au](mailto:jwardell@ljhookerdarwin.com.au)

**Robert Higgins**  
0418 184 754  
[rhiggins@ljhookerdarwin.com.au](mailto:rhiggins@ljhookerdarwin.com.au)

**LJ Hooker Darwin**  
(08) 8924 0900

- \* Secure parking for 2 cars
- \* Private, low maintenance rear yard
- \* No Body Corporate Management fees.

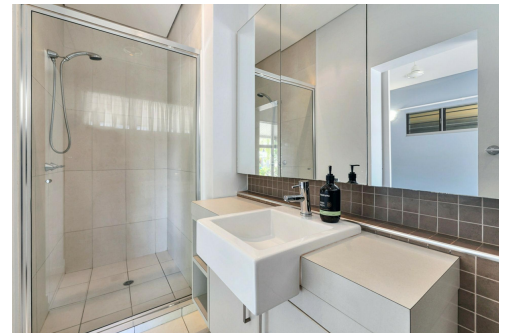
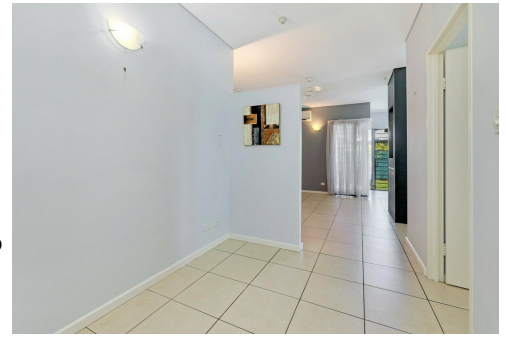
This property is perfect for the owner occupier looking for a quality low maintenance lifestyle that is close to the amenity of Darwin city and the inner suburbs. Only minutes by car to the Parap markets, Darwin Sailing club and easy access to main road from a trip into Casuarina or out to Palmerston.

## More About this Property

<b>Property ID</b>	5DBNF2X
<b>Property Type</b>	Townhouse
<b>Land Area</b>	438 m2
<b>Including</b>	Ensuite Dishwasher

**Jennifer Wardell 0447 007 474**  
 Sales Representative | [jwardell@ljhookerdarwin.com.au](mailto:jwardell@ljhookerdarwin.com.au)  
**Robert Higgins 0418 184 754**  
 Project Planning and Marketing | [rhiggins@ljhookerdarwin.com.au](mailto:rhiggins@ljhookerdarwin.com.au)

**LJ Hooker Darwin (08) 8924 0900**  
 Shop 1/25 Parap Road, PARAP NT 0820  
[darwin.ljhooker.com.au](http://darwin.ljhooker.com.au) | [reception@ljhookerdarwin.com.au](mailto:reception@ljhookerdarwin.com.au)



**LJ Hooker Darwin**  
**(08) 8924 0900**

**Disclaimer:** All information contained therein is gathered from relevant third parties sources. We cannot guarantee or give any warranty about the information provided. Interested parties must rely solely on their own enquiries.



## 1/21 FANNING DRIVE, BAYVIEW

### DISCLAIMER

PLANS SHOWN ARE FOR MARKETING PURPOSES ONLY. ALL DIMENSIONS ARE APPROXIMATE AND NOT TO SCALE. THEY ARE SUBJECT TO ERRORS AND INACCURACIES AND NO LIABILITY WILL BE ACCEPTED. INTERESTED PARTIES SHOULD MAKE THEIR OWN INQUIRES.