
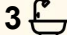
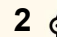


7 Castlemaine Close, Bayview

3  3  2 

## Waterfront Elegance for the Entertainer

This fabulously designed waterfront masterpiece perfectly blends contemporary sophistication with a relaxed coastal lifestyle. From the moment you arrive, the meticulous attention to detail is evident—manicured gardens frame the grand timber door, offering an impressive welcome.

Step inside to a dramatic formal foyer setting the stage for the opulence that unfolds throughout the home. A seamless connection between indoor and outdoor living enhances the sense of space and light, as open-plan interiors flow effortlessly to the expansive outdoor entertaining areas.

Thoughtfully designed for comfort and privacy, each bedroom is a tranquil retreat. The ground floor features a king-sized guest bedroom complete with ensuite, built in robe, and access to the home gym. Upstairs is dedicated to the luxurious master suite and another bedroom with ensuite and private balcony overlooking the resort style pool.

Offering a king-sized bedroom overlooking the stunning marina and spanning most of the upper level is the master suite which screams

**FOR SALE**  
\$2,025,000

### AGENTS

Jasmine Smith  
0438 978 737  
jsmith@ljhookerdarwin.com.au

### AGENCY

LJ Hooker Darwin  
(08) 8924 0900

All information contained therein is gathered from relevant third parties sources.  
We cannot guarantee or give any warranty about the information provided.  
Interested parties must rely solely on their own enquiries.

 **LJ Hooker**

luxury. Upon entry to the main suite, you will pass the walk-in wardrobe to your left and to your right, a resort-style ensuite with twin vanities, a walk-in open shower, and a large spa bath overlooking the private balcony with sweeping views of the waterway and city lights-an indulgent escape you'll never want to leave.

Back on the ground level, relaxed open-plan living centers around a state-of-the-art kitchen featuring premium stainless steel appliances, a gas cooktop, dishwasher, large breakfast bar with wine fridge and soft-close cabinetry-all set within an elegant waterfall benchtop.

Outdoor living is equally impressive. Entertain or unwind beside the grand in-ground resort style pool which wraps around this impressive home, enjoy sunset drinks under the patio, or host gatherings with floor-to-ceiling bi-fold doors which enhance the indoor-outdoor flow and provide excellent cross ventilation throughout this level, ideal for tropical living.

Every detail has been considered to deliver a lifestyle of comfort and prestige. Premium finishes throughout the home, and cutting-edge home automation.

Additional features:

- Double lock-up garage
- Mooring dock for the boat
- Pull-down stairs to attic storage
- Elevated viewing point from the multiple upper-level balconies

This residence is more than a home-it's a statement in luxury waterfront living. To truly appreciate the quality, scale, and lifestyle on offer, an inspection is essential.

## MORE DETAILS

Property ID	5DCEF2X
Property Type	House
Land Area	1120 m2

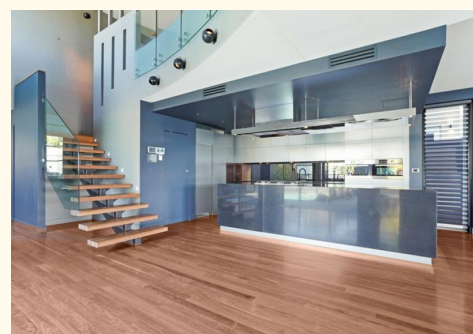
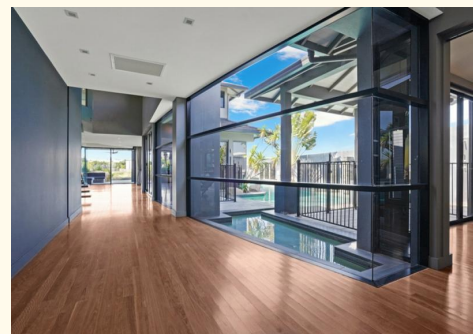
**Jasmine Smith 0438 978 737**

Sales Representative | [jsmith@ljhookerdarwin.com.au](mailto:jsmith@ljhookerdarwin.com.au)

**LJ Hooker Darwin (08) 8924 0900**

Shop 1/25 Parap Road, PARAP NT 0820

[darwin.ljhooker.com.au](http://darwin.ljhooker.com.au) | [reception@ljhookerdarwin.com.au](mailto:reception@ljhookerdarwin.com.au)





## 7 CASTLEMAINE CLOSE, BAYVIEW

### DISCLAIMER

PLANS SHOWN ARE FOR MARKETING PURPOSES ONLY. ALL DIMENSIONS ARE APPROXIMATE AND NOT TO SCALE. THEY ARE SUBJECT TO ERRORS AND INACCURACIES AND NO LIABILITY WILL BE ACCEPTED. INTERESTED PARTIES SHOULD MAKE THEIR OWN INQUIRES.