

9 Lentara Road, Bayview

To Be Sold On or Before Auction

Auction Location: LJ Hooker Avalon Auction Rooms

Positioned high on a secluded ridgeline in Bayview, this extraordinary one-acre estate commands breathtaking panoramic views across Pittwater and out to the Pacific Ocean. Set amidst more than 4,000sqm of pristine bushland, the property delivers a rare combination of absolute privacy, architectural character and exceptional flexibility for large or multigenerational families seeking space to live, gather and retreat in complete comfort.

Hidden within lush native gardens and elevated to capture cooling sea breezes, the residence embraces the timeless principles of classic Sydney School architecture, celebrating natural materials, seamless indoor-outdoor living and a deep connection to the surrounding landscape. Expansive terraces, split-level design and light-filled interiors create a home that feels both grounded in nature and perfectly tailored to modern family life.

Designed with flexibility and separation in mind, the home offers multiple living zones across its split-level layout, making it ideally suited to multigenerational living, extended families, guest accommodation or evolving family needs. Parents, adult children and visiting guests can enjoy their own sense of privacy while remaining

5 🏠 3 🚗 4 🚗

AUCTION

Tue 16th Jun @ 6:00PM

VIEW

Wed 10th Jun @ 4:00PM - 4:30PM

AGENTS

Asha Kerr
0451 635 535
akerr@ljhmv.com.au

AGENCY

LJ Hooker Mona Vale
(02) 9979 8000

All information contained therein is gathered from relevant third parties sources.
We cannot guarantee or give any warranty about the information provided.
Interested parties must rely solely on their own enquiries.

 **LJ Hooker**

connected through generous communal spaces designed for everyday living and entertaining.

At the heart of the home, the centrally positioned kitchen effortlessly services both indoor and outdoor living areas, creating a natural hub for family gatherings, celebrations and relaxed entertaining. Open-plan living and dining spaces spill onto expansive alfresco terraces where sweeping coastal vistas provide an unforgettable backdrop from sunrise through to sunset.

Large windows and sliding glass doors invite natural light into every corner while framing ever-changing outlooks across bushland, Pittwater and the ocean beyond. Privately positioned bedrooms offer peaceful retreats, while the master suite enjoys tranquil greenery and water views that enhance the home's calming atmosphere.

Outdoors, the estate continues to impress with landscaped gardens, expansive entertaining areas and an in-ground pool immersed within the natural surrounds - offering ample room for children to explore, families to come together and future generations to enjoy for years to come.

Thoughtfully enhanced with solar panels and solar hot water, the property also embraces energy-efficient living, complementing its strong connection to the environment while helping reduce ongoing running costs.

The scale of the landholding is increasingly rare within the Northern Beaches. Spanning approximately 4,045sqm, the property offers exceptional privacy and flexibility, with exciting potential to further enhance, extend or reimagine the estate to suit changing family requirements over time.

Despite its peaceful seclusion, the home remains only moments from Bayview's coveted lifestyle attractions, including Pittwater marinas, cafés, village shops, surf beaches, championship golf courses, walking trails and leading schools.

Combining architectural integrity, breathtaking views, remarkable privacy and an adaptable family-focused design, this is a truly unique Northern Beaches offering - perfectly suited to multigenerational living and those seeking a landmark lifestyle estate with enduring long-term appeal.

In conjunction with LJ Hooker Newport - Reade Havenstein 0413 859 742

Disclaimer:

All information contained herewith, including but not limited to the general property description, price and the address, is provided to LJ Hooker Mona Vale by third parties. We have obtained this information from sources we believe to be reliable; however, we cannot guarantee its accuracy. The information contained herewith should not be relied upon and you should make your own enquiries and seek advice in respect of this property or any property on this website.

MORE DETAILS

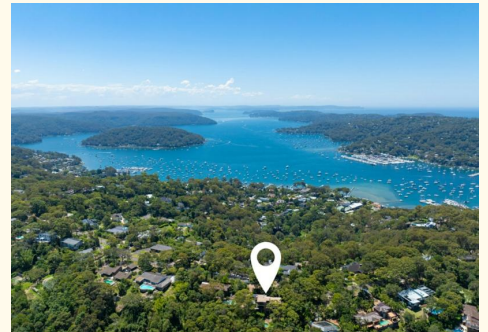
Property ID	2WKCF6K
Property Type	House
House Size	376 m2
Land Area	4047 m2
Including	Pool
	Courtyard
	Deck
	Outdoor Entertaining

Asha Kerr 0451 635 535

Licensed Real Estate Agent | akerr@ljhmv.com.au

LJ Hooker Mona Vale (02) 9979 8000

3/18 Bungan Street, MONA VALE NSW 2103
monavale.ljhooker.com.au | monavale@ljhmv.com.au



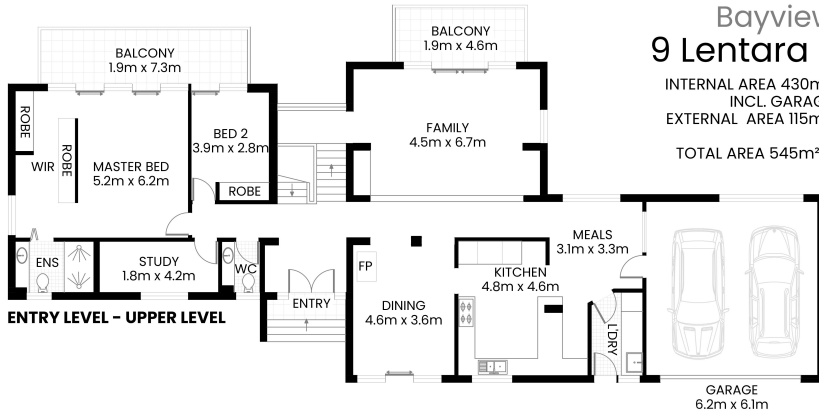
All information contained therein is gathered from relevant third parties sources.
We cannot guarantee or give any warranty about the information provided.
Interested parties must rely solely on their own enquiries.

 **LJ Hooker**

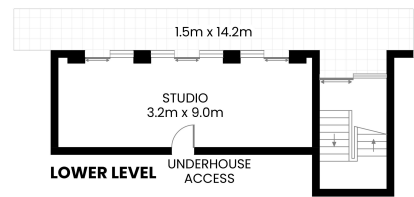
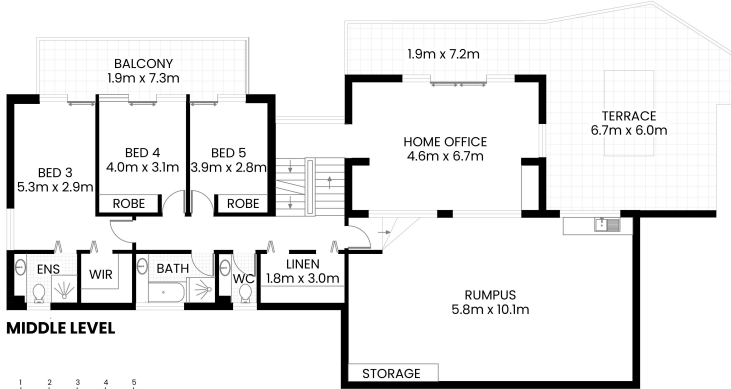
Bayview 9 Lentara Road



INTERNAL AREA 430m² APPROX.
INCL. GARAGE
EXTERNAL AREA 115m² APPROX.
TOTAL AREA 545m² APPROX.



SITE PLAN



LOWER LEVEL

0 1 2 3 4 5 SCALE (METRES)



The site plan and floor plan are not to scale; measurements are indicative and in meters. Bushes and trees are placed for illustration purposes. Plans should not be relied on. Interested parties should make and rely on their own enquiry. All other information provided has been collected from reliable sources but cannot be guaranteed for accuracy.

All information contained therein is gathered from relevant third parties sources.
We cannot guarantee or give any warranty about the information provided.
Interested parties must rely solely on their own enquiries.

