

9 Lentara Road, Bayview

Multigenerational Living - Private Acre Estate

Perched high on a private ridgeline in Bayview, this remarkable one-acre estate captures breathtaking panoramic views stretching across Pittwater to the Pacific Ocean.

Set on more than 4,000sqm of tranquil bushland, the home offers an extraordinary sense of privacy, space and flexibility - perfectly suited to multigenerational living, large families or those seeking separate accommodation for teenagers, grandparents, extended family or guests. Designed to embrace the landscape, expansive terraces and light-filled living spaces create the perfect setting for sunset entertaining overlooking the water.

A rare opportunity to secure a secluded coastal retreat in one of the Northern Beaches' most tightly held lifestyle enclaves. Hidden within lush native gardens and elevated to capture cooling sea breezes and spectacular vistas, the residence reflects the enduring design principles of the classic Sydney School of architecture - celebrating natural materials, indoor-outdoor living and a deep connection with the surrounding landscape.

Thoughtfully designed across multiple split levels, the flexible floorplan offers excellent separation between living zones and bedroom accommodation, creating privacy and independence for teenagers, grandparents or extended family while still maintaining a strong sense

5 🏠 3 🚗 4 🚗

AUCTION

Tue 16th Jun @ 6:00PM

VIEW

Sat 13th Jun @ 10:45AM - 11:30AM

AGENTS

Reade Havenstein
0413 859 742
rhavenstein@ljhnewport.com.au

AGENCY

LJ Hooker Newport
(02) 9979 1111

All information contained therein is gathered from relevant third parties sources.
We cannot guarantee or give any warranty about the information provided.
Interested parties must rely solely on their own enquiries.

 LJ Hooker

of connection throughout the home.

Generous open-plan living and dining areas flow effortlessly to expansive decks and outdoor entertaining zones, where the sweeping coastal panorama forms a dramatic backdrop to everyday life. Large windows and sliding doors invite the outdoors in, filling the interiors with natural light and framing ever-changing views across the water and surrounding bushland.

The kitchen sits at the heart of the home, perfectly positioned to serve both indoor living spaces and outdoor entertaining areas - ideal for relaxed family living, multigenerational households or hosting memorable gatherings with friends as the sun sets over Pittwater. Privately positioned bedrooms provide peaceful retreats, while the master suite enjoys a tranquil outlook over the surrounding greenery and distant water views. The home's versatile configuration also presents the opportunity for dedicated guest accommodation, dual living arrangements or work-from-home flexibility.

The property has also been thoughtfully enhanced with energy-efficient features, including solar panels and solar hot water, helping reduce running costs while supporting a more sustainable lifestyle - perfectly suited to the home's connection with its natural environment. Beyond the home itself, the expansive landholding offers a rare sense of scale and privacy seldom found so close to the coast. With approximately 4,047sqm of land, the property provides endless possibilities to enhance, extend or simply enjoy the serenity of this extraordinary natural setting.

Despite its peaceful seclusion, the property is only minutes from the lifestyle attractions that make Bayview so sought after - including Pittwater's sailing and boating culture, nearby surf beaches, championship golf courses, walking trails and vibrant village cafés. Importantly, the property also represents exceptional value in today's Northern Beaches market. Opportunities to secure an estate-scale holding of this size - with sweeping water views, privacy, flexible family accommodation, sustainable energy features and extensive outdoor entertaining spaces - are increasingly rare, making this a compelling proposition for buyers seeking both lifestyle and long-term potential. Combining space, privacy, breathtaking views, architectural character and exceptional flexibility for multigenerational living, this is a truly rare opportunity to secure a landmark Northern Beaches property offering immediate lifestyle appeal and outstanding future potential.

Key Features:

- 1970s split-level residence in the Sydney School architectural style
- Panoramic ocean, coastline and city views to Bondi Junction
- Approx. 4,047sqm parcel offering privacy and elevation
- Flexible floorplan ideal for multigenerational and intergenerational living
- Excellent separation between living zones and bedroom accommodation
- Multiple living areas ideal for large or extended families
- Warm natural materials including brick and timber throughout
- Landscaped gardens, alfresco entertaining and in-ground pool
- " Peaceful elevated position capturing breezes and changing light
- " Close to Pittwater marinas, cafés, beaches, schools and shops

In conjunction with LJ Hooker Mona Vale Asha Kerr - 0451 635 535

Disclaimer:

All information contained herewith, including but not limited to the general property description, price and the address, is provided to LJ Hooker Newport by third parties. We have obtained this information from sources we believe to be reliable; however, we cannot guarantee its accuracy. The information contained herewith should not be relied upon and you should make your own enquiries and seek advice in respect of this property or any property on this website.

MORE DETAILS

Property ID	1AZFG5W
Property Type	House
House Size	376 m2
Land Area Including	4047 m2
	Pool
	Deck
	Outdoor Entertaining

Reade Havenstein 0413 859 742
Sales Executive | rhavenstein@ljhnewport.com.au

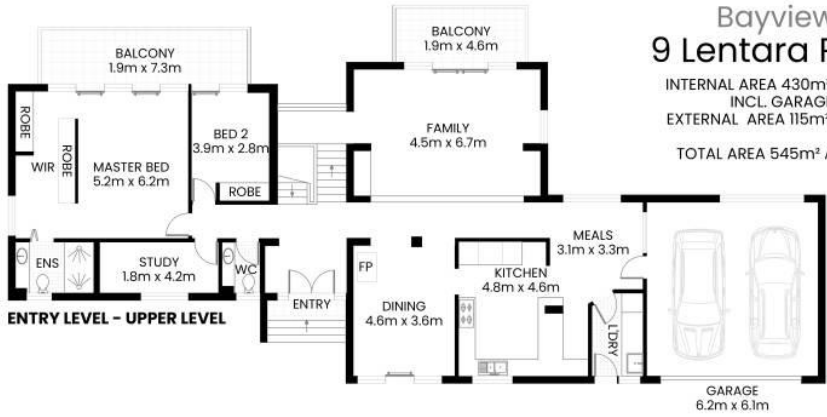
LJ Hooker Newport (02) 9979 1111
303 Barrenjoey Road, NEWPORT NSW 2106
newport.ljhooker.com.au | newport@ljhnewport.com.au



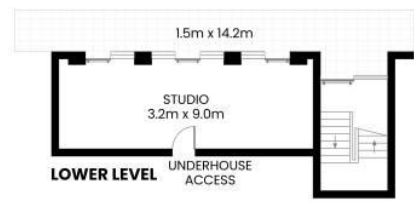
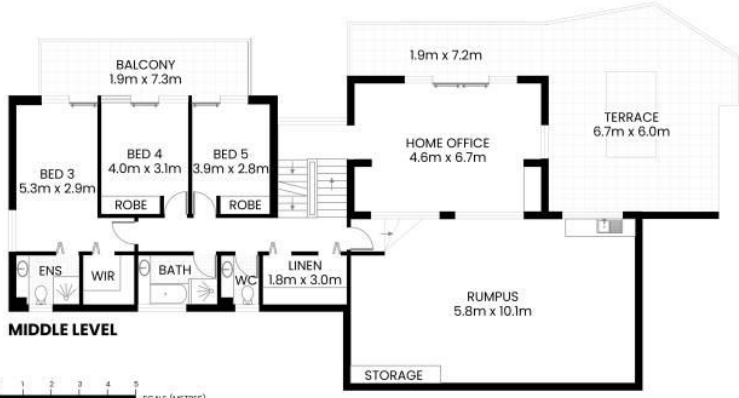
All information contained therein is gathered from relevant third parties sources.
We cannot guarantee or give any warranty about the information provided.
Interested parties must rely solely on their own enquiries.

Bayview 9 Lentara Road

INTERNAL AREA 430m² APPROX.
INCL. GARAGE
EXTERNAL AREA 115m² APPROX.
TOTAL AREA 545m² APPROX.



SITE PLAN



LOWER LEVEL



The site plan and floor plan are not to scale; measurements are indicative and in meters. Bushes and trees are placed for illustration purposes. Plans should not be relied on. Interested parties should make and rely on their own enquire. All other information provided has been collected from reliable sources but cannot be guaranteed for accuracy.

All information contained therein is gathered from relevant third parties sources. We cannot guarantee or give any warranty about the information provided. Interested parties must rely solely on their own enquiries.

